

WORKFLOW DIAGRAMS

- | | | |
|----------|--|------------|
| Figure 1 | Non-DBE's
Subcontractors, Suppliers and Service Providers
(including Trucking and Owner Operators) | Page 1 - 2 |
| Figure 2 | DBE's
Subcontractors, Suppliers and Service Providers
(including Trucking and Owner Operators) | Page 1 - 3 |

Notes:

B2GNow - Reporting software, provided by the Nevada Department of Transportation, to maintain a record of a contract, including the reporting of payments to all subcontractors, service providers and DBE suppliers, recorded by the 15th of each month (see Chapter 5, B2GNow, for specific requirements).

DBE - Disadvantage Business Enterprise.

Hauling Agreement - required for all DBE trucking entities including owner/operator trucking entities (see Chapter 9, Trucking, for specific requirements).

Subcontract Agreement - required for each subcontractor prior to working on the project (see Chapter 3, Subcontract Agreement, for specific requirements).

LCPtracker - Payroll tracking system used by the Nevada Department of Transportation to track weekly payroll to facilitate the submission of weekly payroll reports and payments (see Chapter 6, LCPtracker, for specific requirements).

RTS - Request to Sublet (see Chapter 2, Request to Sublet, for specific requirements).

RTUSP - Request to Utilize Service Provider (see Chapter 4, Request to Utilize Service Provider, for specific requirements).

Non-DBE Subcontractors, Suppliers and Service Providers

Rev. 01/17

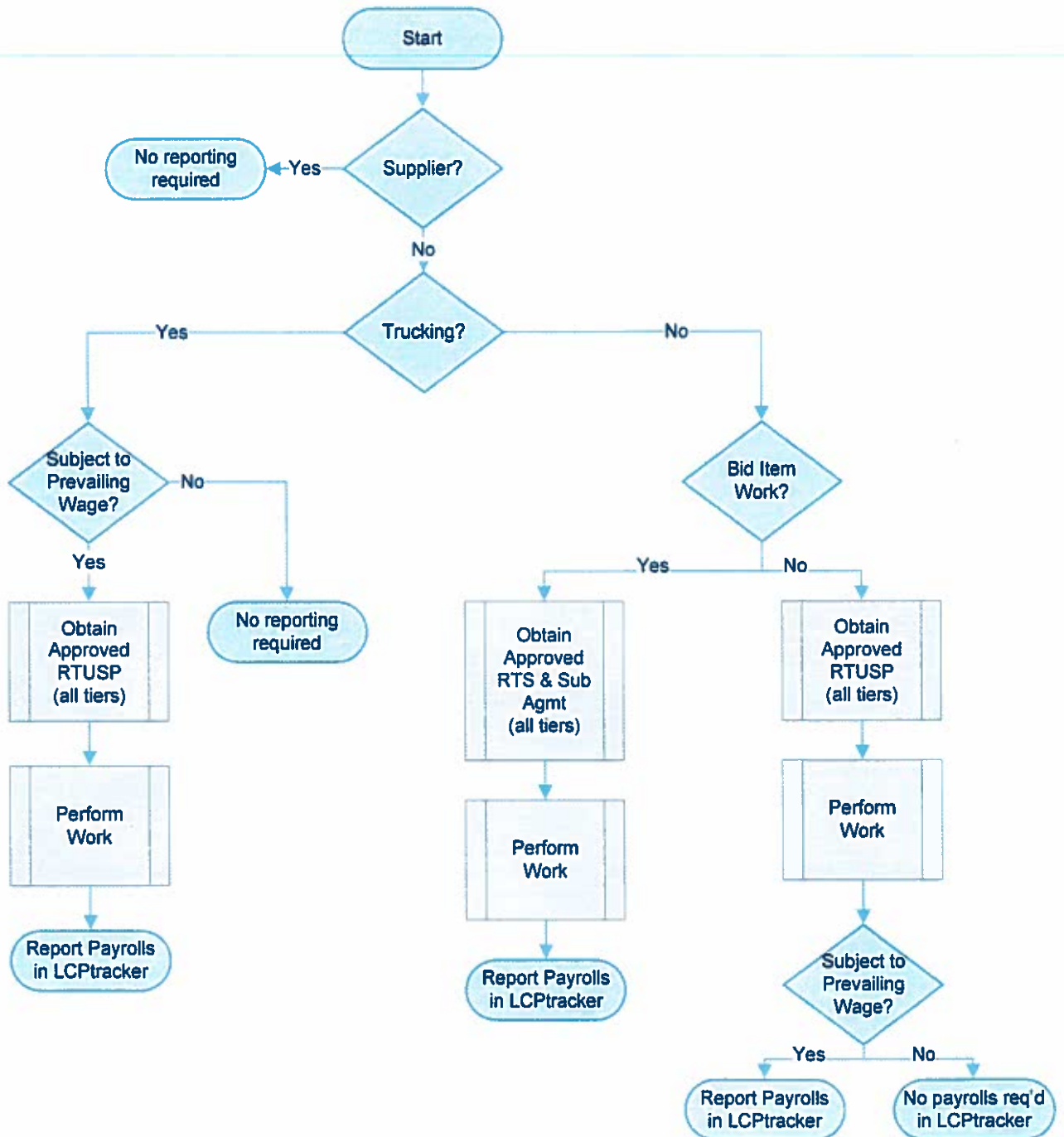


Figure 1 – Non-DBE Subcontractors, Suppliers and Service Providers

DBE Subcontractors, Suppliers and Service Providers

Rev. 01/17

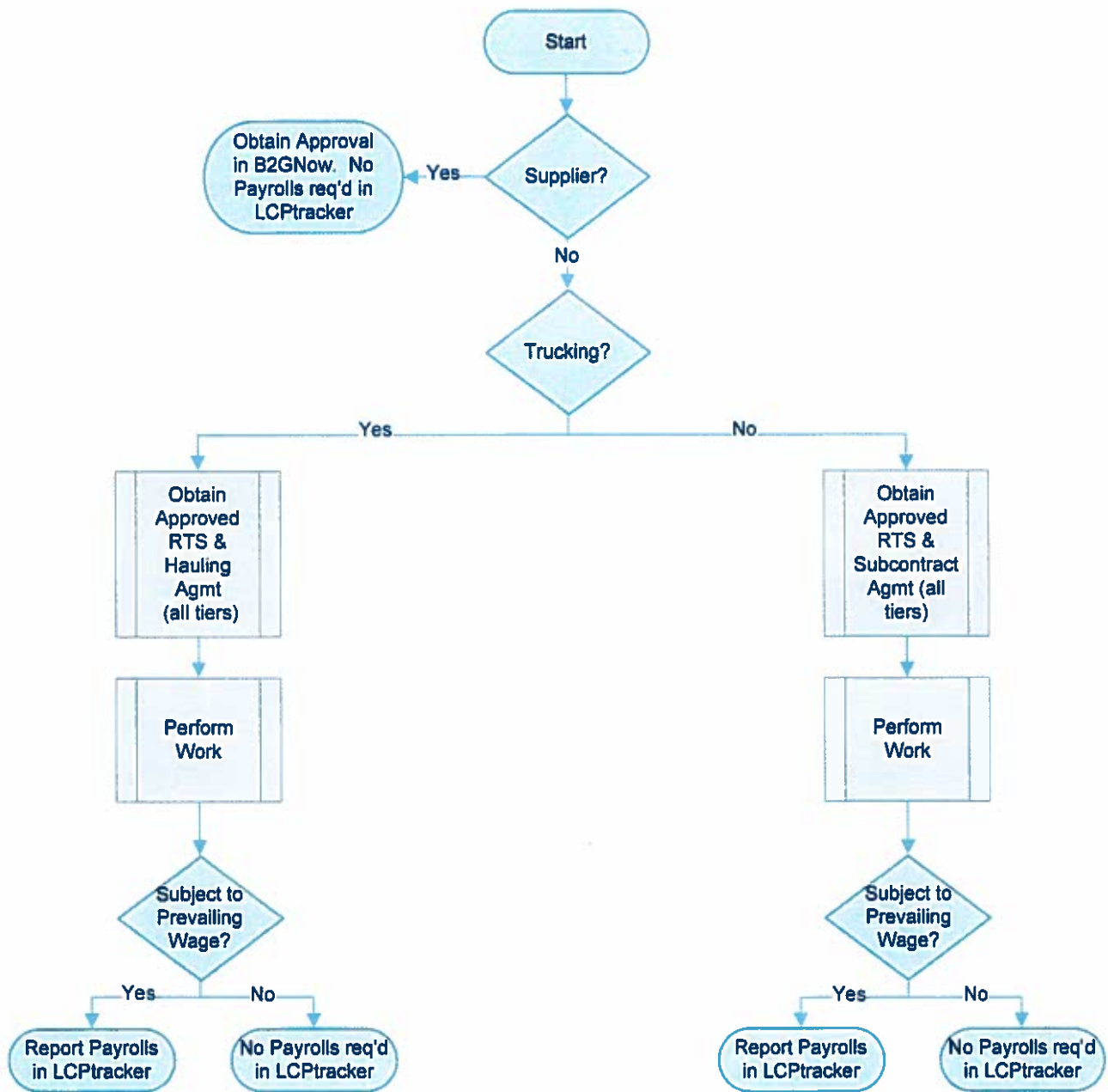


Figure 2 – DBE Subcontractors, Suppliers and Service Providers