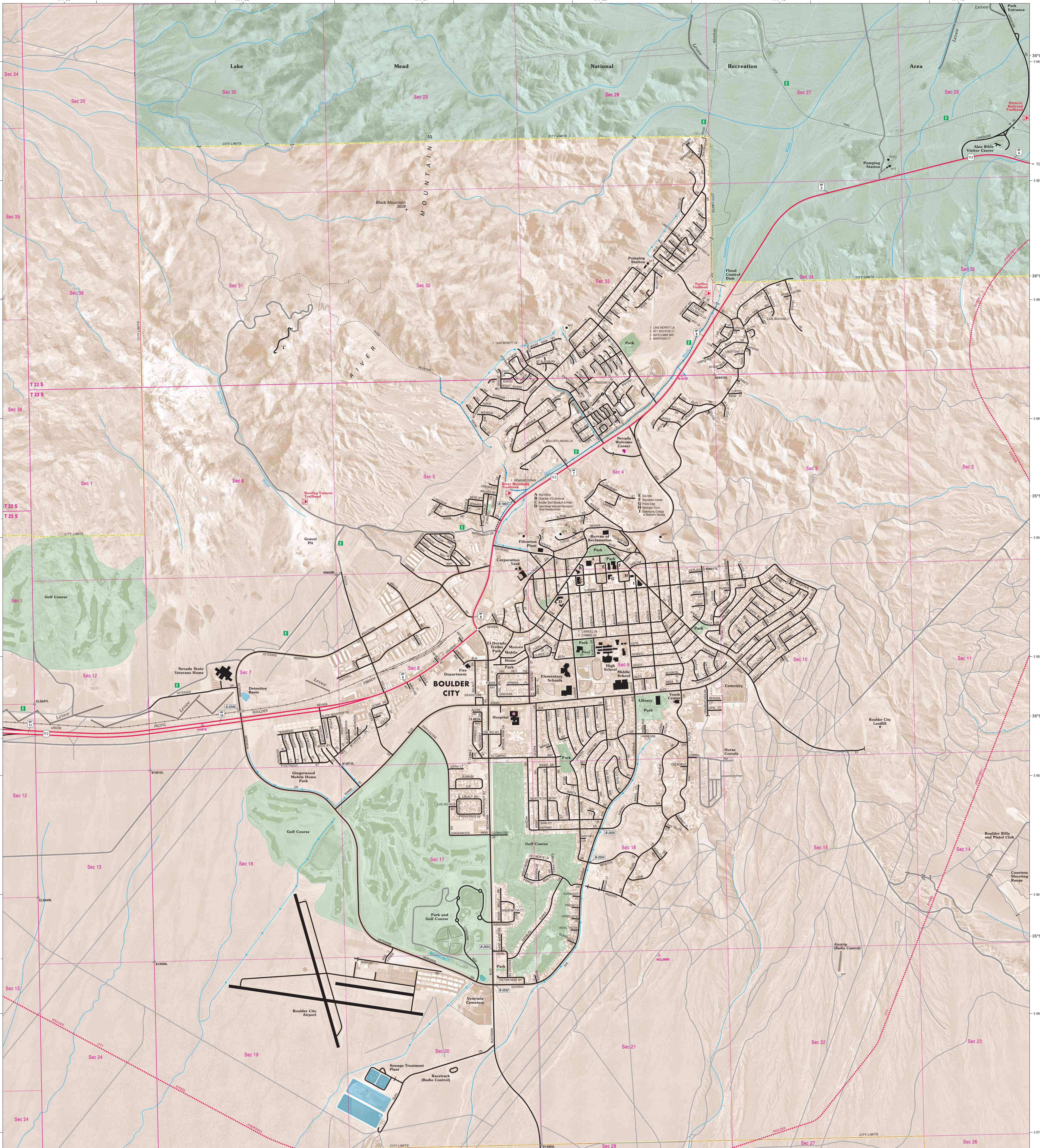


R 63 E R 63 1/2 E R 64 E 114°53' 114°52' 114°51' 114°50' 114°49' 114°48'



R 63 E R 63 1/2 E R 64 E 114°53' 114°52' 114°51' 114°50' 114°49' 114°48'

**BOULDER CITY AREA
2006**

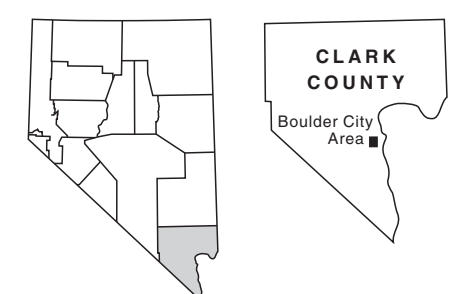
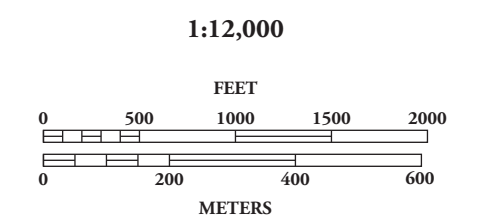
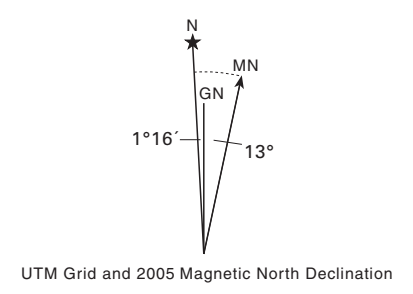
Population* 15,058
Mean Elevation 2400'
*2004 Nevada State Demographer

Transverse Mercator Projection 1983
Mount Diablo Base and Meridian
1,000 Meter Universal Transverse
Mercator Grid Zone 11
North American Datum 1983

Horizontal and vertical control data on
file at Carson City, Nevada

Copyright © 2006
Nevada Department of Transportation
Photography not to scale
Photography date: 2004

- Freeway, Federal
- Highway, Federal
- Highway, State
- Other Paved Road
- Improved Surface
- Unimproved
- Interchange Number
- Interstate Milepost Marker
- Interstate Milepost Marker (By County)
- US or State Route Milepost Marker (By County)
- NDOT Bridge Number
- Nevada Historical Marker



Prepared by and for sale at:
NEVADA DEPARTMENT OF TRANSPORTATION
Location Division, Cartography Section
1260 South Stewart Street, Room 206
Carson City, Nevada 89712

In cooperation with the
U.S. Department of Transportation
Federal Highway Administration