

# VEHICLES

This section presents a series of data displays, which identify types of vehicles involved in collisions and specific motorcycle collision information.

## 2006 SUMMARY ANALYSIS

- ◆ The standard passenger car was involved in more collisions than any other type of vehicle in 2006. Of the other identified vehicles, pick-up trucks and Sport Utility Vehicles ranked number 2 and 3 respectively. There were 2,135 unknown type vehicles involved in crashes. Passenger cars were involved in more roll-over collisions than SUV's.



- ◆ The number of motorcycle fatal collisions decreased in 2006 to 46 from 54 in 2005. There were 47 in 2004, (these numbers do not include "moped" fatal collisions).

- ◆ The counties with motorcycle fatalities in 2006 were Clark with 33, Washoe with 7, Nye with 3, Churchill, Douglas, and Lyon all with 1.



- ◆ Emergency vehicles were involved in 21 collisions during the course of emergency response



- ◆ Total number of large trucks involved in collisions was 2,619 which represent 2.28% of all vehicles.



**TYPES OF VEHICLES INVOLVED IN ALL PROPERTY DAMAGE,  
INJURY AND FATAL COLLISIONS\***

<b>Vehicle Type</b>	<b>TOTAL VEHICLES</b>	<b>VEHICLES IN PROPERTY DAMAGE CRASHES</b>	<b>VEHICLES IN INJURY CRASHES</b>	<b>VEHICLES IN FATAL CRASHES</b>
SEDAN- 4 DOOR	39173	25041	13988	144
PICKUP	20488	13756	6619	113
SUV	16650	10875	5689	86
SEDAN- 2 DOOR	9327	5988	3289	50
VAN	6815	4420	2371	24
HARDTOP- 4 DOOR	4050	2308	1734	8
UTILITY	2913	1887	1019	7
UNKNOWN	2135	1581	539	15
HATCHBACK- 2 DOOR	1652	1014	630	8
TRACTOR TRUCK DIESEL	1385	1070	291	24
HARDTOP- 2 DOOR	1309	794	507	8
MOTORCYCLE	1178	202	930	46
HATCHBACK- 4 DOOR	1096	701	390	5
STATION WAGON	1093	672	416	5
CONVERTIBLE	1043	685	350	8
SEDAN	989	714	274	1
SEMI	873	697	170	6
BUS	802	581	219	2
TRACTOR TRUCK GASOLINE	309	249	57	3
DUMP	217	166	51	
MOTORIZED HOME	162	140	19	3
LIMOUSINE	160	118	42	
TOW TRUCK/WRECKER	126	95	30	1
MOPED	103	10	90	3
BOX TRUCK	74	49	25	
COUPE	70	48	22	
TRACTOR TRUCK	51	39	11	1
TANKER	50	36	13	1
FLATBED OR PLATFORM	44	33	10	1
REFRIGERATED VAN	44	29	15	
LIFT BOOM	34	29	5	
CONCRETE MIXER	24	18	6	
CONSTRUCTION VEHICLE	24	15	9	
MULTI WHEEL	15	4	11	
AMBULANCE	13	8	5	
AUTO CARRIER	12	8	4	
MOTORSCOOTER	12		12	
STREET SWEEPER	12	7	5	
BOX VAN	11	7	4	
GARBAGE OR REFUSE	10	9	1	
TRAVEL	10	8	2	
BOAT	7	5	2	
FIRE TRUCK	7	7		
ARMORED TRUCK	6	5	1	
FORKLIFT	5	3	2	
MAIL TRUCK	5	3	2	
STAKE OR RACK	5	3	2	
TRACTOR TRAILER	4	3	1	

\*BASED ON VEHICLE 1 AND 2

**TYPES OF VEHICLES INVOLVED IN ALL PROPERTY DAMAGE,  
INJURY AND FATAL COLLISIONS\***

<b>Vehicle Type</b>	<b>TOTAL VEHICLES</b>	<b>VEHICLES IN PROPERTY DAMAGE CRASHES</b>	<b>VEHICLES IN INJURY CRASHES</b>	<b>VEHICLES IN FATAL CRASHES</b>
WATER TRUCK	4	3	1	
GOLF CART	3	1	2	
LOG	3	1	2	
OTHER	3	3		
AUTO TOW DOLLY	2	2		
HATCHBACK	2	1	1	
TAXI	2	2		
TENT TRAILER	2	2		
TRAVEL TRAILER	2		2	
BOOM TRUCK	1	1		
CARGO	1		1	
CHIPPER	1	1		
COUPE- 2 DOOR	1		1	
FARM EQUIPMENT	1	1		
FIRE TRUCK LADDER	1	1		
LIVESTOCK RACK	1		1	
PANEL TRUCK	1	1		
POLE	1	1		
TRAILER	1	1		
TRAILER CONVERTER DOLLY	1		1	
WELL DRILLER	1	1		
<b>Grand Total</b>	<b>114632</b>	<b>74163</b>	<b>39896</b>	<b>573</b>

\*BASED ON VEHICLE 1 AND 2

**TOTAL VEHICLES INVOLVED IN COLLISIONS  
2006**

VEHICLE TYPE	TOTAL VEHICLES	PERCENT OF TOTAL
<b>Passenger Car</b>		
PASSENGER CAR	<b>59785</b>	52.15%
LIMOUSINE	<b>160</b>	0.14%
TAXI	<b>2</b>	0.00%
<b>Buses</b>		
BUS (No Designation)	<b>636</b>	0.55%
BUS (Commercial)	<b>106</b>	0.09%
BUS (School)	<b>60</b>	0.05%
<b>Large Trucks</b>		
TRACTOR TRAILER	<b>1308</b>	1.14%
DOUBLES	<b>346</b>	0.30%
TRACTOR ONLY	<b>63</b>	0.05%
TRIPLES	<b>34</b>	0.03%
UNKNOWN CONFIGURATION	<b>868</b>	0.76%
<b>Light Trucks</b>		
PICKUP	<b>20488</b>	17.87%
SUV	<b>16650</b>	14.52%
VAN	<b>6815</b>	5.95%
UTILITY	<b>2913</b>	2.54%
<b>Motorcycles</b>		
MOTORCYCLE	<b>1178</b>	1.03%
MOPED	<b>103</b>	0.09%
MOTORSCOOTER	<b>12</b>	0.01%
<b>Emergency Vehicles</b>		
AMBULANCE	<b>13</b>	0.01%
FIRE VEHICLE	<b>8</b>	0.01%
<b>All Others</b>		
	<b>3084</b>	2.69%
<b>Total All Vehicles</b>	<b>114632</b>	100.00%

## SINGLE VEHICLE ROLLOVER OCCURRENCE BY VEHICLE TYPE

2006

VEHICLE TYPE	ROLLOVER OCCURRENCE				TOTAL	
	YES		NO		NUMBER OF VEHICLES	% OF TOTAL
	NUMBER OF VEHICLES	% OF SUB-TOTAL	NUMBER OF VEHICLES	% OF SUB-TOTAL		

### PDO CRASHES

PASSENGER CARS	243	0.64%	37,889	99.36%	38,132	51.42%
SPORT UTILITY VEH	202	1.86%	10,673	98.14%	10,875	14.66%
LIGHT TRUCKS	284	1.42%	19,779	98.58%	20,063	27.05%
LARGE TRUCKS	68	3.31%	1,987	96.69%	2,055	2.77%
BUSES	1	0.17%	580	99.83%	581	0.78%
MOTORCYCLES	12	5.66%	200	94.34%	212	0.29%
ALL OTHERS	18	0.80%	2,227	99.20%	2,245	3.03%
<b>SUB-TOTAL</b>	<b>828</b>	<b>1.12%</b>	<b>73,335</b>	<b>98.88%</b>	<b>74,163</b>	<b>100.00%</b>

### INJURY CRASHES

PASSENGER CARS	470	2.18%	21,129	97.82%	21,599	54.14%
SPORT UTILITY VEH	328	5.77%	5,361	94.23%	5,689	14.26%
LIGHT TRUCKS	360	3.60%	9,649	96.40%	10,009	25.09%
LARGE TRUCKS	68	12.85%	461	87.15%	529	1.33%
BUSES	0	0.00%	219	100.00%	219	0.55%
MOTORCYCLES	172	16.67%	860	83.33%	1,032	2.59%
ALL OTHERS	22	2.69%	797	97.31%	819	2.05%
<b>SUB-TOTAL</b>	<b>1,420</b>	<b>3.56%</b>	<b>38,476</b>	<b>96.44%</b>	<b>39,896</b>	<b>100.00%</b>

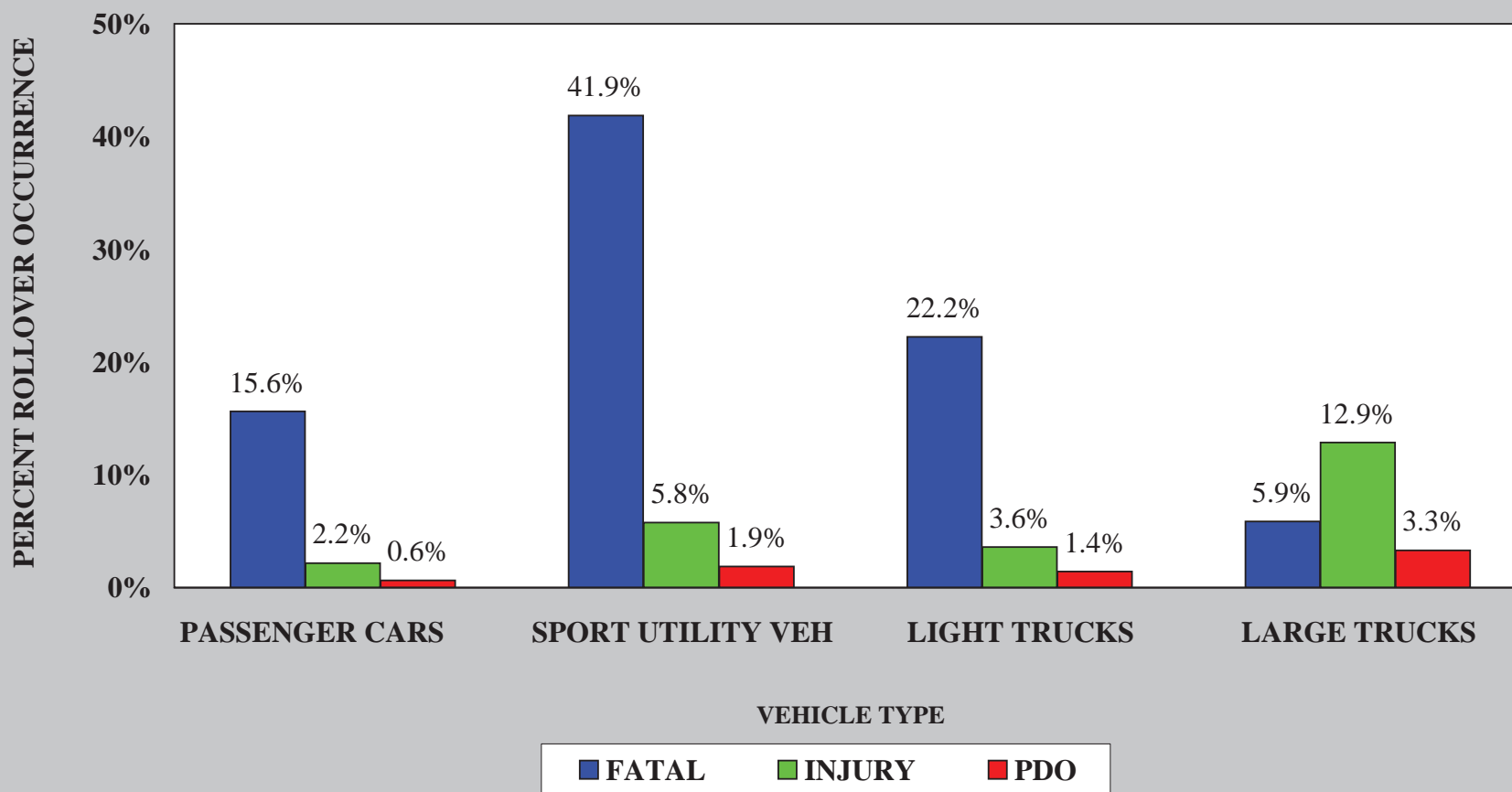
### FATAL CRASHES

PASSENGER CARS	37	15.61%	200	84.39%	237	41.36%
SPORT UTILITY VEH	36	41.86%	50	58.14%	86	15.01%
LIGHT TRUCKS	32	22.22%	112	77.78%	144	25.13%
LARGE TRUCKS	2	5.88%	32	94.12%	34	5.93%
BUSES	0	0.00%	2	100.00%	2	0.35%
MOTORCYCLES	10	20.41%	39	79.59%	49	8.55%
ALL OTHERS	0	0.00%	21	100.00%	21	3.66%
<b>SUB-TOTAL</b>	<b>117</b>	<b>20.42%</b>	<b>456</b>	<b>79.58%</b>	<b>573</b>	<b>100.00%</b>

### ALL CRASHES

PASSENGER CARS	750	1.25%	59,218	98.75%	59,968	52.31%
SPORT UTILITY VEH	566	3.40%	16,084	96.60%	16,650	14.52%
LIGHT TRUCKS	676	2.24%	29,540	97.76%	30,216	26.36%
LARGE TRUCKS	138	5.27%	2,480	94.73%	2,618	2.28%
BUSES	1	0.12%	801	99.88%	802	0.70%
MOTORCYCLES	194	15.00%	1,099	85.00%	1,293	1.13%
ALL OTHERS	40	1.30%	3,045	98.70%	3,085	2.69%
<b>TOTAL</b>	<b>2,365</b>	<b>2.06%</b>	<b>112,267</b>	<b>97.94%</b>	<b>114,632</b>	<b>100.00%</b>

**PERCENT ROLLOVER OCCURRENCE  
BY VEHICLE TYPE**



**MOTORCYCLE CRASH TOTALS BY INJURY/FATAL SEVERITY AND COUNTY \***  
**2004 THRU 2006**

COUNTY	2004				2005				2006			
	INJURY	TOTAL	FATAL	TOTAL	INJURY	TOTAL	FATAL	TOTAL	INJURY	TOTAL	FATAL	TOTAL
	COLLISIONS	INJURIES	COLLISIONS	FATALITIES	COLLISIONS	INJURIES	COLLISIONS	FATALITIES	COLLISIONS	INJURIES	COLLISIONS	FATALITIES
CARSON	21	24			16	17	1	1	21	23		
CHURCHILL	6	6			5	5	2	2	6	6	1	1
CLARK	593	672	29	29	677	763	35	35	688	775	33	33
DOUGLAS	18	18	3	3	16	22	2	2	15	19	1	1
ELKO	15	20	3	3	13	15			12	12		
ESMERALDA	4	4					1	2	1	1		
EUREKA									2	2		
HUMBOLDT	3	3			2	1			4	6		
LANDER	2	2			1	1			5	7		
LINCOLN	4	4			5	7			3	3		
LYON	14	15	2	2	10	13	1	1	11	13	1	1
MINERAL	2	2			1	1			1	1		
NYE	7	8	2	2	7	8	2	2	6	6	3	3
PERSHING									1	1		
STOREY	8	9	3	3	8	11	2	2	5	5		
WASHOE	131	159	4	4	150	159	8	8	146	171	7	8
WHITE PINE	4	5	1	1	6	7			3	4		
<b>TOTAL</b>	<b>832</b>	<b>951</b>	<b>47</b>	<b>47</b>	<b>917</b>	<b>1,030</b>	<b>54</b>	<b>55</b>	<b>930</b>	<b>1,055</b>	<b>46</b>	<b>47</b>

\* BASED ON VEHICLES 1 AND 2 ONLY

INJURIES SHOWN MAY HAVE OCCURRED WITH A PEDESTRIAN OR IN VEHICLES OTHER THAN THE MOTORCYCLE.