



ALCOHOL & DRUG RELATED COLLISIONS



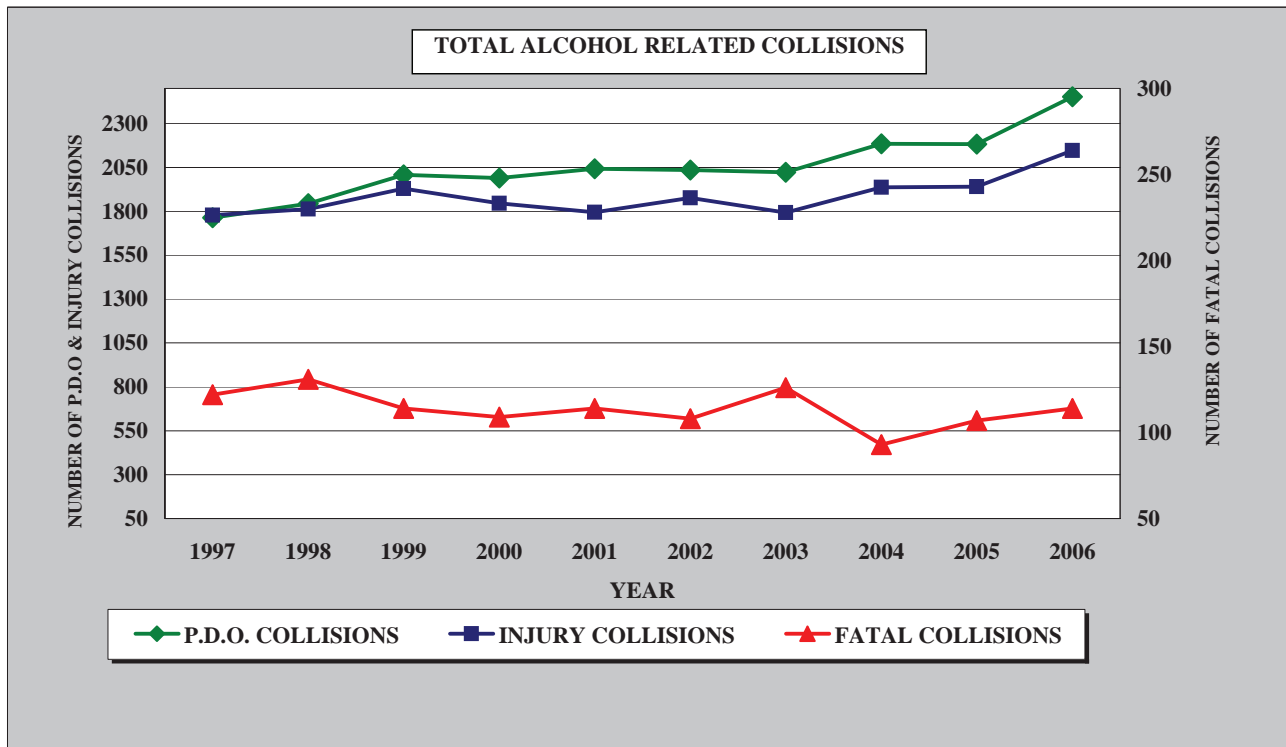
This section identifies alcohol related collisions by presenting the following data displays: collision totals by severity, collision type, county and day of the week; D.U.I. totals and rates by severity; and driver and pedestrian condition collision.

2006 SUMMARY ANALYSIS

- ◆ In the last three years 333 people were killed and 9,391 people were injured in 13,156 collisions involving alcohol.
- ◆ In 2006 Clark County had the highest percentage of alcohol related collisions with 80%. The lowest percentage of collisions involving alcohol was Esmeralda and Eureka Counties with .06%.
- ◆ There were 123 people killed in alcohol related collisions in 2006.
- ◆ Statewide, Midnight to 3:00 AM was the most fatal hours for alcohol related collisions. 25% or 28 of the 114 alcohol related fatal collisions occurred during those 3 hours.
- ◆ Statewide, Saturday & Sunday were the most likely days for fatal alcohol related collisions to occur. 42.1% of all fatal alcohol related collisions occurred on these days.
- ◆ 20% of the total pedestrians killed in 2006 had used alcohol.
- ◆ September 23, 2003 Blood Alcohol Content law was lowered to .08% from .10%.

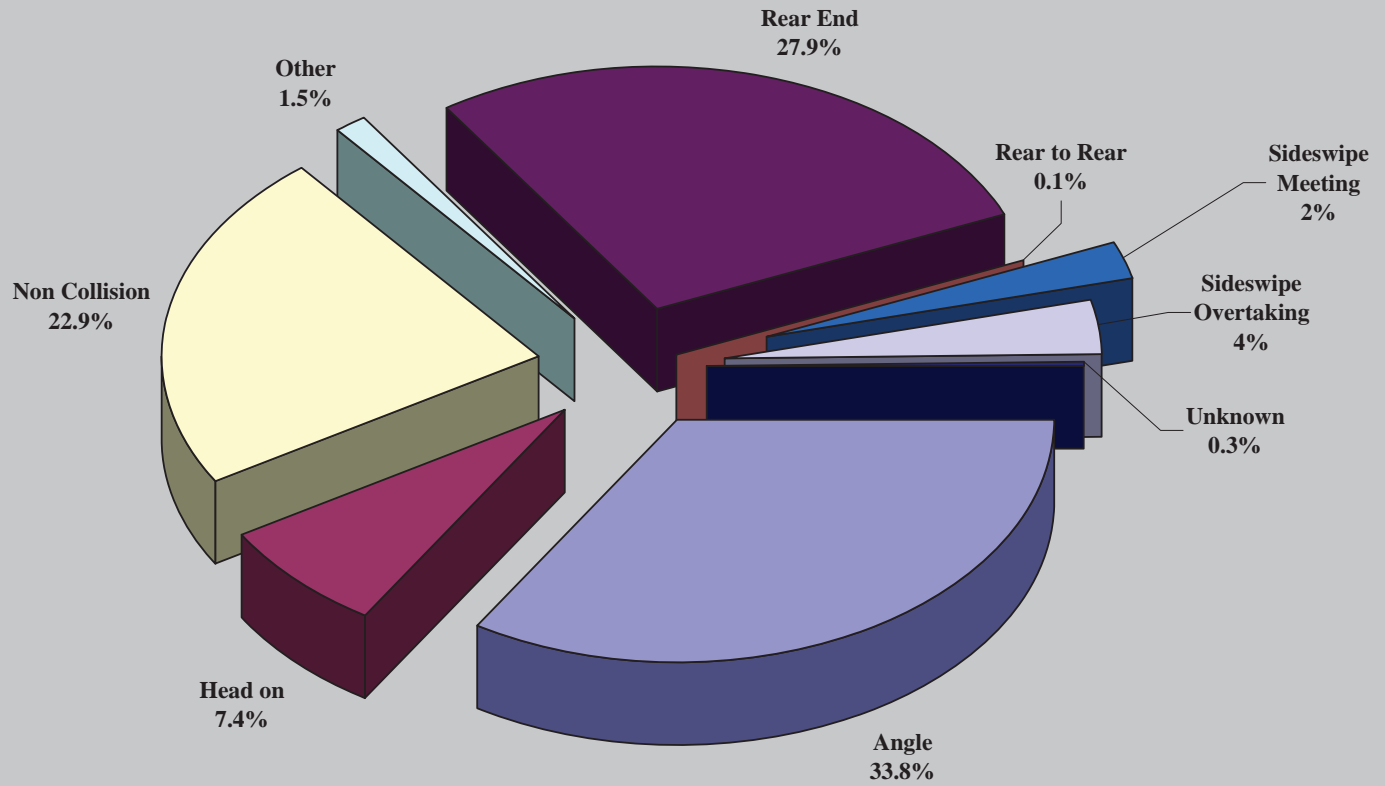
ALCOHOL RELATED COLLISIONS 1997 THRU 2006

YEAR	PROPERTY DAMAGE ONLY COLLISIONS	INJURY COLLISIONS	FATAL COLLISIONS	TOTAL COLLISIONS	TOTAL INJURIES	TOTAL FATALITIES
1997	1764	1778	122	3664	2912	132
1998	1844	1813	131	3788	2887	153
1999	2007	1930	114	4051	3098	128
2000	1990	1845	109	3944	2927	118
2001	2043	1795	114	3952	2895	127
2002	2035	1876	108	4019	3017	132
2003	2023	1792	126	3941	2546	143
2004	2184	1936	93	4213	3065	98
2005	2182	1941	107	4230	3007	112
2006	2452	2147	114	4713	3319	123



THESE COLLISIONS ARE BASED ON DRIVER 1 AND/OR PEDESTRIAN 1 ANY ALCOHOL INVOLVEMENT.

**ALCOHOL RELATED BY COLLISION TYPE
2006**



2004-2006 STATEWIDE ALCOHOL INVOLVED COLLISION
 TOTALS BY COUNTY AND YEAR

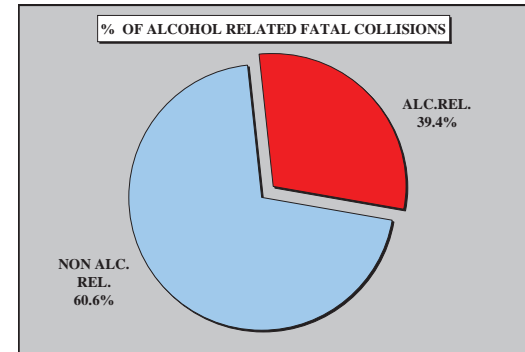
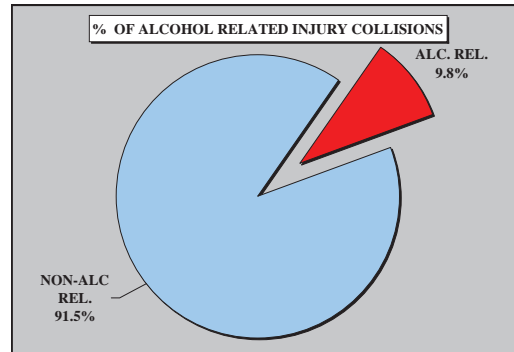
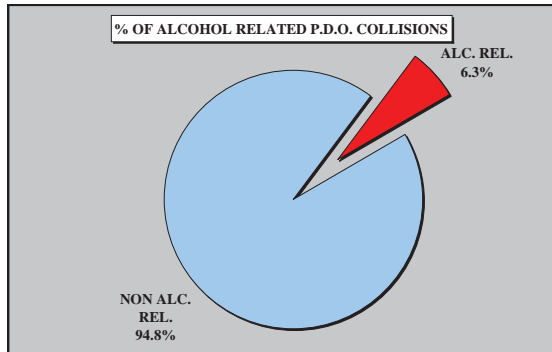
COUNTY	2004						2005						2006					
	TOTAL COLLISIONS	TOTAL P.D.O. COLLISIONS	TOTAL INJURY COLLISIONS	TOTAL INJURIES	TOTAL FATAL COLLISIONS	TOTAL FATALITIES	TOTAL COLLISIONS	TOTAL P.D.O. COLLISIONS	TOTAL INJURY COLLISIONS	TOTAL INJURIES	TOTAL FATAL COLLISIONS	TOTAL FATALITIES	TOTAL COLLISIONS	TOTAL P.D.O. COLLISIONS	TOTAL INJURY COLLISIONS	TOTAL INJURIES	TOTAL FATAL COLLISIONS	TOTAL FATALITIES
CARSON	77	52	25	34	0	0	72	43	28	44	1	1	68	39	26	45	3	3
CHURCHILL	42	26	16	25	0	0	38	21	15	27	2	3	46	25	20	29	1	1
CLARK	3,347	1,693	1,585	2,536	69	72	3,361	1,733	1,547	2,440	81	83	3,788	1,966	1,741	2,675	81	88
DOUGLAS	63	32	28	48	3	3	69	35	28	41	6	8	63	31	32	43	0	0
ELKO	63	40	22	40	1	2	43	15	28	35	0	0	50	27	20	27	3	4
ESMERALDA	5	1	3	5	1	1	3	1	2	2	0	0	3	2	1	1	0	0
EUREKA	7	2	5	6	0	0	8	3	5	6	0	0	3	2	1	1	0	0
HUMBOLDT	27	14	13	15	0	0	18	12	4	4	2	3	16	10	5	8	1	1
LANDER	5	0	5	5	0	0	4	1	2	2	1	1	6	2	4	5	0	0
LINCOLN	7	3	3	4	1	1	15	10	5	7	0	0	10	4	4	7	2	2
LYON	53	32	20	26	1	1	30	15	13	21	2	2	36	14	18	39	4	4
MINERAL	9	5	2	4	2	2	2	2	0	0	0	0	4	1	3	4	0	0
NYE	50	21	26	41	3	3	39	19	18	29	2	2	46	17	22	51	7	7
PERSHING	6	3	2	6	1	1	3	2	1	1	0	0	4	1	2	3	1	1
STOREY	13	2	10	13	1	1	4	1	2	3	1	1	5	1	3	6	1	1
WASHOE	426	252	165	247	9	10	515	268	238	337	9	8	561	308	244	374	9	9
WHITE PINE	13	6	6	10	1	1	6	1	5	8	0	0	4	2	1	1	1	2
TOTAL	4,213	2,184	1,936	3,065	93	98	4,230	2,182	1,941	3,007	107	112	4,713	2,452	2,147	3,319	114	123

THESE COLLISIONS ARE BASED ON DRIVER 1 AND/OR PEDESTRIAN ALCOHOL INVOLVEMENT.

2006 ALCOHOL RELATED COLLISIONS BY COUNTY

COUNTY	TOTAL COLLISIONS	TOTAL ALC. REL. COLLISIONS	% OF TOTAL COLLISIONS	TOTAL P.D.O. COLLISIONS	TOTAL ALC. REL. P.D.O. COLLISIONS	% OF P.D.O. COLLISIONS	TOTAL INJURY COLLISIONS	TOTAL ALC. REL. INJURY COLLISIONS	ALC REL % OF INJURY COLLISIONS	TOTAL FATAL COLLISIONS	TOTAL ALC. REL. FATAL COLLISIONS	ALC REL % OF FATAL COLLISIONS	TOTAL INJURIES	TOTAL ALC. REL. INJURIES	% OF TOTAL INJURIES	TOTAL FATALITIES	TOTAL ALC. REL. FATALITIES	% OF TOTAL FATALITIES
CARSON	1,089	68	6.2%	744	39	5.2%	340	26	7.6%	5	3	60.0%	486	45	9.3%	6	3	50.0%
CHURCHILL	478	46	9.6%	338	25	7.4%	132	20	15.2%	8	1	12.5%	204	29	14.2%	8	1	12.5%
CLARK	50,032	3,488	7.0%	31,799	1,966	6.2%	17,968	1,741	9.7%	265	81	30.6%	26,972	2,675	9.9%	286	88	30.8%
DOUGLAS	741	63	8.5%	464	31	6.7%	271	32	11.8%	6	0	0.0%	410	43	10.5%	7	0	0.0%
ELKO	725	50	6.9%	515	27	5.2%	198	20	10.1%	12	3	25.0%	266	27	10.2%	14	4	28.6%
ESMERALDA	68	3	4.4%	40	2	5.0%	25	1	4.0%	3	0	0.0%	46	1	2.2%	5	0	0.0%
EUREKA	90	3	3.3%	70	2	2.9%	19	1	5.3%	1	0	0.0%	26	1	3.8%	1	0	0.0%
HUMBOLDT	288	16	5.6%	214	10	4.7%	67	5	7.5%	7	1	14.3%	110	8	7.3%	9	1	11.1%
LANDER	108	6	5.6%	72	2	2.8%	34	4	11.8%	2	0	0.0%	57	5	8.8%	4	0	0.0%
LINCOLN	134	10	7.5%	95	4	4.2%	32	4	12.5%	7	2	28.6%	59	7	11.9%	13	2	15.4%
LYON	406	36	8.9%	232	14	6.0%	164	18	11.0%	10	4	40.0%	258	39	15.1%	11	4	36.4%
MINERAL	94	4	4.3%	61	1	1.6%	32	3	9.4%	1	0	0.0%	63	4	6.3%	1	0	0.0%
NYE	486	46	9.5%	299	17	5.7%	167	22	13.2%	20	7	35.0%	255	51	20.0%	23	7	30.4%
PERSHING	111	4	3.6%	71	1	1.4%	35	2	5.7%	5	1	20.0%	60	3	5.0%	6	1	16.7%
STOREY	22	5	22.7%	8	1	12.5%	13	3	23.1%	1	1	0.0%	17	6	35.3%	1	1	0.0%
WASHOE	6,121	561	9.2%	3,761	308	8.2%	2,329	244	10.5%	31	9	29.0%	3,333	374	11.2%	32	9	28.1%
WHITE PINE	149	4	2.7%	111	2	1.8%	34	1	2.9%	4	1	25.0%	47	1	2.1%	6	2	33.3%
TOTAL	61,142	4,413	7.2%	38,894	2,452	6.3%	21,860	2,147	9.8%	388	114	29.4%	32,669	3,319	10.2%	433	123	28.4%

THESE ALCOHOL RELATED COLLISIONS TOTALS ARE BASED ON ANY DRIVER 1 OR PEDESTRIAN ALCOHOL INVOLVEMENT.



ALCOHOL INVOLVED INJURY AND FATAL COLLISIONS BY COUNTY, DAY AND TIME

STATEWIDE

COUNTY	12:AM TO 2:59AM		3:00AM TO 5:59AM		6:00AM TO 8:59AM		9:00AM TO 11:59AM		12:00PM TO 2:59PM		3:00PM TO 5:59PM		6:00PM TO 8:59PM		9:00PM TO 11:59PM	
	INJURY	FATAL	INJURY	FATAL	INJURY	FATAL	INJURY	FATAL	INJURY	FATAL	INJURY	FATAL	INJURY	FATAL	INJURY	FATAL
CARSON	4		1	2	1				1		3	1	8		8	
CHURCHILL	2		2		1		3		4		1	1	2		4	
CLARK	307	22	306	16	173	5	70	1	82	3	188	5	265	15	349	13
DOUGLAS	5		4		3		4		1		5	1	6		5	
ELKO	6		2		3	1	1		2	1	3		2	1	1	
ESMERALDA			1													
EUREKA			1													
HUMBOLDT		1	2								1		1		1	
LANDER			2								1				1	
LINCOLN	2	1	1						1				1			
LYON	2			1	2				2		1	1	4		7	2
MINERAL	1						1						1			
NYE	5	1	1	1		1	2		1		3		5	3	5	1
PERSHING					1							1	1			
STOREY			1						1				1			1
WASHOE	41	3	28	1	15	1	8		15	1	31		54	1	52	2
WHITE PINE									1							1
TOTAL	375	28	352	21	199	8	89	1	111	5	237	10	350	21	433	20

SUNDAY

COUNTY	12:AM TO 2:59AM		3:00AM TO 5:59AM		6:00AM TO 8:59AM		9:00AM TO 11:59AM		12:00PM TO 2:59PM		3:00PM TO 5:59PM		6:00PM TO 8:59PM		9:00PM TO 11:59PM	
	INJURY	FATAL	INJURY	FATAL	INJURY	FATAL	INJURY	FATAL	INJURY	FATAL	INJURY	FATAL	INJURY	FATAL	INJURY	FATAL
CARSON															1	
CHURCHILL	1				1				1			1				
CLARK	81	8	87	4	48	4	18		16	1	31	1	39	1	47	1
DOUGLAS			3				3						2			
ELKO	3						1							1		
ESMERALDA			1													
EUREKA																
HUMBOLDT			2													
LANDER			1								1					
LINCOLN	1								1							
LYON				1									1			1
MINERAL																
NYE	1										1		1			
PERSHING																
STOREY			1													
WASHOE	15	1	10	1	4				5		5		9		8	
WHITE PINE																
TOTAL	102	9	105	6	53	4	22		23	1	38	2	52	2	56	2

**ALCOHOL INVOLVED INJURY AND FATAL COLLISIONS
BY COUNTY, DAY AND TIME**

MONDAY

COUNTY	12:AM TO 2:59AM		3:00AM TO 5:59AM		6:00AM TO 8:59AM		9:00AM TO 11:59AM		12:00PM TO 2:59PM		3:00PM TO 5:59PM		6:00PM TO 8:59PM		9:00PM TO 11:59PM	
	INJURY	FATAL	INJURY	FATAL	INJURY	FATAL	INJURY	FATAL	INJURY	FATAL	INJURY	FATAL	INJURY	FATAL	INJURY	FATAL
CARSON													1		1	
CHURCHILL									1						1	
CLARK	27	6	24		17	1	6		10		25		37	4	45	2
DOUGLAS	1				1											
ELKO	3		1							1	1					
ESMERALDA																
EUREKA																
HUMBOLDT																
LANDER																
LINCOLN																
LYON	1								1				1			
MINERAL							1									
NYE																
PERSHING																
STOREY																
WASHOE					1		1				3		3		5	
WHITE PINE																
TOTAL	32	6	25		19	1	8		12	1	29		42	4	52	2

TUESDAY

COUNTY	12:AM TO 2:59AM		3:00AM TO 5:59AM		6:00AM TO 8:59AM		9:00AM TO 11:59AM		12:00PM TO 2:59PM		3:00PM TO 5:59PM		6:00PM TO 8:59PM		9:00PM TO 11:59PM	
	INJURY	FATAL	INJURY	FATAL	INJURY	FATAL	INJURY	FATAL	INJURY	FATAL	INJURY	FATAL	INJURY	FATAL	INJURY	FATAL
CARSON				1							1		1		2	
CHURCHILL																
CLARK	21	1	26		14		5		6		28	1	25	1	38	1
DOUGLAS					1								1		1	
ELKO					1				1				1			
ESMERALDA																
EUREKA																
HUMBOLDT		1														
LANDER																
LINCOLN		1														
LYON					2						1				1	
MINERAL																
NYE		1					1						2			1
PERSHING					1											
STOREY									1							
WASHOE	2		4		1				2		4		10	1	5	1
WHITE PINE																
TOTAL	23	4	30	1	20		6		10		33	2	40	2	47	3

ALCOHOL INVOLVED INJURY AND FATAL COLLISIONS BY COUNTY, DAY AND TIME

WEDNESDAY

COUNTY	12:AM TO 2:59AM		3:00AM TO 5:59AM		6:00AM TO 8:59AM		9:00AM TO 11:59AM		12:00PM TO 2:59PM		3:00PM TO 5:59PM		6:00PM TO 8:59PM		9:00PM TO 11:59PM	
	INJURY	FATAL	INJURY	FATAL	INJURY	FATAL	INJURY	FATAL	INJURY	FATAL	INJURY	FATAL	INJURY	FATAL	INJURY	FATAL
CARSON			1										3		1	
CHURCHILL																
CLARK	31		26	5	19		3		11	1	23		26		48	1
DOUGLAS					1						1		1			
ELKO															1	
ESMERALDA																
EUREKA																
HUMBOLDT											1				1	
LANDER			1													
LINCOLN																
LYON													1			1
MINERAL													1			
NYE	1			1										1		
PERSHING																
STOREY																
WASHOE	4		2				3		1		2		4		7	
WHITE PINE																
TOTAL	36		30	6	20		6		12	1	27		36	1	58	2

THURSDAY

COUNTY	12:AM TO 2:59AM		3:00AM TO 5:59AM		6:00AM TO 8:59AM		9:00AM TO 11:59AM		12:00PM TO 2:59PM		3:00PM TO 5:59PM		6:00PM TO 8:59PM		9:00PM TO 11:59PM	
	INJURY	FATAL	INJURY	FATAL	INJURY	FATAL	INJURY	FATAL	INJURY	FATAL	INJURY	FATAL	INJURY	FATAL	INJURY	FATAL
CARSON	2				1						1		2			
CHURCHILL							1									
CLARK	39	2	25	1	14		7		12		23	2	33	4	37	2
DOUGLAS											1		1		2	
ELKO					1				1							
ESMERALDA																
EUREKA																
HUMBOLDT																
LANDER																
LINCOLN																
LYON									1				1		1	
MINERAL																
NYE						1					1		1		1	
PERSHING													1			
STOREY																
WASHOE	5	1	1						3		3		8		7	
WHITE PINE																
TOTAL	46	3	26	1	16	1	8		17		28	3	47	4	48	2

**ALCOHOL INVOLVED INJURY AND FATAL COLLISIONS
BY COUNTY, DAY AND TIME**

FRIDAY

COUNTY	12:AM TO 2:59AM		3:00AM TO 5:59AM		6:00AM TO 8:59AM		9:00AM TO 11:59AM		12:00PM TO 2:59PM		3:00PM TO 5:59PM		6:00PM TO 8:59PM		9:00PM TO 11:59PM	
	INJURY	FATAL	INJURY	FATAL	INJURY	FATAL	INJURY	FATAL	INJURY	FATAL	INJURY	FATAL	INJURY	FATAL	INJURY	FATAL
CARSON											2		1		2	
CHURCHILL													1		1	
CLARK	40	3	34	2	17		13		10		27	1	62	1	66	3
DOUGLAS	1						1				2				2	
ELKO					1											
ESMERALDA																
EUREKA			1													
HUMBOLDT													1			
LANDER																
LINCOLN			1													
LYON															3	
MINERAL																
NYE			1								1		1	2	4	
PERSHING												1				
STOREY																
WASHOE	6	1	2		2		1		2		7		14		15	1
WHITE PINE									1							1
TOTAL	47	4	39	2	20		15		13		39	2	80	3	93	5

SATURDAY

COUNTY	12:AM TO 2:59AM		3:00AM TO 5:59AM		6:00AM TO 8:59AM		9:00AM TO 11:59AM		12:00PM TO 2:59PM		3:00PM TO 5:59PM		6:00PM TO 8:59PM		9:00PM TO 11:59PM	
	INJURY	FATAL	INJURY	FATAL	INJURY	FATAL	INJURY	FATAL	INJURY	FATAL	INJURY	FATAL	INJURY	FATAL	INJURY	FATAL
CARSON	2			1					1						1	
CHURCHILL	1		2				2		2		1		1		2	
CLARK	68	2	84	4	44		18	1	17	1	31		43	4	68	3
DOUGLAS	3		1						1		1	1	1			
ELKO			1			1					2		1			
ESMERALDA																
EUREKA																
HUMBOLDT																
LANDER															1	
LINCOLN	1													1		
LYON	1										1				2	
MINERAL	1															
NYE	3						1		1							
PERSHING																
STOREY													1			1
WASHOE	9		9		7	1	3		2	1	7		6		5	
WHITE PINE																
TOTAL	89	2	97	5	51	2	24	1	24	2	43	1	53	5	79	4

2004-2006 STATEWIDE DRUG INVOLVED COLLISIONS TOTALS BY COUNTY AND YEAR

COUNTY	2004						2005						2006					
	TOTAL COLLISIONS	TOTAL P.D.O. COLLISIONS	TOTAL INJURY COLLISIONS	TOTAL INJURIES	TOTAL FATAL COLLISIONS	TOTAL FATALITIES	TOTAL COLLISIONS	TOTAL P.D.O. COLLISIONS	TOTAL INJURY COLLISIONS	TOTAL INJURIES	TOTAL FATAL COLLISIONS	TOTAL FATALITIES	TOTAL COLLISIONS	TOTAL P.D.O. COLLISIONS	TOTAL INJURY COLLISIONS	TOTAL INJURIES	TOTAL FATAL COLLISIONS	TOTAL FATALITIES
CARSON	3	2	1	1			6	2	3	3	1	1	14	6	7	8	1	1
CHURCHILL	2	1		1	1	1	1	1					3		3	3		
CLARK	387	182	173	192	32	32	465	195	241	254	29	29	526	252	239	258	35	35
DOUGLAS	5	3	2	2			4	1	2	3	1	1	13	8	5	5		
ELKO							2		2	2			3	1		1	2	2
ESMERALDA							3		2	2	1	1	1		1	1		
EUREKA													4	3	1	1		
HUMBOLDT	6	5	1	1			5	3	2	1			1		1	1		
LANDER							1			1	1	1	1			1	1	1
LINCOLN	2	2					1	1					7	1	6	6		
LYON	4	1	1	2	2	2							2		1	2	1	1
MINERAL	2		1	1	1	1	1	1					10	3	6	6	1	1
NYE	5		4	5	1	1	6	2	2	4	2	2	2		2	2		
PERSHING				1			1	1					1		1	1		
STOREY													61	31	28	29	2	2
WASHOE	16	6	8	10	2	2	30	21	7	7	2	2	1	1				
WHITE PINE							3	3										
TOTAL	432	202	191	216	39	39	529	231	261	277	37	37	650	306	301	325	43	43

NOT ALL DRIVERS IN CRASHES ARE TESTED FOR DRUG USE.

TOTALS ARE BASED ON SAFETY ENGINEERING'S RECORDS OF DRIVER 1'S AND/OR PEDESTRIAN 1'S DRUG CONDITION.

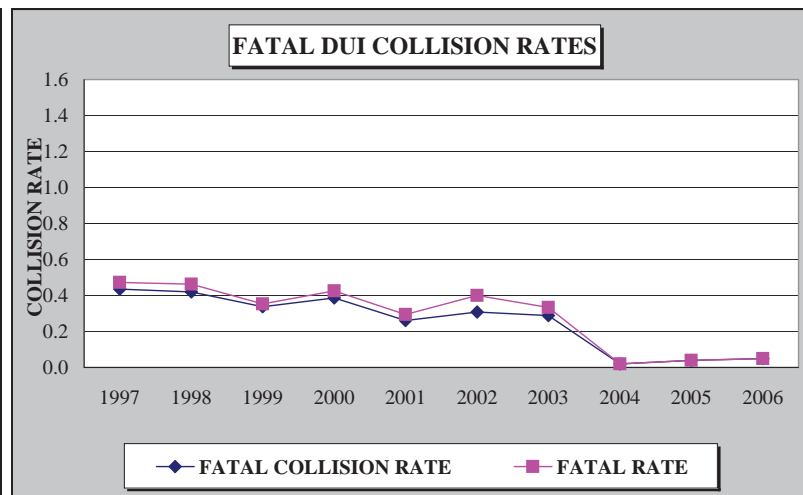
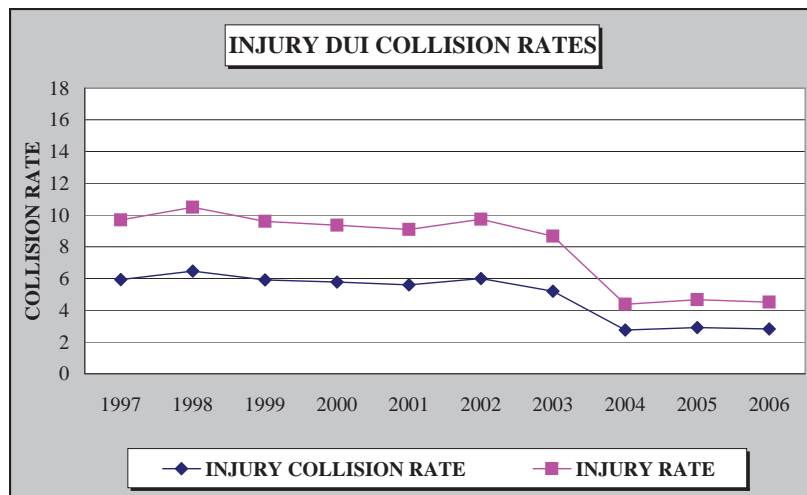
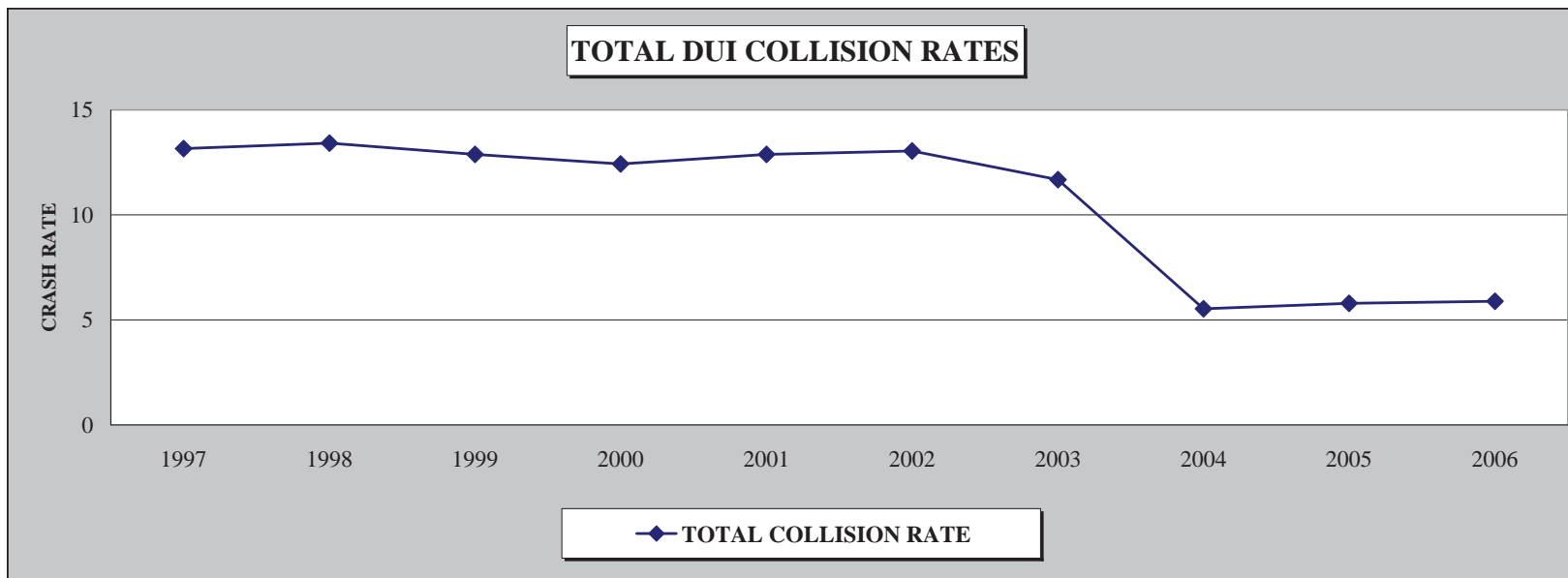
D.U.I.* COLLISION TOTALS AND RATES BY SEVERITY 1997 THRU 2006

YEAR	PROPERTY DAMAGE ONLY COLLISION	P.D.O. COLLISION RATE	INJURY COLLISION	INJURY COLLISION RATE	FATAL COLLISION	FATAL COLLISION RATE	TOTAL COLLISION	TOTAL COLLISION RATE	TOTAL INJURIES	TOTAL INJURIES RATE	TOTAL FATALITIES	TOTAL FATALITIES RATE
1997	1107	6.78	970	5.94	71	0.43	2148	13.16	1581	9.68	77	0.47
1998	1074	6.53	1062	6.46	69	0.42	2205	13.42	1723	10.48	76	0.46
1999	1166	6.65	1036	5.91	59	0.34	2261	12.89	1683	9.59	62	0.35
2000	1122	6.27	1035	5.78	69	0.39	2226	12.43	1675	9.36	76	0.42
2001	1294	7.03	1032	5.60	48	0.26	2374	12.89	1674	9.09	54	0.29
2002	1294	6.73	1155	6.01	59	0.31	2508	13.05	1869	9.72	77	0.40
2003	1206	6.19	1014	5.21	56	0.29	2276	11.69	1687	8.66	65	0.33
2004	563	2.75	565	2.76	4	0.02	1132	5.53	897	4.38	4	0.02
2005	595	2.86	605	2.90	8	0.04	1208	5.80	973	4.67	8	0.04
2006	667	3.03	620	2.81	11	0.05	1298	5.89	996	4.52	11	0.05

COLLISIONS ARE BASED ON DRIVER 1 DRIVING UNDER THE INFLUENCE*.

***Blood Alcohol Content (BAC) >= 0.10%. BAC was changed 9/23/03 to .08%
COLLISION RATES PER 100 MILLION VEHICLE MILES.**

D.U.I.* COLLISION RATES 1997 THRU 2006



THESE CRASHES ARE BASED ON DRIVER 1 DRIVING UNDER THE INFLUENCE*.

*BAC ≥ 0.10% BAC was changed 9/23/03 to .08%

CRASH RATES PER 100 MILLION VEHICLE MILES.

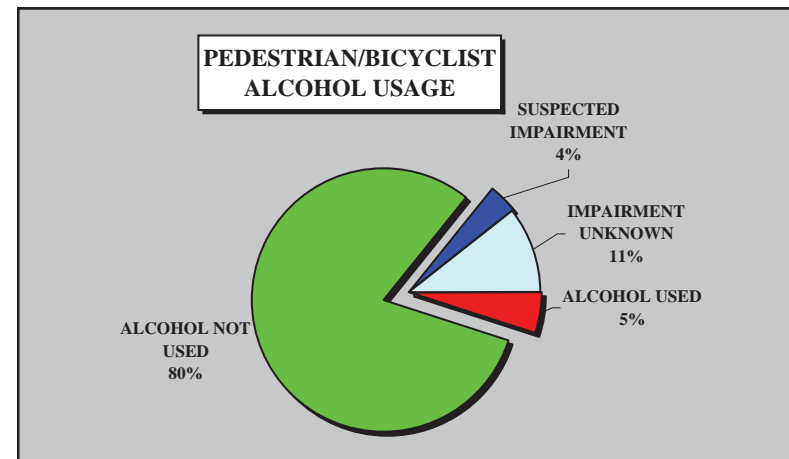
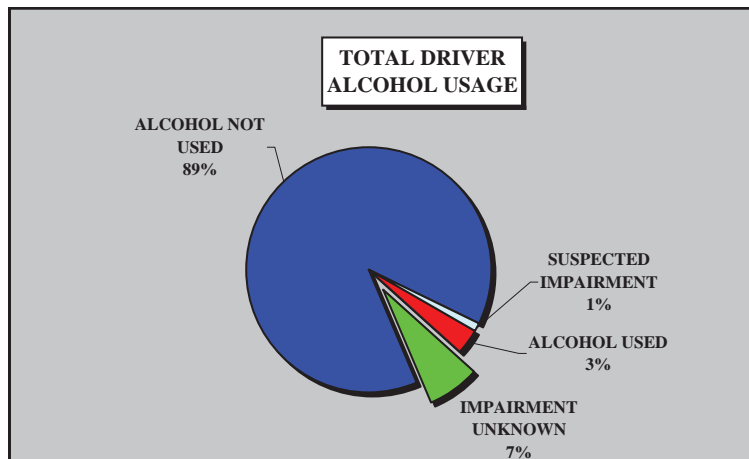
STATEWIDE DRIVER AND PEDESTRIAN ALCOHOL CONDITION 2006

DRIVER CONDITION

DRIVER CONDITION	DRIVERS IN P.D.O. COLLISIONS	DRIVERS IN INJURY COLLISIONS	DRIVERS IN FATAL COLLISIONS	DRIVERS IN TOTAL COLLISIONS
ALCOHOL USED	1,966	1,644	86	3,696
IMPAIRMENT UNKNOWN	5,579	1,954	164	7,697
ALCOHOL NOT USED	62,679	34,761	281	97,721
SUSPECTED IMPAIRMENT	605	577	22	1,204
TOTAL	70,829	38,936	553	110,318

PEDESTRIAN/BICYCLIST CONDITION

PEDESTRIAN/BICYCLIST CONDITION	INJURY COLLISIONS	FATAL COLLISIONS	TOTAL COLLISIONS
ALCOHOL USED	70	11	81
ALCOHOL NOT USED	1,305	31	1,336
SUSPECTED IMPAIRMENT	57	2	59
IMPAIRMENT UNKNOWN	145	31	176
TOTAL	1,577	75	1,652



DRIVER TOTALS ARE BASED ON DRIVER 1 AND DRIVER 2 CONDITIONS.

PEDESTRIAN TOTALS ARE BASED ON THE 1ST PEDESTRIAN/BICYCLIST INVOLVED IN THE CRASH.

DRIVER AND PEDESTRIAN/BICYCLIST CONDITION BASED ON FACTORS AND MORE THAN ONE FACTOR CAN BE CHECKED PER COLLISION