

# VEHICLES

**This section presents a series of data displays, which identify types of vehicles involved in crashes and specific motorcycle crash information.**

## **1999 SUMMARY ANALYSIS**

The Standard passenger car was involved in more crashes than any other type of vehicle in 1999, followed by the pick up truck then the \*small passenger car.

Motorcycle fatal crashes declined then rose from 1997 through 1999 - 25, 13 and 19 respectively (this does not include "moped" deaths).

The counties with motorcycle fatalities in 1999 were Clark with 13, Washoe with 3, Churchill with 2 and Douglas with 1.

Total number of large trucks involved in crashes has increased from 3,036 in 1997 to 3,792 in 1999. This reflects a 24.9% increase.

1,902 motor vehicles were determined to be "totaled" in traffic crashes in 1999. 11,513 received major damage, 38,875 were moderately damaged and 40,802 received minor damage.

\*Small Passenger Car - Includes very small passenger such as a Toyota Corolla, VW Bug, Honda Civic or Del Sol etc.  
Any small 2 door vehicle.

**TYPES OF VEHICLES INVOLVED IN ALL PROPERTY DAMAGE,  
INJURY, AND FATAL CRASHES\***

TYPE OF VEHICLE	TOTAL VEHICLES	VEHICLES IN PROPERTY DAMAGE CRASHES	VEHICLES IN INJURY CRASHES	VEHICLES IN FATAL CRASHES
STANDARD PASSENGER CAR	73,207	49,655	23,363	189
SMALL PASSENGER CAR	6,324	4,204	2,055	65
PICK-UP TRUCK	19,266	13,480	5,697	89
MOTORCYCLE	697	143	537	17
SINGLE UNIT TRUCK	2,055	1,598	449	8
TRUCK WITH ONE TRAILER	1,583	1,231	325	27
TRUCK WITH TWO TRAILERS	135	108	25	2
TRUCK WITH THREE TRAILERS	19	16	3	0
OTHER	30	10	18	2
FARM IMPLEMENT	20	13	7	0
MOBILE HOME (PULLED BY VEH.)	9	7	2	0
MOTOR HOME	150	116	34	0
BUS (COMMERCIAL)	613	482	128	3
BUS (SCHOOL)	163	125	37	1
PICKUP WITH TRAILER	569	433	130	6
CAR WITH TRAILER	83	57	25	1
MOPED	39	8	30	1
LAW ENFORCEMENT VEHICLE	280	197	83	0
AMBULANCE	30	24	6	0
FIRE FIGHTING VEHICLE	37	32	5	0
CONSTRUCTION VEHICLE	73	55	16	2
TAXI	941	612	327	2
MOTOCYCLE W/ TRAILER OR SIDECAR	4	33	8	1
MOTOR HOME WITH TRAILER	572	498	74	0
UNKNOWN	826	631	195	0
<b>TOTAL</b>	<b>107,767</b>	<b>73,770</b>	<b>33,581</b>	<b>416</b>

\* BASED ON VEHICLES 1 AND 2

# TOTAL VEHICLES INVOLVED IN CRASHES

1999

VEHICLE TYPE	TOTAL VEHICLES	% OF TOTAL
<b>PASSENGER CARS</b>		
STANDARD PASSENGER CAR	73,207	67.93%
SMALL PASSENGER CAR	6,324	5.87%
TAXI	941	0.87%
LAW ENFORCEMENT VEHICLE	280	0.26%
CAR WITH TRAILER	83	0.08%
<b>LIGHT TRUCKS</b>		
PICK-UP TRUCK	19,266	17.88%
PICKUP WITH TRAILER	569	0.53%
<b>LARGE TRUCKS</b>		
SINGLE UNIT TRUCK	2,055	1.91%
TRUCK WITH ONE TRAILER	1,583	1.47%
TRUCK WITH TWO TRAILERS	135	0.13%
TRUCK WITH THREE TRAILERS	19	0.02%
<b>BUSES</b>		
BUS (COMMERCIAL)	613	0.57%
BUS (SCHOOL)	163	0.15%
<b>MOTORCYCLES</b>		
MOTORCYCLES	697	0.65%
MOPED	39	0.04%
MOTORCYCLE WITH TRAILER OR SIDECAR	4	0.00%
<b>ALL OTHERS</b>		
MOTOR HOME	150	0.14%
CONSTRUCTION VEHICLE	73	0.07%
MOTOR HOME WITH TRAILER	42	0.04%
FIRE FIGHTING VEHICLE	37	0.03%
OTHER	30	0.03%
AMBULANCE	30	0.03%
FARM IMPLEMENT	20	0.02%
MOBILE HOME (PULLED BY VEH.)	9	0.01%
UNKNOWN	1,398	1.30%
<b>TOTAL VEHICLES</b>	<b>107,767</b>	<b>100.00%</b>

## VEHICLES INVOLVED IN CRASHES BY VEHICLE TYPE, ROLLOVER OCCURRENCE, AND CRASH SEVERITY

1999

VEHICLE TYPE	ROLLOVER OCCURRENCE				TOTAL	
	YES		NO			
	NUMBER OF VEHICLES	% OF TOTAL	NUMBER OF VEHICLES	% OF TOTAL	NUMBER OF VEHICLES	% OF TOTAL

### PDO CRASHES

PASSENGER CARS	500	0.91%	54,225	99.09%	54,725	74.18%
LIGHT TRUCKS	235	1.69%	13,678	98.31%	13,913	18.86%
LARGE TRUCKS	61	2.07%	2,892	97.93%	2,953	4.00%
BUSES	0	0.00%	607	100.00%	607	0.82%
MOTORCYCLES	9	5.88%	144	94.12%	153	0.21%
ALL OTHERS	2	0.14%	1,417	99.86%	1,419	1.92%
<b>TOTAL</b>	<b>807</b>	<b>1.09%</b>	<b>72,963</b>	<b>98.91%</b>	<b>73,770</b>	<b>100.00%</b>

### INJURY CRASHES

PASSENGER CARS	694	2.68%	25,159	97.32%	25,853	76.99%
LIGHT TRUCKS	229	3.93%	5,598	96.07%	5,827	17.35%
LARGE TRUCKS	46	5.74%	756	94.26%	802	2.39%
BUSES	0	0.00%	165	100.00%	165	0.49%
MOTORCYCLES	56	9.84%	513	90.16%	569	1.69%
ALL OTHERS	7	1.92%	358	98.08%	365	1.09%
<b>TOTAL</b>	<b>1,032</b>	<b>3.07%</b>	<b>32,549</b>	<b>96.93%</b>	<b>33,581</b>	<b>100.00%</b>

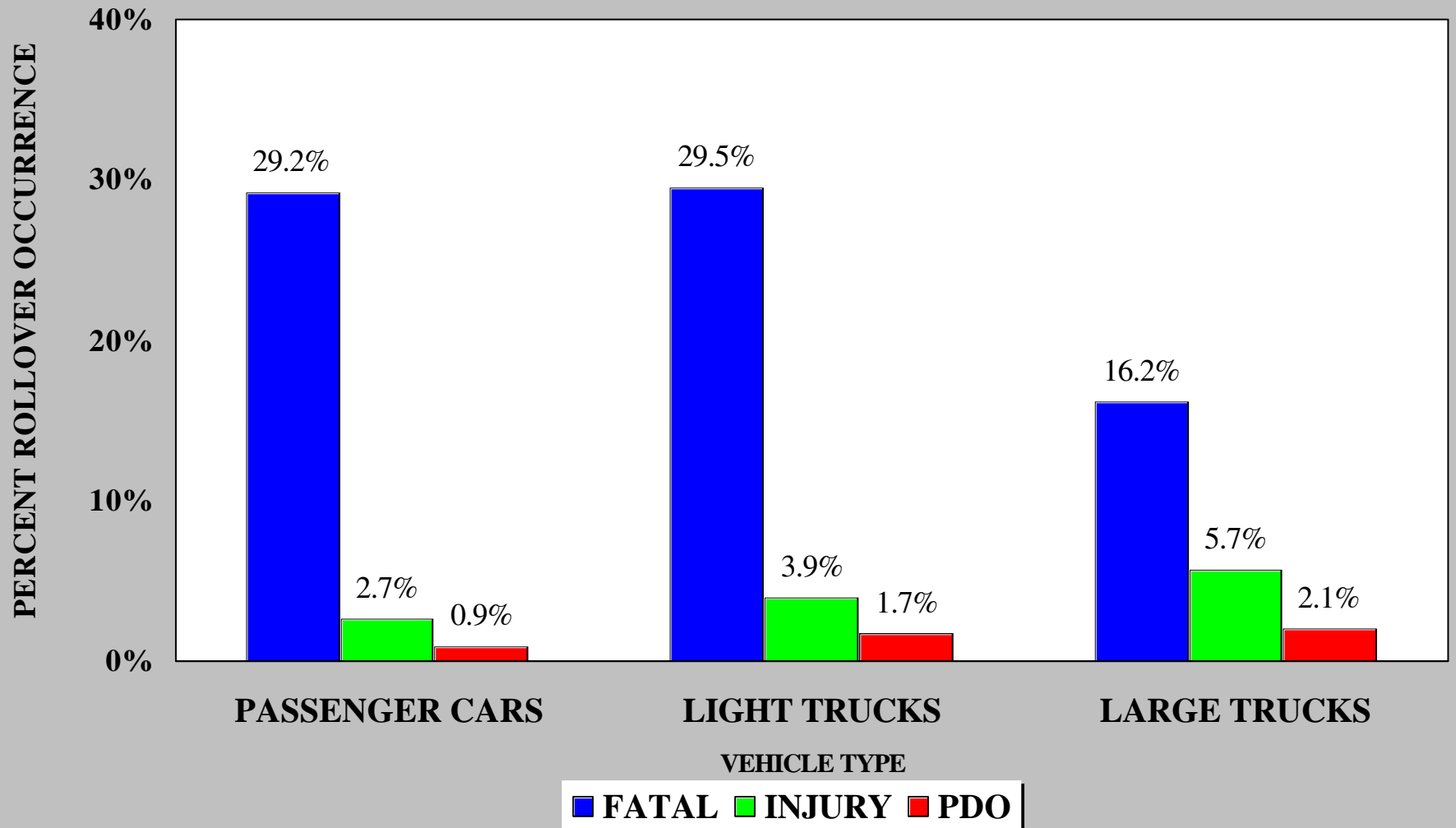
### FATAL CRASHES

PASSENGER CARS	75	29.18%	182	70.82%	257	61.78%
LIGHT TRUCKS	28	29.47%	67	70.53%	95	22.84%
LARGE TRUCKS	6	16.22%	31	83.78%	37	8.89%
BUSES	0	0.00%	4	100.00%	4	0.96%
MOTORCYCLES	0	0.00%	18	100.00%	18	4.33%
ALL OTHERS	0	0.00%	5	100.00%	5	1.20%
<b>TOTAL</b>	<b>109</b>	<b>26.20%</b>	<b>307</b>	<b>73.80%</b>	<b>416</b>	<b>100.00%</b>

### ALL CRASHES

PASSENGER CARS	1,269	1.57%	79,566	98.43%	80,835	75.01%
LIGHT TRUCKS	492	2.48%	19,343	97.52%	19,835	18.41%
LARGE TRUCKS	113	2.98%	3,679	97.02%	3,792	3.52%
BUSES	0	0.00%	776	100.00%	776	0.72%
MOTORCYCLES	65	8.78%	675	91.22%	740	0.69%
ALL OTHERS	9	0.50%	1,780	99.50%	1,789	1.66%
<b>TOTAL</b>	<b>1,948</b>	<b>1.81%</b>	<b>105,819</b>	<b>98.19%</b>	<b>107,767</b>	<b>100.00%</b>

SUV's are included as a Standard Passenger Car.

**PERCENT ROLLOVER OCCURRENCE  
BY VEHICLE TYPE AND CRASH SEVERITY**

**TOTAL TRUCKS INVOLVED IN CRASHES BY TYPE  
1997 THRU 1999**

<b>TRUCK CRASHES</b>	<b>1997 TOTAL VEHICLES</b>	<b>1998 TOTAL VEHICLES</b>	<b>1999 TOTAL VEHICLES</b>
SINGLE UNIT TRUCK	1,321	1,879	2,055
TRUCK WITH ONE TRAILER	1,584	1,498	1,583
TRUCK WITH TWO TRAILERS	114	130	135
TRUCK WITH THREE TRAILERS	17	27	19
<b>TOTAL TRUCK CRASHES</b>	<b>3,036</b>	<b>3,534</b>	<b>3,792</b>

**DOES NOT INCLUDE BUSES, MOTOR HOMES, FIRE FIGHTING VEHICLES, OR OTHER VEHICLE CLASSIFICATIONS THAT MAY TYPICALLY MEET NGA REQUIREMENTS.**

**MOTORCYCLE CRASH TOTALS BY SEVERITY AND COUNTY  
1997 THRU 1999**

COUNTY	1997				1998				1999			
	INJURY CRASHES	TOTAL INJURIES	FATAL CRASHES	TOTAL FATALITIES	INJURY CRASHES	TOTAL INJURIES	FATAL CRASHES	TOTAL FATALITIES	INJURY CRASHES	TOTAL INJURIES	FATAL CRASHES	TOTAL FATALITIES
CARSON	10	11	1	1	10	11	0	0	19	23	0	0
CHURCHILL	3	3	0	0	7	9	0	0	9	10	1	2
CLARK	351	414	16	16	367	426	11	12	374	430	12	13
DOUGLAS	7	8	1	1	7	9	1	1	11	12	1	1
ELKO	4	4	0	0	4	6	0	0	8	10	0	0
ESMERALDA	2	2	0	0	1	1	0	0	0	0	0	0
EUREKA	0	0	0	0	0	0	0	0	0	0	0	0
HUMBOLDT	6	7	0	0	2	2	0	0	4	4	0	0
LANDER	1	1	0	0	0	0	0	0	2	2	0	0
LINCOLN	1	1	0	0	1	1	0	0	0	0	0	0
LYON	3	5	0	0	6	10	0	0	5	5	0	0
MINERAL	1	1	0	0	0	0	0	0	2	2	0	0
NYE	8	10	0	0	8	12	0	0	4	4	0	0
PERSHING	1	1	0	0	0	0	0	0	1	1	0	0
STOREY	1	1	0	0	2	3	0	0	3	4	0	0
WASHOE	85	98	5	7	71	84	0	0	89	108	3	3
WHITE PINE	3	4	0	0	3	3	0	0	1	1	0	0
<b>TOTAL</b>	<b>487</b>	<b>571</b>	<b>23</b>	<b>25</b>	<b>489</b>	<b>577</b>	<b>12</b>	<b>13</b>	<b>532</b>	<b>616</b>	<b>17</b>	<b>19</b>