



# VEHICLES

**This section presents a series of data displays, which identify types of vehicles involved in crashes and specific motorcycle crash information.**

## **1998 SUMMARY ANALYSIS**

- ◆ The Standard passenger car was involved in more crashes than any other type of vehicle in 1998, followed by the pick up truck then the small passenger car.
- ◆ Motorcycle fatal crashes rose and then declined from 1996 through 1998 - 17, 23 and 12 respectively (this does not include "moped" deaths).
- ◆ Two of the 17 counties had motorcycle fatalities in 1998. Twelve occurred in Clark, one in Douglas.
- ◆ Total number of large trucks involved in crashes has increased from 2,926 in 1996 to 3,534 in 1998. This reflects a 20.8% increase.
- ◆ 1,968 motor vehicles were determined to be "totaled" in traffic crashes in 1998. 11,798 received major damage, 37,828 were moderately damaged and 41,152 received minor damage.

**TYPES OF VEHICLES INVOLVED IN ALL PROPERTY DAMAGE, INJURY AND FATAL CRASHES\***

TYPE OF VEHICLE	TOTAL VEHICLES	VEHICLES IN PROPERTY DAMAGE CRASHES	VEHICLES IN INJURY CRASHES	VEHICLES IN FATAL CRASHES
STANDARD PASSENGER CAR	77,528	53,512	23,791	225
SMALL PASSENGER CAR	4,147	2,737	1,339	71
PICK-UP TRUCK	19,457	13,802	5,574	81
MOTORCYCLE	645	140	493	12
SINGLE UNIT TRUCK	1,986	1,578	398	10
TRUCK WITH ONE TRAILER	1,576	1,214	338	24
TRUCK WITH TWO TRAILERS	134	104	27	3
TRUCK WITH THREE TRAILERS	29	23	6	0
OTHER	42	17	25	0
FARM IMPLEMENT	12	10	2	0
MOBILE HOME (PULLED BY VEH.)	2	2	0	0
MOTOR HOME	167	139	26	2
BUS (COMMERCIAL)	603	460	138	5
BUS (SCHOOL)	183	153	30	0
PICKUP WITH TRAILER	444	350	91	3
CAR WITH TRAILER	115	88	23	4
MOPED	31	5	26	0
LAW ENFORCEMENT VEHICLE	237	164	71	2
AMBULANCE	14	11	3	0
FIRE FIGHTING VEHICLE	23	23	0	0
CONSTRUCTION VEHICLE	78	62	16	0
TAXI	844	575	267	2
MOTOR HOME WITH TRAILER	24	18	6	0
UNKNOWN	73	58	15	0
<b>TOTAL</b>	<b>108,394</b>	<b>75,245</b>	<b>32,705</b>	<b>444</b>

\* BASED ON VEHICLES 1 AND 2

## TOTAL VEHICLES INVOLVED IN CRASHES

1998

VEHICLE TYPE	TOTAL VEHICLES	% OF TOTAL
<b>PASSENGER CARS</b>		
STANDARD PASSENGER CAR	77,528	71.52%
SMALL PASSENGER CAR	4,147	3.83%
CAR WITH TRAILER	115	0.11%
TAXI	844	0.78%
LAW ENFORCEMENT VEHICLE	237	0.22%
<b>LIGHT TRUCKS</b>		
PICK-UP TRUCK	19,457	17.95%
PICKUP WITH TRAILER	444	0.41%
<b>LARGE TRUCKS</b>		
SINGLE UNIT TRUCK	1,986	1.83%
TRUCK WITH ONE TRAILER	1,576	1.45%
TRUCK WITH TWO TRAILERS	134	0.12%
TRUCK WITH THREE TRAILERS	29	0.03%
<b>BUSES</b>		
BUS (COMMERCIAL)	603	0.56%
BUS (SCHOOL)	183	0.17%
<b>MOTORCYCLES</b>		
MOTORCYCLES	645	0.60%
MOPED	31	0.03%
MOTORCYCLE WITH TRAILER OR SIDECAR	0	0.00%
<b>ALL OTHERS</b>		
OTHER	42	0.04%
FARM IMPLEMENT	12	0.01%
MOBILE HOME (PULLED BY VEH.)	2	0.00%
MOTOR HOME	167	0.15%
AMBULANCE	14	0.01%
FIRE FIGHTING VEHICLE	23	0.02%
CONSTRUCTION VEHICLE	78	0.07%
MOTOR HOME WITH TRAILER	24	0.02%
UNKNOWN	73	0.07%
<b>TOTAL VEHICLES</b>	<b>108,394</b>	<b>100.00%</b>

**VEHICLES INVOLVED IN CRASHES BY VEHICLE TYPE,  
ROLLOVER OCCURRENCE AND CRASH SEVERITY**

**1998**

VEHICLE TYPE	ROLLOVER OCCURRENCE				TOTAL	
	YES		NO		NUMBER OF CRASHES	% OF TOTAL
	NUMBER OF CRASHES	% OF TOTAL	NUMBER OF CRASHES	% OF TOTAL		

**PDO CRASHES**

PASSENGER CARS	500	0.88%	56,576	99.12%	57,076	75.85%
LIGHT TRUCKS	235	1.66%	13,917	98.34%	14,152	18.81%
LARGE TRUCKS	61	2.09%	2,858	97.91%	2,919	3.88%
BUSES	0	0.00%	613	100.00%	613	0.81%
MOTORCYCLES	9	6.21%	136	93.79%	145	0.19%
ALL OTHERS	2	0.59%	338	99.41%	340	0.45%
<b>TOTAL</b>	<b>807</b>	<b>1.07%</b>	<b>74,438</b>	<b>98.93%</b>	<b>75,245</b>	<b>100.00%</b>

**INJURY CRASHES**

PASSENGER CARS	694	2.72%	24,797	97.28%	25,491	77.94%
LIGHT TRUCKS	229	4.04%	5,436	95.96%	5,665	17.32%
LARGE TRUCKS	46	5.98%	723	94.02%	769	2.35%
BUSES	0	0.00%	168	100.00%	168	0.51%
MOTORCYCLES	56	10.79%	463	89.21%	519	1.59%
ALL OTHERS	7	7.53%	86	92.47%	93	0.28%
<b>TOTAL</b>	<b>1,032</b>	<b>3.16%</b>	<b>31,673</b>	<b>96.84%</b>	<b>32,705</b>	<b>100.00%</b>

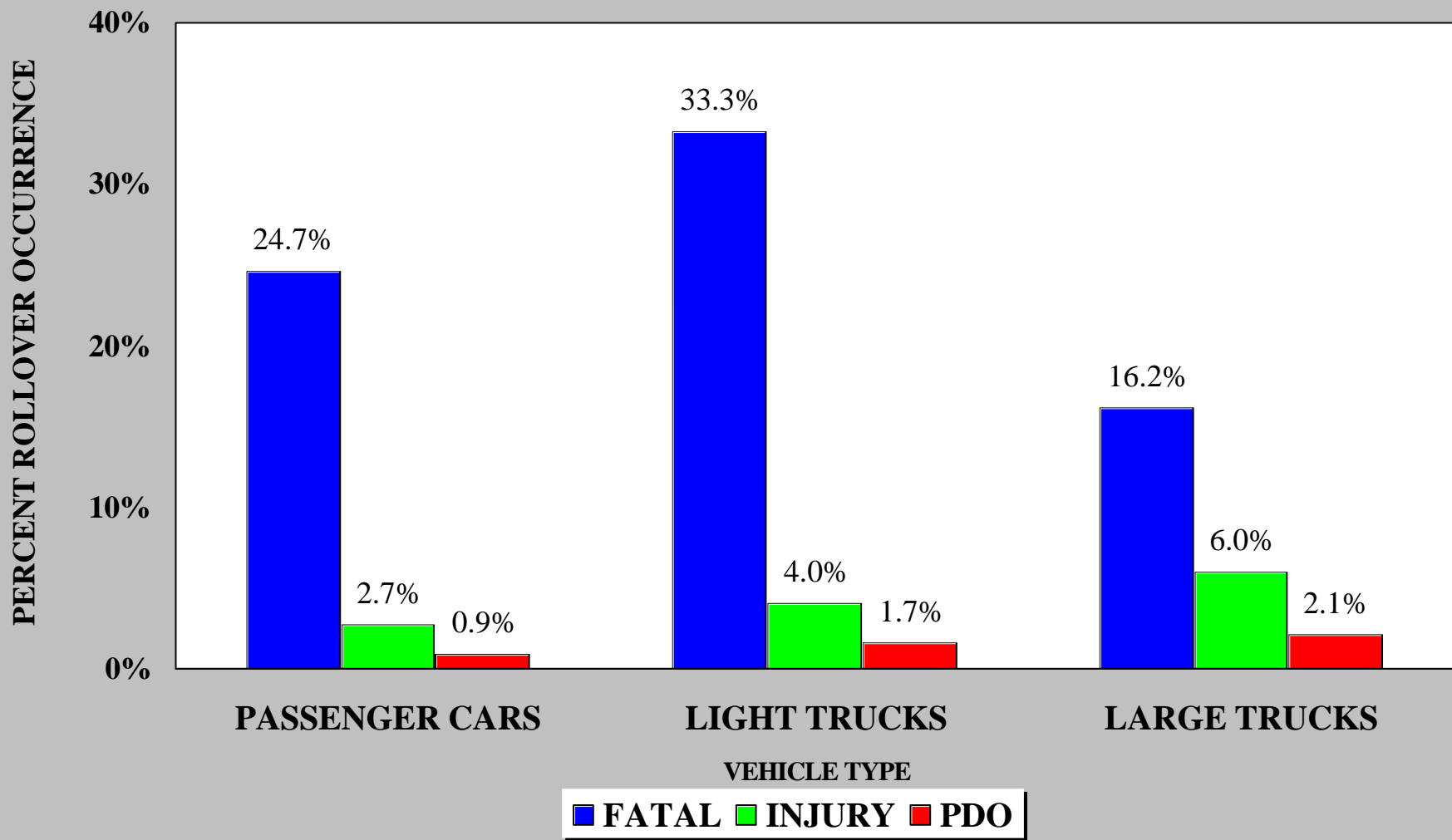
**FATAL CRASHES**

PASSENGER CARS	75	24.67%	229	75.33%	304	68.47%
LIGHT TRUCKS	28	33.33%	56	66.67%	84	18.92%
LARGE TRUCKS	6	16.22%	31	83.78%	37	8.33%
BUSES	0	0.00%	5	100.00%	5	1.13%
MOTORCYCLES	0	0.00%	12	100.00%	12	2.70%
ALL OTHERS	0	0.00%	2	100.00%	2	0.45%
<b>TOTAL</b>	<b>109</b>	<b>24.55%</b>	<b>335</b>	<b>75.45%</b>	<b>444</b>	<b>100.00%</b>

**ALL CRASHES**

PASSENGER CARS	1,269	1.53%	81,602	98.47%	82,871	76.45%
LIGHT TRUCKS	492	2.47%	19,409	97.53%	19,901	18.36%
LARGE TRUCKS	113	3.03%	3,612	96.97%	3,725	3.44%
BUSES	0	0.00%	786	100.00%	786	0.73%
MOTORCYCLES	65	9.62%	611	90.38%	676	0.62%
ALL OTHERS	9	2.07%	426	97.93%	435	0.40%
<b>TOTAL</b>	<b>1,948</b>	<b>1.80%</b>	<b>106,446</b>	<b>98.20%</b>	<b>108,394</b>	<b>100.00%</b>

**PERCENT ROLLOVER OCCURRENCE  
BY VEHICLE TYPE AND CRASH SEVERITY**



**TOTAL TRUCKS INVOLVED IN CRASHES BY TYPE  
1996 THRU 1998**

<b>TRUCK CRASHES</b>	<b>1996 TOTAL VEHICLES</b>	<b>1997 TOTAL VEHICLES</b>	<b>1998 TOTAL VEHICLES</b>
SINGLE UNIT TRUCK	1,191	1,321	1,879
TRUCK WITH ONE TRAILER	1,603	1,584	1,498
TRUCK WITH TWO TRAILERS	118	114	130
TRUCK WITH THREE TRAILERS	14	17	27
<b>TOTAL TRUCK CRASHES</b>	<b>2,926</b>	<b>3,036</b>	<b>3,534</b>

**\* DOES NOT INCLUDE BUSES, MOTOR HOMES, FIRE FIGHTING VEHICLES, OR OTHER VEHICLE CLASSIFICATIONS THAT MAY TYPICALLY MEET NGA REQUIREMENTS.**

**MOTORCYCLE CRASH TOTALS BY SEVERITY AND COUNTY  
1996 THRU 1998**

COUNTY	1996				1997				1998			
	INJURY CRASHES	TOTAL INJURIES	FATAL CRASHES	TOTAL FATALITIES	INJURY CRASHES	TOTAL INJURIES	FATAL CRASHES	TOTAL FATALITIES	INJURY CRASHES	TOTAL INJURIES	FATAL CRASHES	TOTAL FATALITIES
CARSON	11	14	1	1	10	11	1	1	10	11	0	0
CHURCHILL	8	11	0	0	3	3	0	0	7	9	0	0
CLARK	352	406	8	9	351	414	16	16	367	426	11	12
DOUGLAS	8	11	0	0	7	8	1	1	7	9	1	1
ELKO	7	8	0	0	4	4	0	0	4	6	0	0
ESMERALDA	1	1	0	0	2	2	0	0	1	1	0	0
EUREKA	3	5	0	0	0	0	0	0	0	0	0	0
HUMBOLDT	3	4	0	0	6	7	0	0	2	2	0	0
LANDER	0	0	0	0	1	1	0	0	0	0	0	0
LINCOLN	2	2	0	0	1	1	0	0	1	1	0	0
LYON	5	6	0	0	3	5	0	0	6	10	0	0
MINERAL	0	0	0	0	1	1	0	0	0	0	0	0
NYE	8	9	1	1	8	10	0	0	8	12	0	0
PERSHING	1	1	0	0	1	1	0	0	0	0	0	0
STOREY	8	8	0	0	1	1	0	0	2	3	0	0
WASHOE	89	104	4	4	85	98	5	7	71	84	0	0
WHITE PINE	2	6	3	3	3	4	0	0	3	3	0	0
<b>TOTAL</b>	<b>508</b>	<b>596</b>	<b>17</b>	<b>18</b>	<b>487</b>	<b>571</b>	<b>23</b>	<b>25</b>	<b>489</b>	<b>577</b>	<b>12</b>	<b>13</b>