

TRENDS

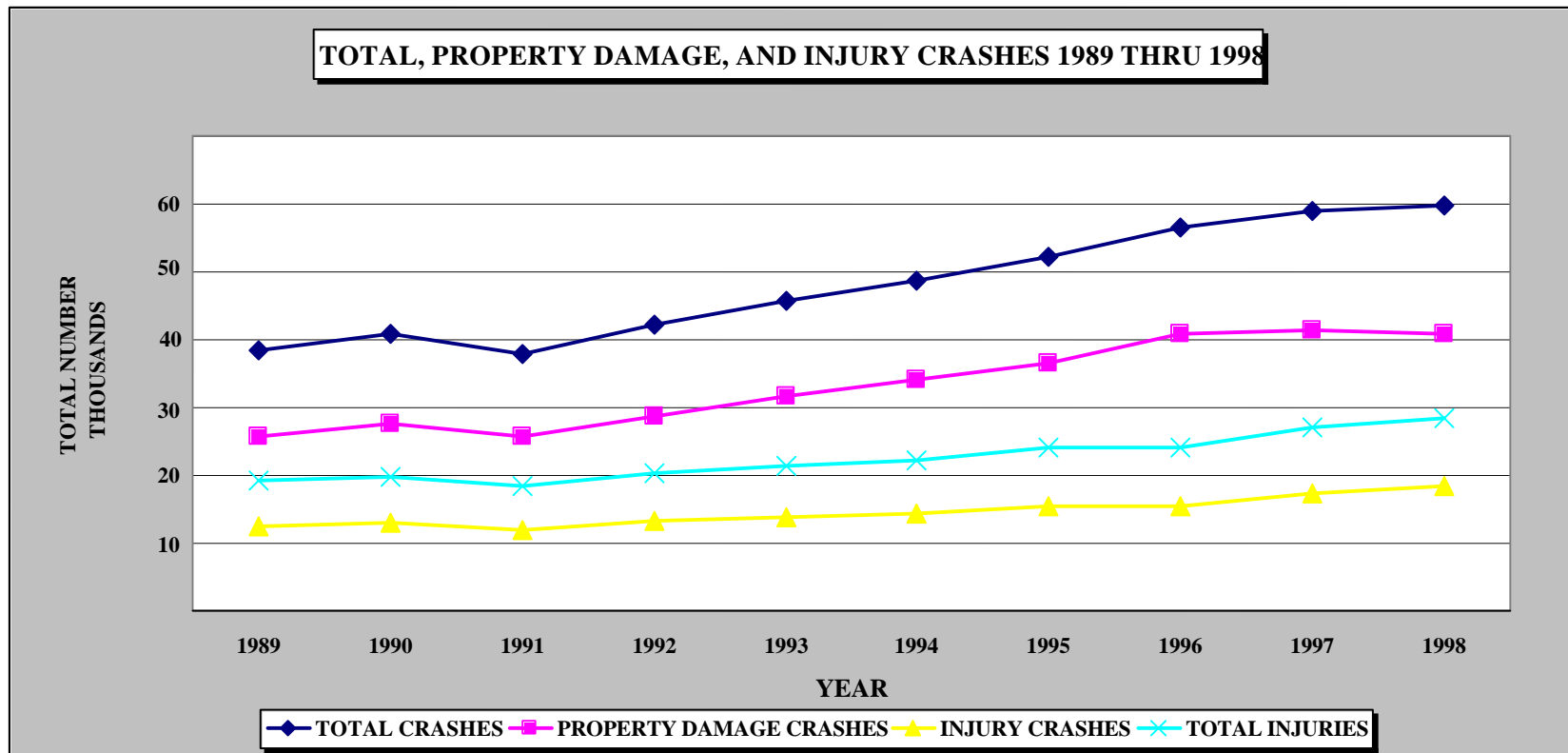
This section presents a series of data displays, which identify trends in motor vehicle crashes by using historical data back to 1988. Trends displayed include crash rates and annual vehicle miles driven, fatal rates for Nevada v. Nation, comparisons of annual crash rates v. Population growth, fatal crash rate over the past 10 years, construction zone crash rates for the past 10 years, and crash types over the past 3 years.

1998 SUMMARY ANALYSIS

- ◆ In the past 10 years the total annual vehicle miles in Nevada has increased 72.0% while the fatal crash rate has decreased by 33.6% and the injury crash rate decreased by 14.5%.
- ◆ During the past three years the total annual vehicle miles in Nevada has increased by 5%, while the fatal crash rate has decreased by 9.4% and the injury rate increased by 14.4%. The national fatal crash rate decreased by 4.5% and the injury crash rate decreased by 7.6%.
- ◆ From 1989 to 1998 Nevada's population increased 55.2% while its annual total crashes increased by 55.2% (fatal crashes increased by 14.1%).
- ◆ In the past ten years construction zone crashes have fluctuated between 823 in 1989 to 1427 in 1998.
- ◆ From 1996 through 1998 rear end collisions accounted for 34.2% of all traffic crashes in Nevada. The next major crash type in the three year period was angle collisions, which accounted for 15.4%.

TEN YEAR TRENDS TOTAL, PROPERTY DAMAGE, AND INJURY CRASHES 1989 THRU 1998

	1989	1990	1991	1992	1993	1994	1995	1996	1997	1998
TOTAL CRASHES	38,474	40,821	37,840	42,250	45,580	48,763	52,233	56,482	58,970	59,726
PROPERTY DAMAGE CRASHES	25,631	27,662	25,555	28,763	31,555	34,044	36,584	40,776	41,420	40,924
INJURY CRASHES	12,567	12,859	12,024	13,260	13,791	14,447	15,372	15,391	17,228	18,487
TOTAL INJURIES	19,293	19,663	18,326	20,265	21,264	22,256	24,005	24,164	27,075	28,400



TOTAL INJURIES NUMBERS DO NOT REFLECT ANY FATALITY DATA.

CRASH RATES AND ANNUAL VEHICLE MILES

CRASH RATES PER 100 MILLION VEHICLE MILES FOR FATAL INJURY AND TOTAL CRASHES IN NEVADA

YEAR	FATAL CRASHES		INJURY CRASHES		TOTAL CRASHES		TOTAL ANNUAL VEHICLE MILES (MILLIONS)
	CRASHES	RATES	CRASHES	RATES	CRASHES	RATES	
1985	227	2.94	11,475	148.87	30,581	396.74	7,708
1986	203	2.52	9,848	122.11	31,576	391.52	8,065
1987	239	2.80	10,509	122.98	33,236	388.95	8,545
1988	256	2.81	11,299	124.01	35,881	393.82	9,111
1989	276	2.89	12,567	131.51	38,474	402.62	9,556
1990	300	2.95	12,562	123.47	39,881	391.99	10,174
1991	261	2.48	12,019	114.37	37,828	359.96	10,509
1992	227	2.08	13,260	121.60	42,249	387.43	10,905
1993	234	2.01	13,791	118.38	45,580	391.25	11,649
1994	272	2.09	14,447	110.97	48,763	374.57	13,018
1995	277	1.98	15,372	109.99	52,233	373.74	13,976
1996	315	2.01	15,391	98.31	56,482	360.79	15,655**
1997	322	1.97	17,228	105.52	58,970	361.18	16,327
1998	315	1.92	18,487	112.48	59,726	363.39	16,436

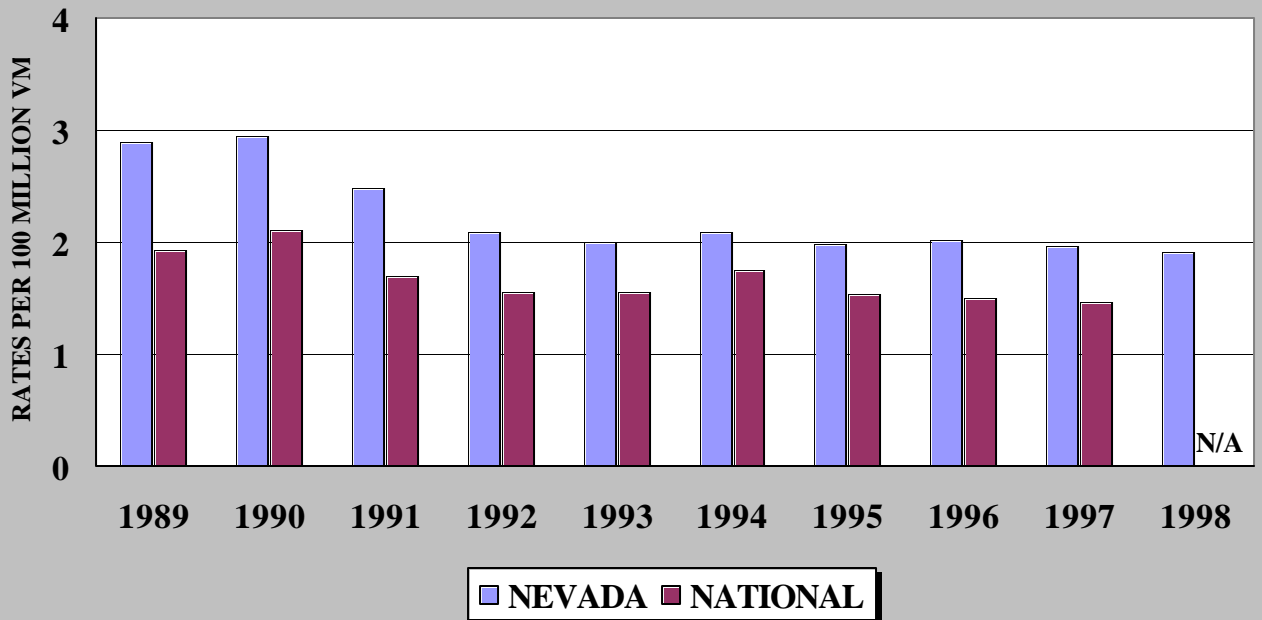
COMPARISON OF NEVADA AND NATIONAL CRASH RATES FOR FATAL AND INJURY CRASHES

YEAR	FATAL CRASHES CRASH RATES		*TOTAL FATALITIES			INJURY CRASHES CRASH RATES	
	NEVADA	NATIONAL	NEVADA RANKING #	NEVADA RATE	NATIONAL RATE	NEVADA	NATIONAL
1985	2.94	2.21	5	3.36	2.50	148.87	124.48
1986	2.52	2.23	14	2.89	2.50	122.11	125.00
1987	2.80	2.15	7	3.07	2.40	122.98	122.60
1988	2.81	2.08	5	3.14	2.30	124.01	119.21
1989	2.89	1.93	2	3.22	2.20	131.51	113.67
1990	2.95	2.10	1	3.37	2.10	123.47	113.00
1991	2.48	1.70	2	2.84	1.90	114.37	112.27
1992	2.08	1.56	7	2.33	1.70	121.60	101.76
1993	2.01	1.56	8	2.26	1.70	118.38	98.95
1994	2.09	1.75	5	2.27	1.70	110.97	103.51
1995	1.98	1.54	10	2.24	1.70	109.99	102.54
1996	2.01	1.50	2	2.22	1.69	98.31	97.12
1997	1.97	1.47	9	2.13	1.60	105.52	94.74
1998	1.92	N/A	N/A	2.20	N/A	112.48	N/A

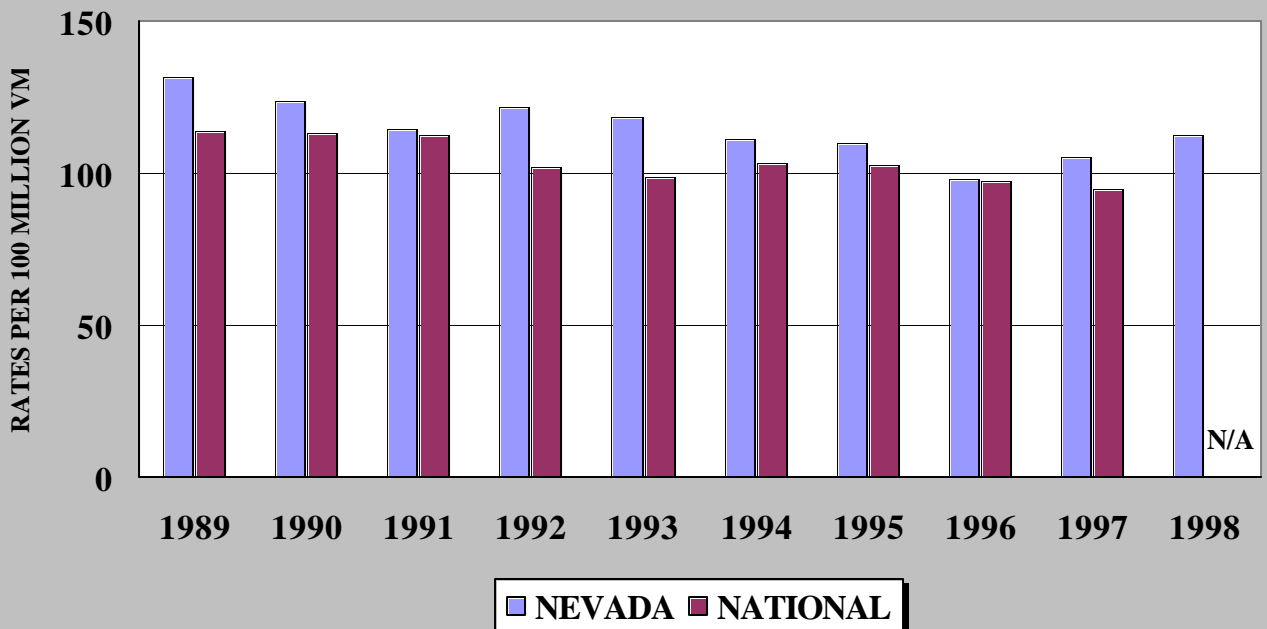
*Rankings are based on the national highway traffic safety facts book

**1996 AVM's were revised and reflect the changes made in the method of calculating the annual vehicle miles. N/A data not available at this time.

FATAL CRASH RATES NEVADA VS NATIONAL



INJURY CRASH RATES NEVADA VS NATIONAL



COMPARISONS OF ANNUAL VEHICLE MILES, TOTAL CRASHES, FATAL CRASHES, & POPULATION
1989 THROUGH 1998

YEAR	AVM	AVM %CHANGE	POPULATION	POPULATION %CHANGE	TOTAL CRASHES	TOTAL CRASHES %CHANGE	INJURY CRASHES	INJURY CRASHES %CHANGE	FATAL CRASHES	FATAL CRASHES %CHANGE
1989	9,556,000,000	0.00%	1,195,700	0.00%	38,474	0.00%	12,567	0.00%	276	0.00%
1990	10,000,000,000	4.65%	1,201,833	0.51%	39,881	3.66%	12,562	-0.04%	300	8.70%
1991	10,509,000,000	9.97%	1,296,340	8.42%	37,828	-1.68%	12,019	-4.36%	260	-5.80%
1992	10,905,200,000	14.12%	1,343,940	12.40%	42,250	9.81%	13,260	5.51%	227	-17.75%
1993	11,649,900,000	21.91%	1,398,760	16.98%	45,580	18.47%	13,791	9.74%	234	-15.22%
1994	13,018,500,000	36.23%	1,494,230	24.97%	48,763	26.74%	14,447	14.96%	272	-1.45%
1995	13,975,900,000	46.25%	1,582,390	32.34%	52,233	35.76%	15,372	22.32%	277	0.36%
1996	15,655,000,000	63.82%	1,688,140	41.18%	56,437	46.69%	15,391	22.47%	315	14.13%
1997	16,326,900,000	70.85%	1,779,850	48.85%	58,970	53.27%	17,226	37.07%	322	16.67%
1998	16,436,000,000	72.00%	1,855,790	55.21%	59,726	55.24%	18,487	47.11%	315	14.13%

1989 BASE YEAR STATISTICS

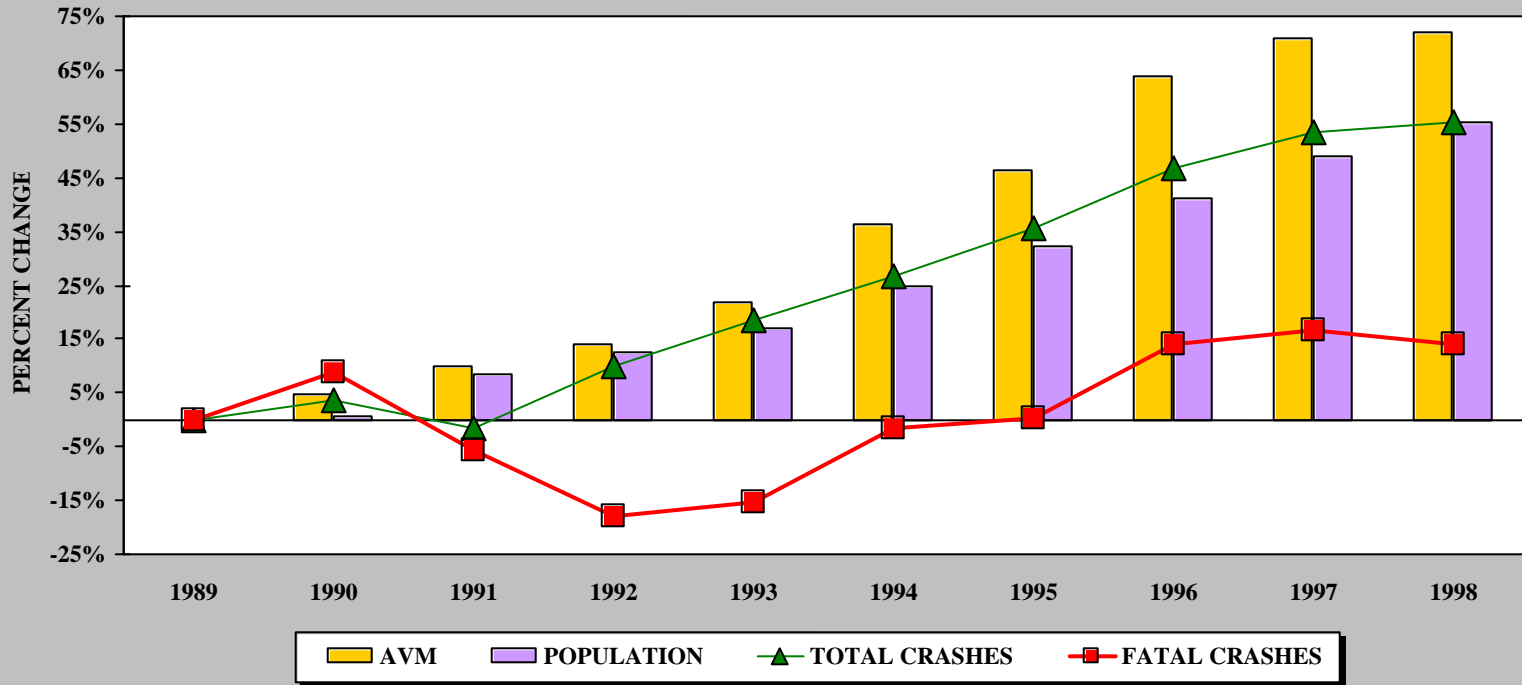
POPULATION	1,195,700
TOTAL CRASHES	38,474
TOTAL FATAL CRASHES	276
AVM	9,556,000,000

1998 STATISTICS

POPULATION	1,855,790
TOTAL CRASHES	59,726
TOTAL FATAL CRASHES	315
AVM	16,436,000,000



**COMPARISONS OF ANNUAL VEHICLE MILES, TOTAL CRASHES, FATAL CRASHES
AND STATEWIDE POPULATION
1989 THRU 1998**



1989 BASE YEAR STATISTICS

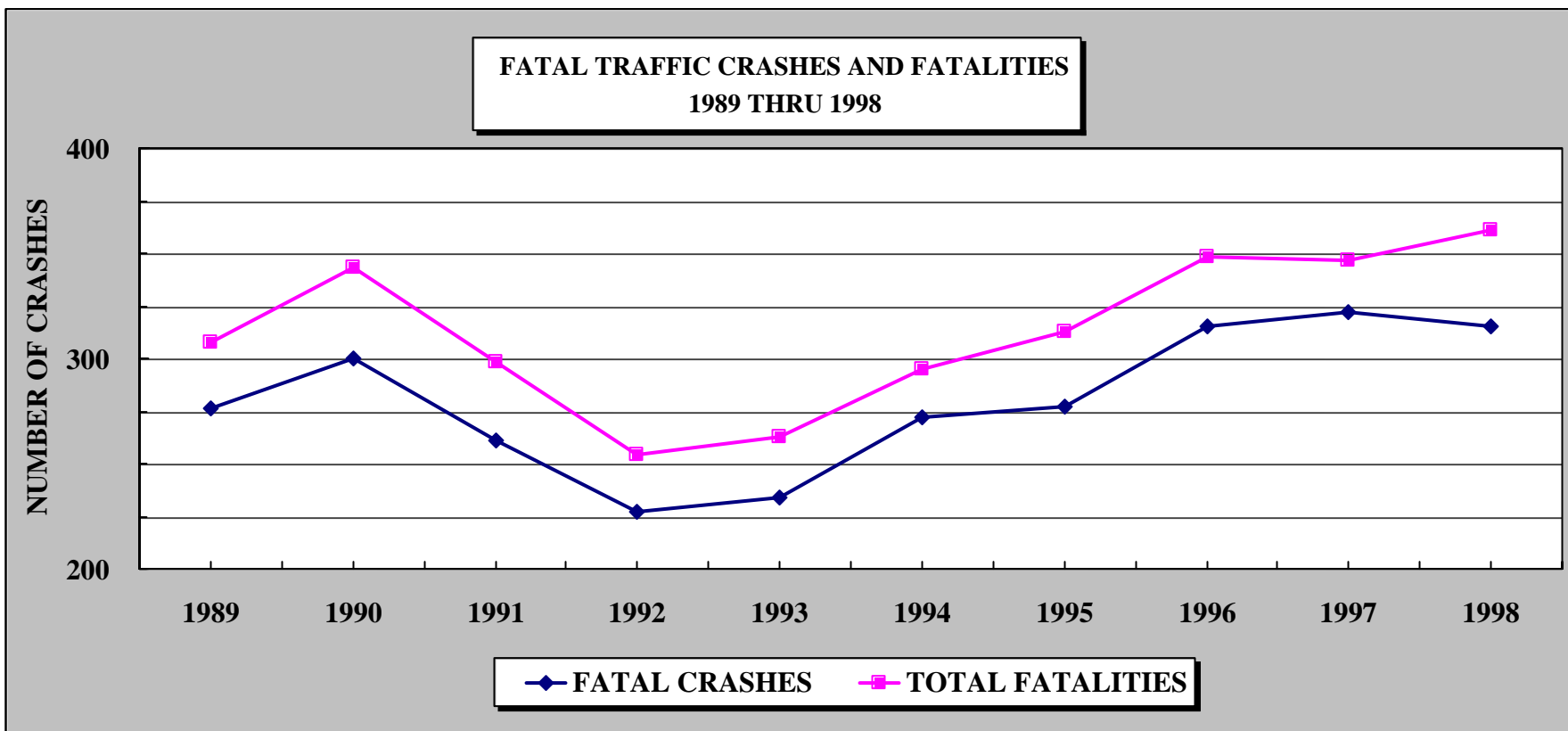
POPULATION	1,195,700
TOTAL CRASHES	38,474
TOTAL FATAL CRASHES	276
AVM	9,556,000,000

1998 STATISTICS

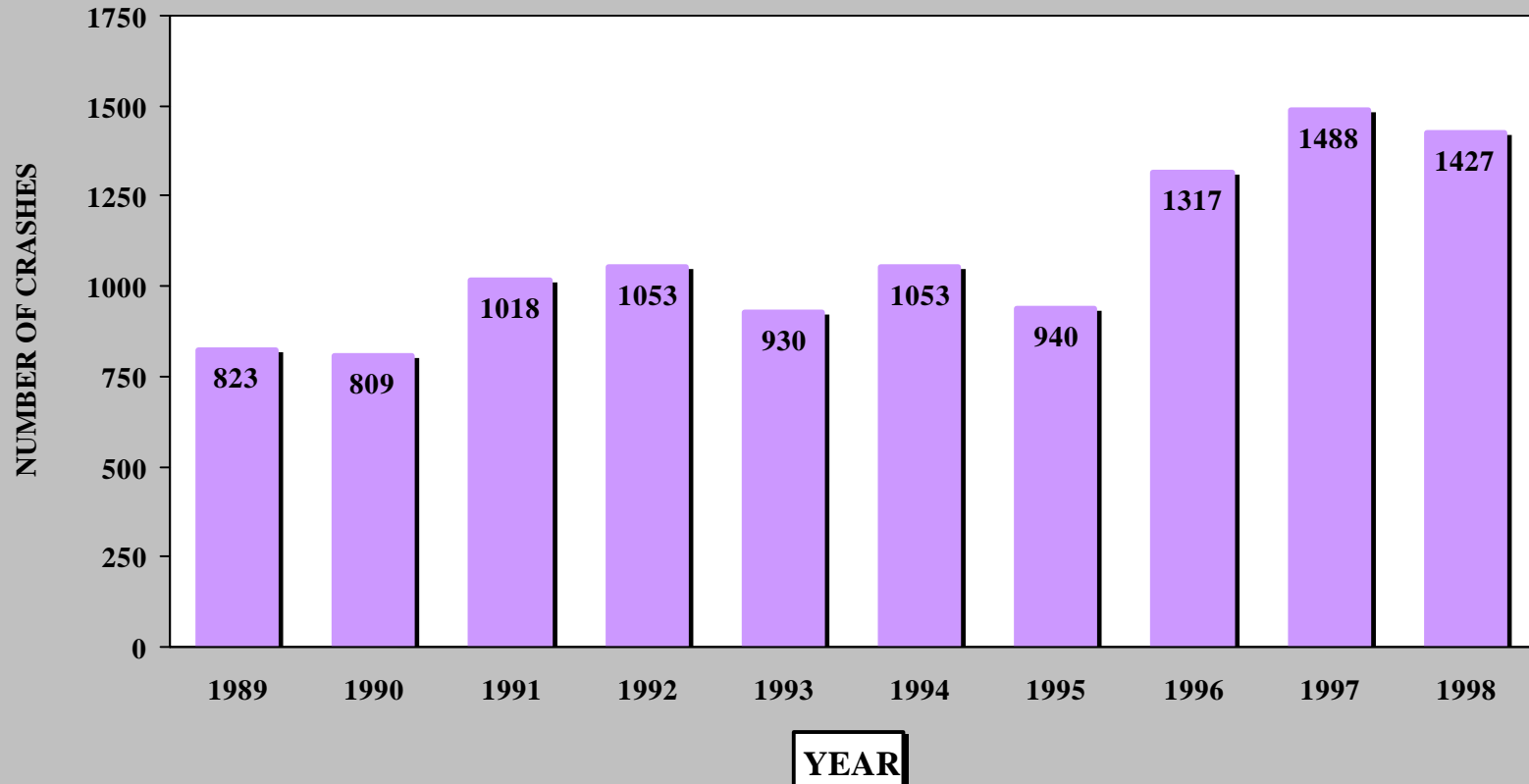
POPULATION	1,855,790
TOTAL CRASHES	59,726
TOTAL FATAL CRASHES	315
AVM	16,436,000,000

**TEN YEAR TRENDS
FATAL TRAFFIC CRASHES AND FATALITIES
1989 THRU 1998**

	1989	1990	1991	1992	1993	1994	1995	1996	1997	1998
FATAL CRASHES	276	300	261	227	234	272	277	315	322	315
TOTAL FATALITIES	308	343	298	254	263	295	313	348	347	361



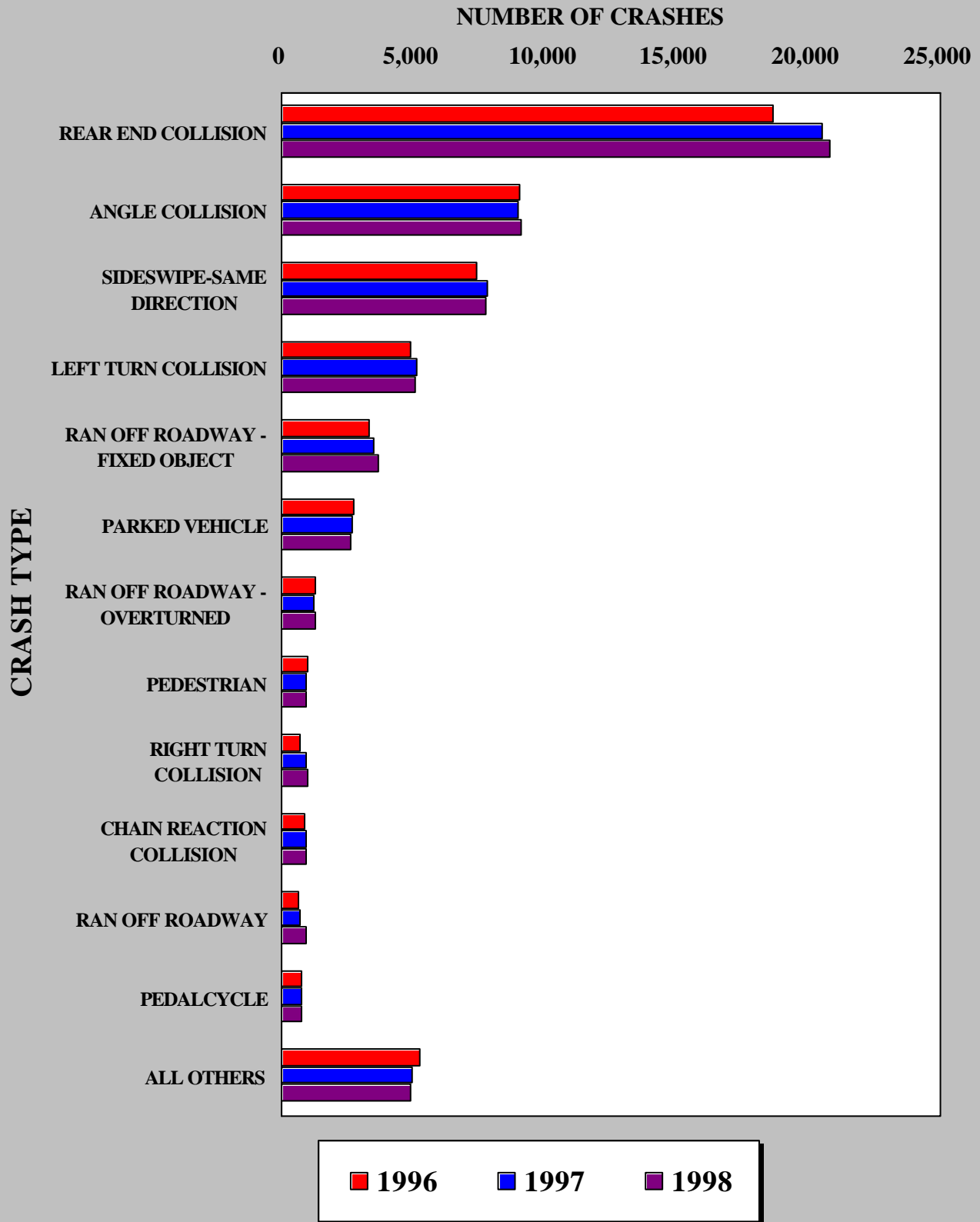
TEN YEAR TREND OF CONTRUCTION ZONE CRASHES



**TOTAL NUMBER OF CRASHES BY CRASH TYPE AND YEAR
1996 THRU 1998**

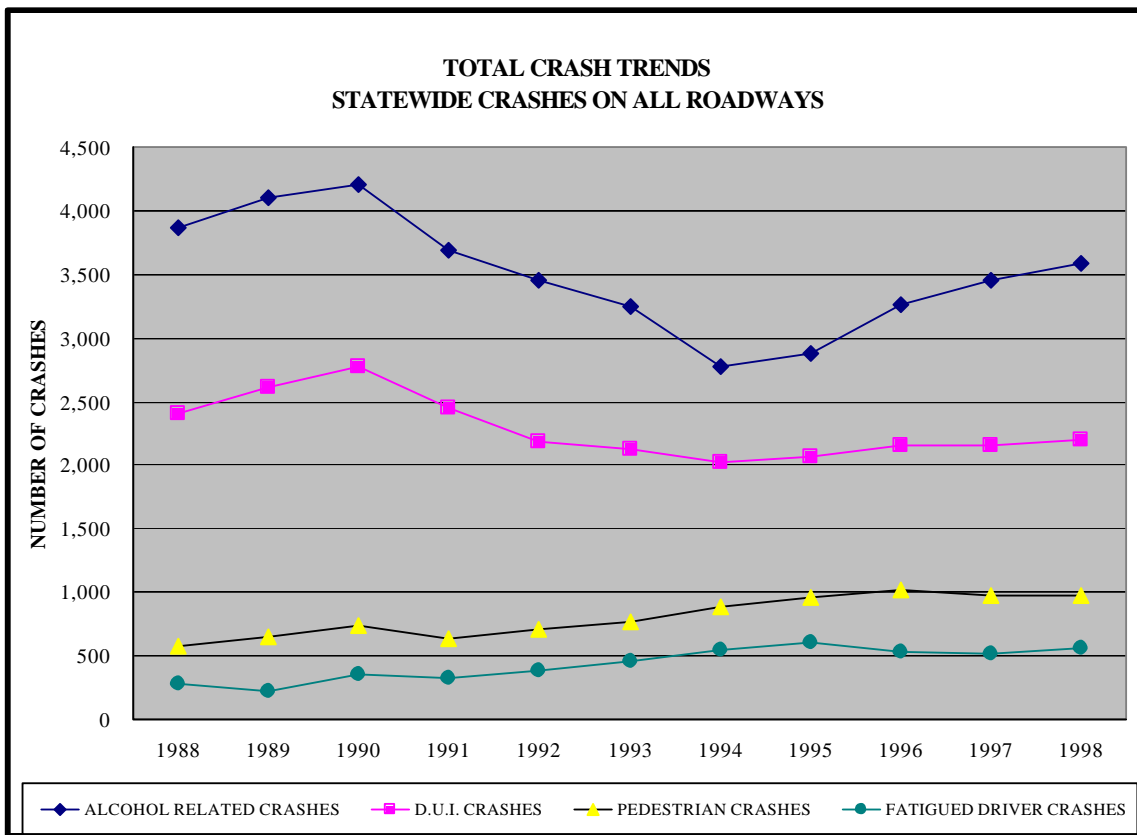
TYPE OF CRASH	1996	1997	1998
REAR END COLLISION	18,642	20,510	20,831
ANGLE COLLISION	9,034	8,946	9,072
SIDESWIPE-SAME DIRECTION	7,393	7,780	7,778
LEFT TURN COLLISION	4,870	5,152	5,044
RAN OFF ROADWAY - FIXED OBJECT	3,350	3,477	3,672
PARKED VEHICLE	2,729	2,663	2,637
RAN OFF ROADWAY - OVERTURNED	1,287	1,228	1,307
PEDESTRIAN	976	930	910
RIGHT TURN COLLISION	718	936	982
CHAIN REACTION COLLISION	846	946	960
RAN OFF ROADWAY	623	701	922
PEDALCYCLE	776	773	736
OUT OF CONTROL VEHICLE	740	670	730
OBJECT THROWN FROM OTHER VEHICLE	638	536	377
RAN OFF ROAD STRUCK MEDIAN FIXED OBJECT	570	475	472
ANIMAL	652	572	622
SIDESWIPE-OPPOSITE DIRECTION	279	369	314
RAN OFF ROADWAY-OTHER COMBINATIONS	367	325	338
OVERTURNED IN ROADWAY	404	314	316
OBJECT IN ROADWAY	254	281	319
HIT MEDIAN AND OVERTURNED	299	257	268
OTHER - NON COLLISION	179	258	141
HEAD ON COLLISION	177	132	155
RAN OFF ROAD INTO MEDIAN	154	158	165
RAN OFF ROADWAY - EMBANKMENT	72	106	110
OTHER - NON MOTOR VEHICLE	52	60	172
DOWN EMBANKMENT OR CLIFF	101	102	35
TRAILING VEHICLE DISCONNECTS	83	55	53
PROTRUDING PART OF VEHICLE	47	44	62
RAN OFF ROADWAY - CULVERT OR ABUTMENT	5	57	64
JACK-KNIFE IN ROADWAY	55	36	30
OTHER TYPE COLLISION	24	33	45
UNKNOWN - NON COLLISION	12	39	41
HIT PARKED VEHICLE OFF ROADWAY	24	32	17
UNKNOWN COLLISION	12	9	16
HIT RAILROAD CROSSING GATE ACROSS ROAD	11	3	8
TRAIN	5	1	2
UNKNOWN - NON MOTOR VEHICLE	3	0	3
RAN OFF ROADWAY INTO RIVER	3	3	0
RAN OFF ROADWAY AT RAILROAD CROSSING	2	1	0
TOTAL	56,468	58,970	59,726

TOP TEN CRASH TYPES BY YEAR 1996 THRU 1998



STATEWIDE TOTALS BY YEAR 1988 THRU 1998

YEAR	*TOTAL ALCOHOL RELATED CRASHES	TOTAL DUI CRASHES	TOTAL PEDESTRIAN CRASHES	FATIGUED DRIVER CRASHES
1988	3,866	2,400	582	283
1989	4,095	2,613	651	225
1990	4,203	2,772	737	347
1991	3,689	2,446	633	329
1992	3,459	2,188	704	377
1993	3,253	2,126	771	457
1994	2,774	2,015	881	543
1995	2,871	2,063	962	600
1996	3,262	2,156	1,020	529
1997	3,454	2,148	972	517
1998	3,591	2,204	970	559



THESE TOTALS ARE BASED ON THE PRIMARY CONTRIBUTING FACTOR.

*TOTAL ALCOHOL RELATED CRASHES ARE BASED ON DRIVER 1 OR PEDESTRIAN