

ALCOHOL & DRUG RELATED CRASHES

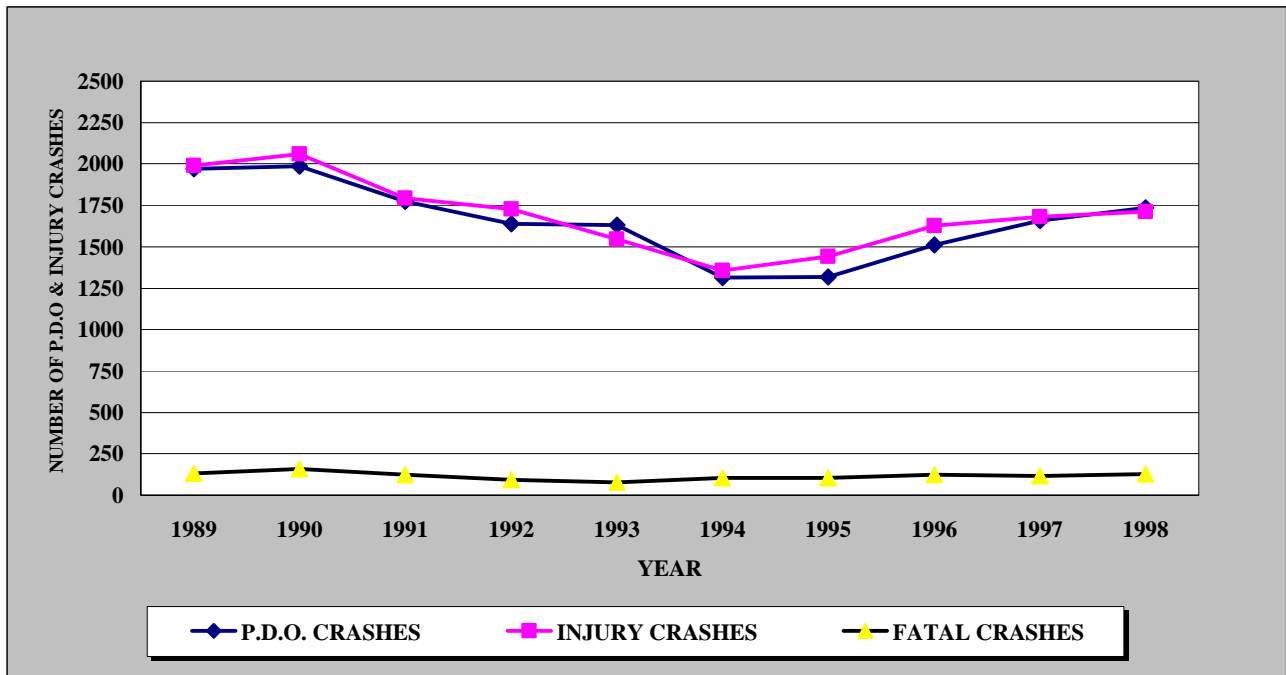
This section presents a series of data displays which identify 10-year trends of alcohol related crashes: alcohol related crashes by type; totals by county and year; alcohol related injury and fatal crashes by county, day of week, and times of day; drug related crashes; and driver and pedestrian alcohol related crashes by severity.

1998 SUMMARY ANALYSIS

- ◆ In the last three years 405 people were killed and 8,071 people were injured in 10,289 crashes involving alcohol.
- ◆ In 1998 Lyon County has the highest percentage of alcohol related crashes with 11.2%. The lowest percentage of crashes involving alcohol was White Pine County with 4.6%.
- ◆ The County with the highest percentage of alcohol related fatal crashes were Humboldt County with 60.0%.
- ◆ There were 146 people killed in alcohol related crashes in 1998.
- ◆ Statewide, 6:00 PM to 12:00 AM are the most fatal hours for alcohol related crashes. Fifty percent or 63 of the 126 alcohol related fatal crashes occurred during those hours.
- ◆ Statewide, Saturday & Sunday are the most likely days for fatal alcohol related crashes to occur. Forty-seven or 37% of these crashes occurred on those days.
- ◆ Fifty seven percent of the pedestrians killed in 1998 had used alcohol.

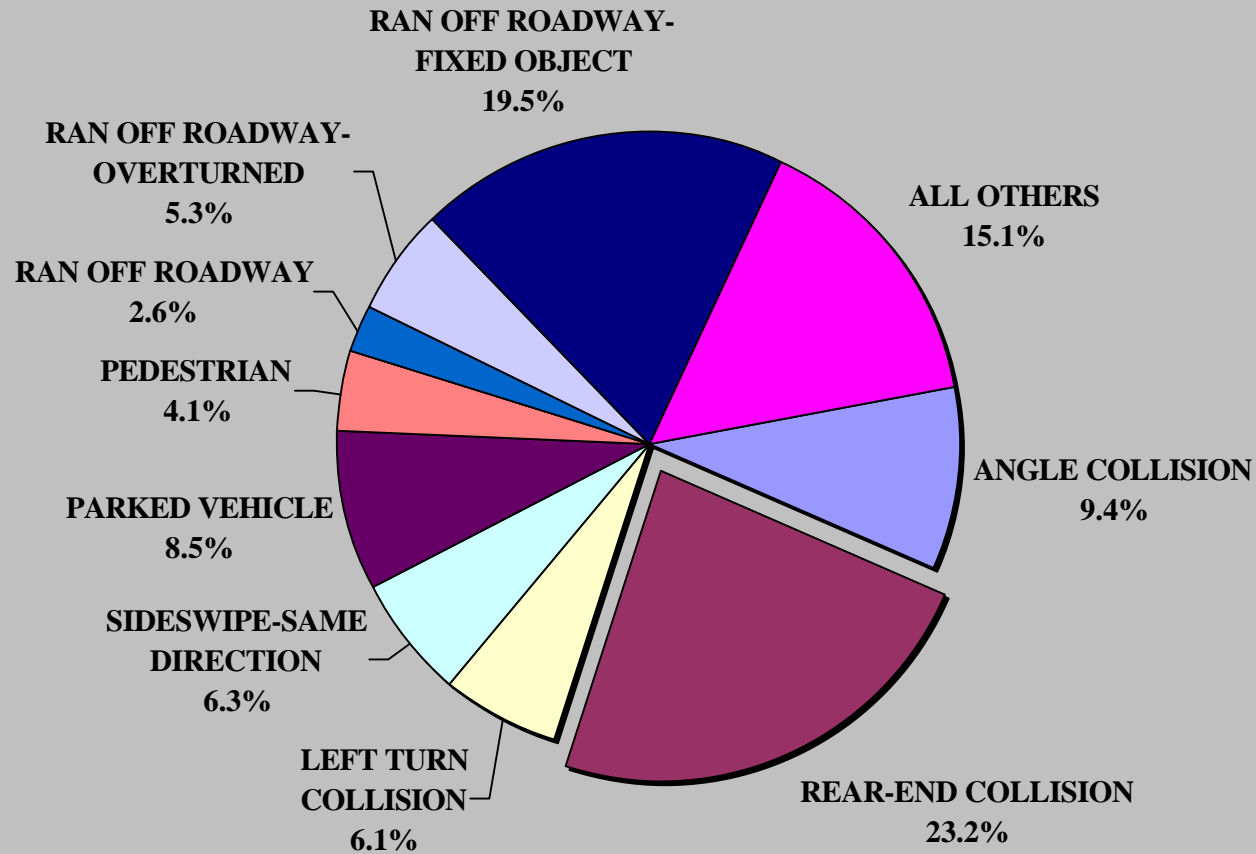
ALCOHOL RELATED CRASHES 1989 THRU 1998

YEAR	PROPERTY DAMAGE ONLY CRASHES	INJURY CRASHES	FATAL CRASHES	TOTAL CRASHES	TOTAL INJURIES	TOTAL FATALITIES
1989	1972	1991	132	4095	3180	153
1990	1985	2060	158	4203	3272	181
1991	1772	1793	124	3689	2840	144
1992	1639	1727	93	3459	2717	103
1993	1630	1544	79	3253	2554	89
1994	1312	1357	105	2774	2247	114
1995	1319	1443	106	2868	2315	119
1996	1511	1628	123	3262	2628	135
1997	1657	1681	116	3454	2747	124
1998	1736	1711	126	3573	2696	146



THESE CRASHES ARE BASED ON DRIVER 1 AND/OR PEDESTRIAN ALCOHOL INVOLVEMENT.

ALCOHOL RELATED CRASHES BY TYPE 1998



1996-1998 STATEWIDE ALCOHOL INVOLVED CRASHES
TOTALS BY COUNTY AND YEAR

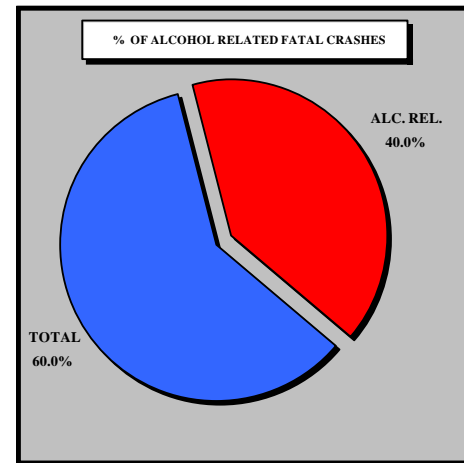
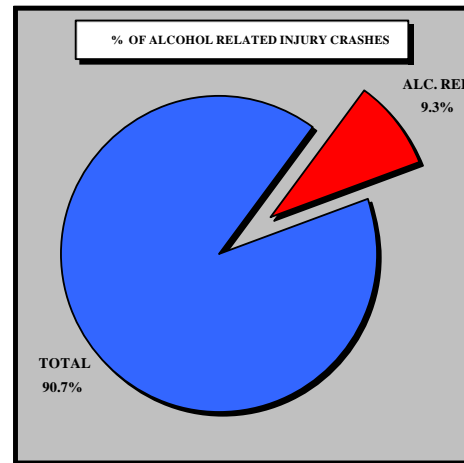
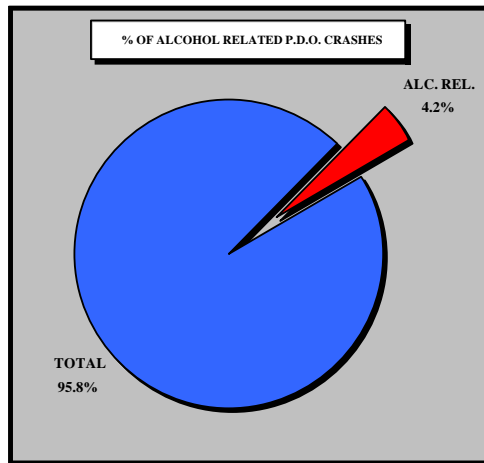
COUNTY	1996						1997						1998					
	TOTAL CRASHES	TOTAL P.D.O. CRASHES	TOTAL INJURY. CRASHES	TOTAL INJURIES	TOTAL FATAL CRASHES	TOTAL FATALITIES	TOTAL CRASHES	TOTAL P.D.O. CRASHES	TOTAL INJURY. CRASHES	TOTAL INJURIES	TOTAL FATAL CRASHES	TOTAL FATALITIES	TOTAL CRASHES	TOTAL P.D.O. CRASHES	TOTAL INJURY. CRASHES	TOTAL INJURIES	TOTAL FATAL CRASHES	TOTAL FATALITIES
CARSON	116	74	41	53	1	1	81	53	25	43	3	3	72	41	31	36	0	0
CHURCHILL	72	42	29	38	1	1	55	30	23	35	2	2	51	25	22	36	4	5
CLARK	2,022	871	1,073	1,823	78	88	2,307	1,047	1,199	1,996	61	64	2,487	1,149	1,249	2,024	89	99
DOUGLAS	89	47	39	51	3	3	81	44	32	56	5	5	69	44	23	39	2	2
ELKO	121	64	49	72	8	8	99	61	32	45	6	7	85	49	33	47	3	3
ESMERALDA	0	0	0	0	0	0	9	2	6	6	1	1	7	1	4	7	2	2
EUREKA	10	5	4	6	1	1	16	3	10	20	3	3	11	8	2	3	1	1
HUMBOLDT	49	32	13	22	4	4	42	20	18	29	4	4	39	25	11	15	3	10
LANDER	11	4	6	8	1	1	21	10	9	12	2	3	14	6	6	11	2	2
LINCOLN	23	9	11	27	3	3	11	5	4	9	2	2	11	3	6	11	2	3
LYON	57	30	25	39	2	2	36	17	17	25	2	2	53	23	27	40	3	3
MINERAL	14	10	3	3	1	1	12	7	3	10	2	2	15	11	4	5	0	0
NYE	44	18	22	27	4	4	47	20	23	38	4	6	53	28	23	35	2	2
PERSHING	14	4	9	14	1	1	10	2	5	14	3	3	19	9	8	11	2	2
STOREY	12	3	9	10	0	0	17	9	8	10	0	0	7	3	4	6	0	0
WASHOE	589	288	288	421	13	15	582	308	260	390	14	15	564	304	250	361	10	10
WHITE PINE	19	10	7	14	2	2	28	19	7	9	2	2	16	7	8	9	1	2
TOTAL	3,262	1,511	1,628	2,628	123	135	3,454	1,657	1,681	2,747	116	124	3,573	1,736	1,711	2,696	126	146

THESE CRASHES ARE BASED ON DRIVER 1 AND/OR PEDESTRIAN ALCOHOL INVOLVEMENT.

1998 ALCOHOL RELATED CRASHES BY COUNTY

COUNTY	TOTAL CRASHES	TOTAL ALC. REL. CRASHES	% OF TOTAL CRASHES	TOTAL P.D.O. CRASHES	TOTAL ALC. REL. P.D.O. CRASHES	% OF TOTAL P.D.O. CRASHES	TOTAL INJURY CRASHES	TOTAL ALC. REL. INJURY CRASHES	ALC REL. % OF INJURY CRASHES	TOTAL FATAL CRASHES	TOTAL ALC. REL. FATAL CRASHES	ALC REL. % OF FATAL CRASHES	TOTAL INJURIES	TOTAL ALC. REL. INJURIES	% OF TOTAL INJURIES	TOTAL FATALITIES	TOTAL ALC. REL. FATALITIES	% OF TOTAL FATALITIES
CARSON	1,221	72	5.90%	931	41	4.40%	288	31	10.76%	2	0	0.00%	388	36	9.28%	2	0	0.00%
CHURCHILL	527	51	9.68%	358	25	6.98%	155	22	14.19%	14	4	28.57%	250	36	14.40%	18	5	27.78%
CLARK	43,435	2,487	5.73%	29,111	1,149	3.95%	14,141	1,249	8.83%	183	89	48.63%	21,883	2,024	9.25%	203	99	48.77%
DOUGLAS	821	69	8.40%	627	44	7.02%	188	23	12.23%	6	2	33.33%	305	39	12.79%	6	2	33.33%
ELKO	1,291	85	6.58%	950	49	5.16%	317	33	10.41%	24	3	12.50%	540	47	8.70%	26	3	11.54%
ESMERALDA	64	7	10.94%	37	1	2.70%	22	4	18.18%	5	2	40.00%	43	7	16.28%	8	2	25.00%
EUREKA	147	11	7.48%	105	8	7.62%	39	2	5.13%	3	1	33.33%	67	3	4.48%	3	1	33.33%
HUMBOLDT	519	39	7.51%	406	25	6.16%	108	11	10.19%	5	3	60.00%	152	15	9.87%	12	10	83.33%
LANDER	156	14	8.97%	110	6	5.45%	40	6	15.00%	6	2	33.33%	65	11	16.92%	6	2	33.33%
LINCOLN	125	11	8.80%	88	3	3.41%	33	6	18.18%	4	2	50.00%	52	11	21.15%	5	3	60.00%
LYON	474	53	11.18%	319	23	7.21%	148	27	18.24%	7	3	42.86%	220	40	18.18%	8	3	37.50%
MINERAL	144	15	10.42%	106	11	10.38%	35	4	11.43%	3	0	0.00%	58	5	8.62%	4	0	0.00%
NYE	507	53	10.45%	352	28	7.95%	149	23	15.44%	6	2	33.33%	257	35	13.62%	10	2	20.00%
PERSHING	199	19	9.55%	128	9	7.03%	65	8	12.31%	6	2	33.33%	111	11	9.91%	7	2	28.57%
STOREY	82	7	8.54%	69	3	4.35%	13	4	30.77%	0	0	0.00%	18	6	33.33%	0	0	0.00%
WASHOE	9,669	564	5.83%	6,967	304	4.36%	2,665	250	9.38%	37	10	27.03%	3,857	361	9.36%	38	10	26.32%
WHITE PINE	345	16	4.64%	260	7	2.69%	81	8	9.88%	4	1	25.00%	134	9	6.72%	5	2	40.00%
TOTAL	59,726	3,573	5.98%	40,924	1,736	4.24%	18,487	1,711	9.26%	315	126	40.00%	28,400	2,696	9.49%	361	146	40.44%

THESE ALCOHOL RELATED CRASH TOTALS ARE BASED ON ANY DRIVER 1 OR PEDESTRIAN ALCOHOL INVOLVEMENT.



ALCOHOL INVOLVED INJURY AND FATAL CRASHES
BY COUNTY, DAY AND TIME

STATEWIDE

COUNTY	12:AM TO 2:59AM		3:00AM TO 5:59AM		6:00AM TO 8:59AM		9:00AM TO 11:59AM		12:00PM TO 2:59PM		3:00PM TO 5:59PM		6:00PM TO 8:59PM		9:00PM TO 11:59PM	
	INJURY	FATAL	INJURY	FATAL	INJURY	FATAL	INJURY	FATAL	INJURY	FATAL	INJURY	FATAL	INJURY	FATAL	INJURY	FATAL
CARSON	2		2				1		3		9		7		7	
CHURCHILL	6	1	3				1				3	1	4	1	5	1
CLARK	206	21	166	8	89	7	49	1	71	3	161	8	247	18	260	23
DOUGLAS	3		3		1		2		2		3		5		4	2
ELKO	4		4		2		4		3		3		4	2	9	1
ESMERALDA			1							1			1		2	1
EUREKA					1				1					1		
HUMBOLDT	1		2		2					1	3			1	3	1
LANDER			1						1	1	1		1	1	2	
LINCOLN	1		1						2		1	1	1			1
LYON	4	1			1		2				5	2	10		5	
MINERAL			1						1						2	
NYE	5		1				1		2	1	1		8		6	
PERSHING	1		1		1	1			1		1		2		1	1
STOREY	1												1		2	
WASHOE	42	2	20	1	13		10	1	15		47		49	4	54	2
WHITE PINE			1		2				2		2			1	1	
TOTAL	276	25	207	9	112	8	69	3	104	7	240	12	340	29	363	33

SUNDAY

COUNTY	12:AM TO 2:59AM		3:00AM TO 5:59AM		6:00AM TO 8:59AM		9:00AM TO 11:59AM		12:00PM TO 2:59PM		3:00PM TO 5:59PM		6:00PM TO 8:59PM		9:00PM TO 11:59PM	
	INJURY	FATAL	INJURY	FATAL	INJURY	FATAL	INJURY	FATAL	INJURY	FATAL	INJURY	FATAL	INJURY	FATAL	INJURY	FATAL
CARSON							1		1				1		1	
CHURCHILL	3						1						1			
CLARK	45	2	32	1	18	3	8		14	2	31	4	45	2	46	2
DOUGLAS			2						1		1		1			1
ELKO	2		2				1									1
ESMERALDA															1	
EUREKA																
HUMBOLDT					1						1				1	
LANDER													1			
LINCOLN												1				
LYON													2			
MINERAL															1	
NYE							1						1		2	
PERSHING	1					1					1					
STOREY																
WASHOE	8		7	1	3		1		1		10		1	2	7	
WHITE PINE																
TOTAL	59	2	43	2	22	4	12	1	17	2	44	5	53	4	59	4

**ALCOHOL INVOLVED INJURY AND FATAL CRASHES
BY COUNTY, DAY AND TIME**

MONDAY

COUNTY	12:AM TO 2:59AM		3:00AM TO 5:59AM		6:00AM TO 8:59AM		9:00AM TO 11:59AM		12:00PM TO 2:59PM		3:00PM TO 5:59PM		6:00PM TO 8:59PM		9:00PM TO 11:59PM	
	INJURY	FATAL	INJURY	FATAL	INJURY	FATAL	INJURY	FATAL	INJURY	FATAL	INJURY	FATAL	INJURY	FATAL	INJURY	FATAL
CARSON									1		1					
CHURCHILL	1															
CLARK	20		18		11		4		5	1	16	2	27	4	29	3
DOUGLAS	1										1		1			
ELKO			1								1				1	
ESMERALDA															1	
EUREKA																
HUMBOLDT											1					
LANDER															1	
LINCOLN																
LYON							1						1			
MINERAL									1							
NYE																
PERSHING													1			
STOREY	1															
WASHOE	3		2		2		3		1		11		10		6	1
WHITE PINE					1											
TOTAL	26		21		14		8		8	1	31	2	40	4	38	4

TUESDAY

COUNTY	12:AM TO 2:59AM		3:00AM TO 5:59AM		6:00AM TO 8:59AM		9:00AM TO 11:59AM		12:00PM TO 2:59PM		3:00PM TO 5:59PM		6:00PM TO 8:59PM		9:00PM TO 11:59PM	
	INJURY	FATAL	INJURY	FATAL	INJURY	FATAL	INJURY	FATAL	INJURY	FATAL	INJURY	FATAL	INJURY	FATAL	INJURY	FATAL
CARSON											1		1			
CHURCHILL	1														1	
CLARK	25	1	18	2	8	1	13	1	8		23		28	7	23	6
DOUGLAS	1															1
ELKO					1						1			1		
ESMERALDA			1													
EUREKA					1											
HUMBOLDT			1													
LANDER										1						
LINCOLN	1										1		1			
LYON	3	1														
MINERAL																
NYE											1		1			
PERSHING																
STOREY																
WASHOE	3				2				1		4		4		7	1
WHITE PINE																
TOTAL	34	2	20	2	12	1	13	1	9	1	31		35	8	31	8

ALCOHOL INVOLVED INJURY AND FATAL CRASHES
BY COUNTY, DAY AND TIME

WEDNESDAY

COUNTY	12:AM TO 2:59AM		3:00AM TO 5:59AM		6:00AM TO 8:59AM		9:00AM TO 11:59AM		12:00PM TO 2:59PM		3:00PM TO 5:59PM		6:00PM TO 8:59PM		9:00PM TO 11:59PM		
	INJURY	FATAL	INJURY	FATAL	INJURY	FATAL	INJURY	FATAL	INJURY	FATAL	INJURY	FATAL	INJURY	FATAL	INJURY	FATAL	
CARSON														1		1	
CHURCHILL			1													1	1
CLARK	19	3	17		11	2	3		9		13		24	1	23	1	
DOUGLAS			1								1						
ELKO	1															1	
ESMERALDA																	
EUREKA									1								
HUMBOLDT																	
LANDER																	
LINCOLN																	
LYON											1		1				
MINERAL			1														
NYE													3		1		
PERSHING			1														
STOREY													1				
WASHOE	4	1	1		1				1		6		6		5		
WHITE PINE														1			
TOTAL	24	4	22		12	2	3		11		20	1	36	2	32	2	

THURSDAY

COUNTY	12:AM TO 2:59AM		3:00AM TO 5:59AM		6:00AM TO 8:59AM		9:00AM TO 11:59AM		12:00PM TO 2:59PM		3:00PM TO 5:59PM		6:00PM TO 8:59PM		9:00PM TO 11:59PM		
	INJURY	FATAL	INJURY	FATAL	INJURY	FATAL	INJURY	FATAL	INJURY	FATAL	INJURY	FATAL	INJURY	FATAL	INJURY	FATAL	
CARSON	1										3		1		2		
CHURCHILL			1								2				3		
CLARK	32	6	24	1	7	1	3		10		16	1	31	1	41	2	
DOUGLAS							1						1		2		
ELKO									2				1	1	2		
ESMERALDA													1				
EUREKA																	
HUMBOLDT	1									1	1						
LANDER									1		1						
LINCOLN																	
LYON	1				1		1				1	1			2		
MINERAL																	
NYE	1								1						1		
PERSHING																	
STOREY															1		
WASHOE	6	1	1		2				5		4		9	1	11		
WHITE PINE																	
TOTAL	42	7	26	1	10	1	5		19	1	28	2	44	3	65	2	

**ALCOHOL INVOLVED INJURY AND FATAL CRASHES
BY COUNTY, DAY AND TIME**

FRIDAY

COUNTY	12:AM TO 2:59AM		3:00AM TO 5:59AM		6:00AM TO 8:59AM		9:00AM TO 11:59AM		12:00PM TO 2:59PM		3:00PM TO 5:59PM		6:00PM TO 8:59PM		9:00PM TO 11:59PM	
	INJURY	FATAL	INJURY	FATAL	INJURY	FATAL	INJURY	FATAL	INJURY	FATAL	INJURY	FATAL	INJURY	FATAL	INJURY	FATAL
CARSON									1		4		2		1	
CHURCHILL		1											2	1		
CLARK	27	2	17		9		5		10		27		45	1	56	6
DOUGLAS	1								1				2		1	
ELKO					1		1		1				1			
ESMERALDA																
EUREKA																
HUMBOLDT													1		2	1
LANDER													1		1	
LINCOLN			1													1
LYON											2		2		2	
MINERAL															1	
NYE			1										3		2	
PERSHING									1						1	
STOREY															1	
WASHOE	3		4		1			1	2		8		9	1	10	
WHITE PINE			1		1						1					
TOTAL	31	3	24		12		6	1	16		42		66	5	78	8

SATURDAY

COUNTY	12:AM TO 2:59AM		3:00AM TO 5:59AM		6:00AM TO 8:59AM		9:00AM TO 11:59AM		12:00PM TO 2:59PM		3:00PM TO 5:59PM		6:00PM TO 8:59PM		9:00PM TO 11:59PM	
	INJURY	FATAL	INJURY	FATAL	INJURY	FATAL	INJURY	FATAL	INJURY	FATAL	INJURY	FATAL	INJURY	FATAL	INJURY	FATAL
CARSON	1		2										1		2	
CHURCHILL	1		1								1	1	1			
CLARK	38	7	40	4	25		13		15		35	1	47	2	42	3
DOUGLAS					1		1								1	
ELKO	1		1				2				1		2		5	
ESMERALDA										1						1
EUREKA													1			
HUMBOLDT			1		1											
LANDER			1													
LINCOLN									2							
LYON											2		4		1	
MINERAL																
NYE	4								1	1						
PERSHING					1								1			1
STOREY																
WASHOE	15		5		2		6		4		4		10		8	
WHITE PINE									2		1				1	
TOTAL	60	7	51	4	30		22		24	2	44	2	66	3	60	5

1996-1998 STATEWIDE DRUG INVOLVED CRASHES
TOTALS BY COUNTY AND YEAR

COUNTY	1996						1997						1998					
	TOTAL CRASHES	TOTAL P.D.O. CRASHES	TOTAL INJURY CRASHES	TOTAL INJURIES	TOTAL FATAL CRASHES	TOTAL FATALITIES	TOTAL CRASHES	TOTAL P.D.O. CRASHES	TOTAL INJURY. CRASHES	TOTAL INJURIES	TOTAL FATAL CRASHES	TOTAL FATALITIES	TOTAL CRASHES	TOTAL P.D.O. CRASHES	TOTAL INJURY. CRASHES	TOTAL INJURIES	TOTAL FATAL CRASHES	TOTAL FATALITIES
CARSON	3	1	1	3	1	1	2	1			1	1	4	2	2	4		
CHURCHILL							4	1	3	5								
CLARK	92	35	43	67	14	14	113	37	62	100	14	15	100	55	37	65	8	9
DOUGLAS	3	2	1	1			2		1	1	1	1	8	4	4	7		
ELKO	3	3					4	3	1	1			3	1	2	4		
ESMERALDA																		
EUREKA	1	1																
HUMBOLDT	4	3	1	3			2	1	1	2			2	1	1	1		
LANDER							1		1	1								
LINCOLN							2		1	3	1	1	1		1	2		
LYON	2	1	1	2			2	1		3	1	1						
MINERAL	2		1	2	1	1	3	1	1	5	1	2						
NYE							2		2	3			2		2	4		
PERSHING	2		1	3	1	1												
STOREY																		
WASHOE	23	11	10	24	2	3	24	8	12	21	4	4	25	21	3	8	1	1
WHITE PINE							2	1	1	1								
TOTAL	135	57	59	105	19	20	163	54	86	146	23	25	145	84	52	95	9	10

NOT ALL DRIVERS IN CRASHES ARE TESTED FOR DRUG USE.

TOTALS ARE BASED ON SAFETY ENGINEERING'S RECORDS OF DRIVER 1'S CONDITION AND/OR PEDESTRIAN DRUG CONDITION.

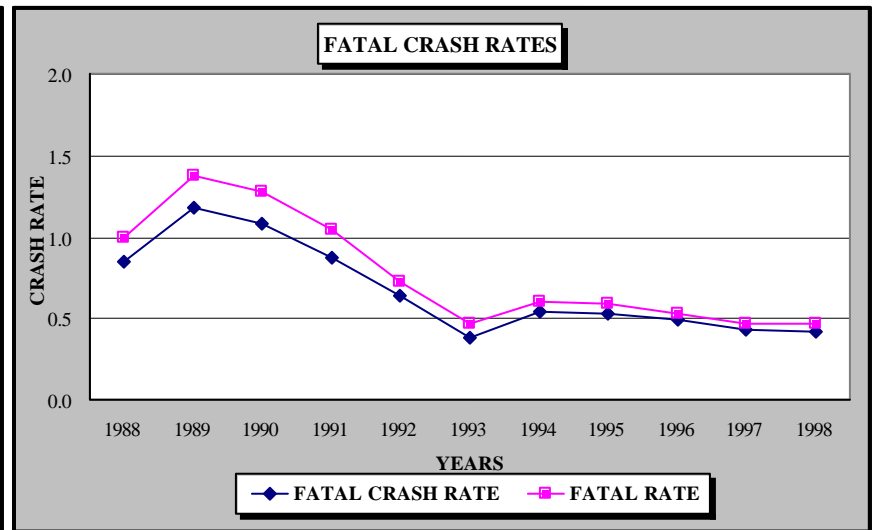
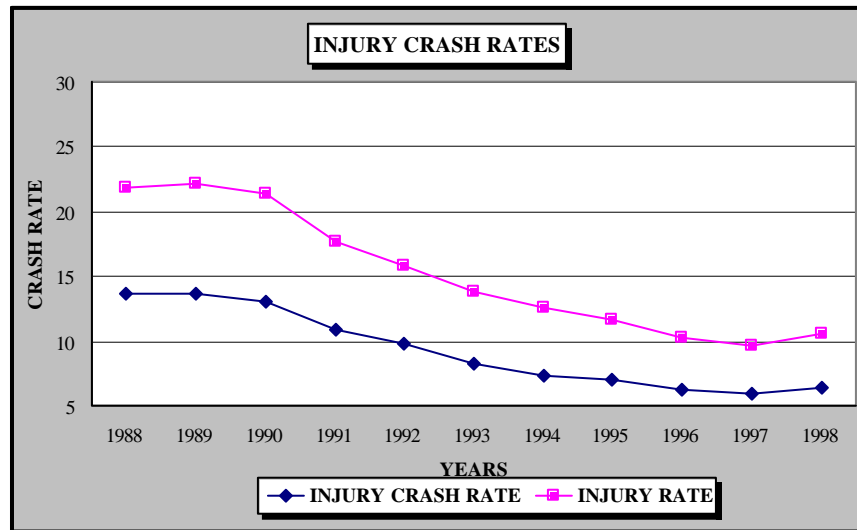
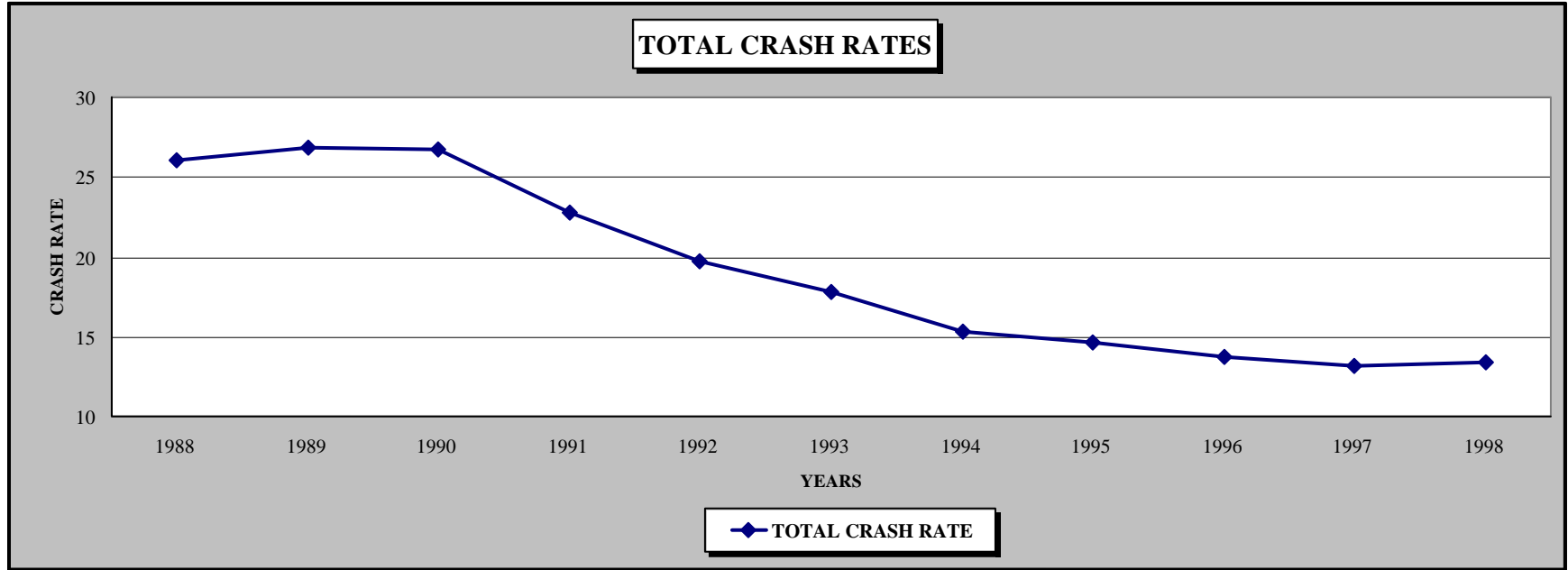
D.U.I. CRASH TOTALS AND RATES BY SEVERITY 1988 THRU 1998

YEAR	PROPERTY DAMAGE ONLY CRASHES	P.D.O. CRASH RATE	INJURY CRASHES	INJURY CRASH RATE	FATAL CRASHES	FATAL CRASH RATE	TOTAL CRASHES	TOTAL CRASH RATE	TOTAL INJURIES	TOTAL INJURIES RATE	TOTAL FATALITIES	TOTAL FATALITIES RATE
1988	1044	11.46	1249	13.71	77	0.85	2370	26.01	1992	21.86	91	1.00
1989	1144	11.97	1309	13.70	113	1.18	2566	26.85	2113	22.11	131	1.37
1990	1281	12.59	1327	13.04	110	1.08	2718	26.71	2177	21.39	130	1.28
1991	1163	11.07	1144	10.89	91	0.87	2398	22.82	1850	17.60	110	1.05
1992	1019	9.34	1064	9.76	69	0.63	2152	19.73	1731	15.87	79	0.72
1993	1061	9.11	966	8.29	45	0.39	2072	17.79	1616	13.87	54	0.46
1994	961	7.38	955	7.34	71	0.55	1987	15.26	1636	12.57	79	0.61
1995	982	7.03	987	7.06	74	0.53	2041	14.60	1624	11.62	83	0.59
1996	1093	6.98	985	6.29	76	0.49	2154	13.76	1616	10.32	83	0.53
1997	1107	6.78	970	5.94	71	0.43	2143	13.13	1581	9.68	77	0.47
1998	1074	6.53	1062	6.46	69	0.42	2205	13.42	1723	10.48	76	0.46

THESE CRASHES ARE BASED ON DRIVER 1 DRIVING UNDER THE INFLUENCE.

CRASH RATES PER 100 MILLION VEHICLE MILES.

D.U.I. CRASH RATES 1988 THRU 1998



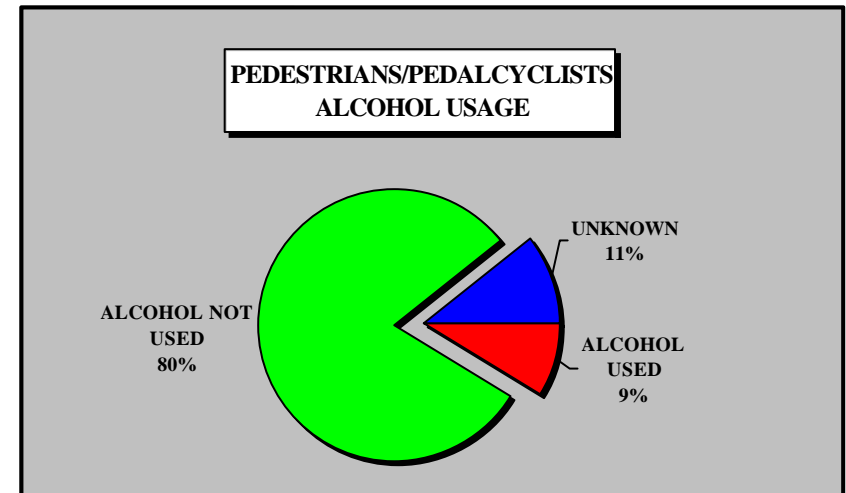
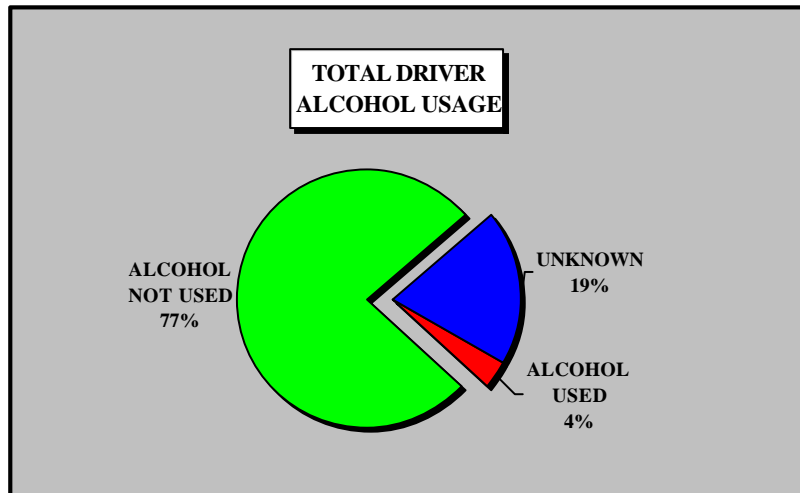
THESE CRASHES ARE BASED ON DRIVER 1 DRIVING UNDER THE INFLUENCE.
CRASH RATES PER 100 MILLION VEHICLE MILES.

**STATEWIDE DRIVER AND PEDESTRIAN ALCOHOL CONDITION
DRIVER CONDITION
1998**

DRIVER CONDITION	DRIVERS IN P.D.O. CRASHES	DRIVERS IN INJURY CRASHES	DRIVERS IN FATAL CRASHES	DRIVERS IN TOTAL. CRASHES
ALCOHOL USED	1,877	1,725	114	3,716
ALCOHOL NOT USED	53,385	27,991	294	81,670
UNKNOWN	17,432	2,616	19	20,067
TOTAL	72,694	32,332	427	105,453

PEDESTRIAN/PEDALCYCLIST CONDITION

PEDESTRIAN/PEDALCYCLIST CONDITION	INJURY CRASHES	FATAL CRASHES	TOTAL CRASHES
ALCOHOL USED	120	28	148
ALCOHOL NOT USED	1,346	17	1,363
UNKNOWN	180	4	184
TOTAL	1,646	49	1,695



DRIVER TOTALS ARE BASED ON DRIVER 1 AND DRIVER 2 CONDITIONS.

PEDESTRIAN TOTALS ARE BASED ON THE 1ST PEDESTRIAN/PEDALCYCLIST INVOLVED IN THE CRASH.

DRIVERS WITH DRUG CONDITIONS ARE NOT INCLUDED IN THESE TOTALS.