

3. Cursor Display

There are four different cursor styles: Hand, Pointer, I, and Cross. The cursor changes appearance depending on its screen location and functionality. These cursors' functions are initiated by clicking on the left mouse button.

3.1. Hand



The cursor appears as a hand when it is over an active link on the web page or tool bars. This is an indication that some action will occur if the left mouse button is clicked.

3.2. Pointer



The cursor appears as a pointer when it is over some form fields or any part of the map when no other command is active (e.g.: zoom or monument select commands). Users can make form selections from drop down lists by clicking the left mouse button when the pointer cursor appears. Clicking the left mouse button over active map features initiates an action. When the left mouse button is clicked over a survey monument when the cursor is a pointer, the Point Reporter page opens and that monument's data is displayed.

3.3. Text Bar

The cursor appears as an "I" when it is over a form field that will accept textual key-ins. Clicking the left mouse button opens the field for data entry. Users can delete existing information or enter new information from the keyboard at the point where the text cursor was placed.

3.4. Cross



The pointer appears as a cross when the select and zoom commands are used to identify an area of the map. Zoom Window and the monument selection commands are the primary commands that use this cursor.

4. Map Legend Display Control

The Map Legend controls feature display in the map. The Map Legend lists all available features for the current map window (depending on the zoom level). Users click on the check marks to turn the features on or off in the map. The legend automatically updates as the zoom level changes and features are turned on or off by the web application (see Display Thresholds – Section 4.3).

4.1. Default Legend Setting

The legend displays the features in Figure 4.1 when the statewide map is displayed. The legend will change depending on the features that are available for display in the map area and at the specified scale.



Figure 4.1 - Legend Settings

4.2. Legend of a Zoomed In Area

The legend automatically updates when the map window changes, and additional features are turned off or on. Figure 4.2 shows an area of Carson City with additional features including survey monuments. In the example, the color filled City Limits feature is unchecked and is not displayed on the map.

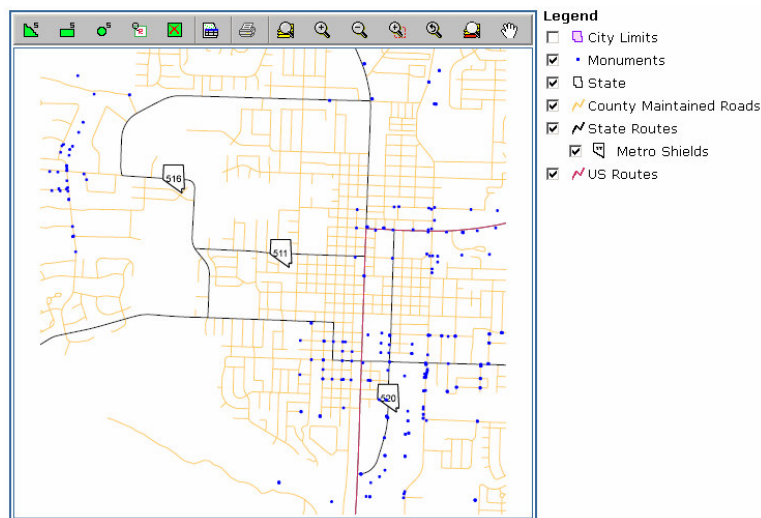


Figure 4.2 - Sample Legend for a Zoomed Area

4.3. Display Thresholds

The term *Display Threshold* describes the automatic process that determines which features will be displayed as the map view changes. To keep the LoIS map from being too cluttered and difficult to read, LoIS Web automatically checks the map extents and updates the map and legend with the features appropriate for that view. Users are not able to change the display threshold settings.

In addition to the Display Thresholds, the legend will not contain entries for features that do not exist on the map extent. For example, if no city limit boundaries exist in the map, then the legend entry for City Limits will be removed.

4.3.1. Features Displayed at All Map Scales

The features listed below will always be displayed unless turned off in the legend or are not part of the visible display area.

- Interstates
- Interstate Shields
- State
- Counties
- U.S. Routes
- State Routes

4.3.2. Features Displayed at Some Map Scales

The features listed below may or may not be displayed, depending on the current map scale. They are turned on automatically as the user modifies the map window.

- County Maintained Roads
- City Limits
- Monuments
- Metro Shields
- US Route Shields
- State Route Shields