

Table of Contents

<u>Section</u>		<u>Page</u>
13.1	SOCIO-ECONOMICS ANALYSIS PROCESS	13.1-1
	Activity No. 1: Initiate Socio-Economic Impact Analysis	13.1-3
	Activity No. 2: Define Affected Area.....	13.1-4
	Activity No. 3: Conduct Data Collection and Research.....	13.1-5
	Activity No. 4: Determine and Analyze Impacts.....	13.1-7
	Activity No. 5: Examine Mitigation Options	13.1-9
	Activity No. 6: Document Socio-Economic Impact and Analysis	13.1-10
	Activity No. 7: Include Mitigation Commitments in Contract Documents	13.1-11
	Activity No. 8: Monitor Mitigation Commitments	13.1-12

List of Figures

<u>Figure</u>	<u>Page</u>
Figure 13.1-A — SOCIO-ECONOMICS ANALYSIS	13.1-2

Chapter 13

SOCIO-ECONOMICS

13.1 SOCIO-ECONOMICS ANALYSIS PROCESS

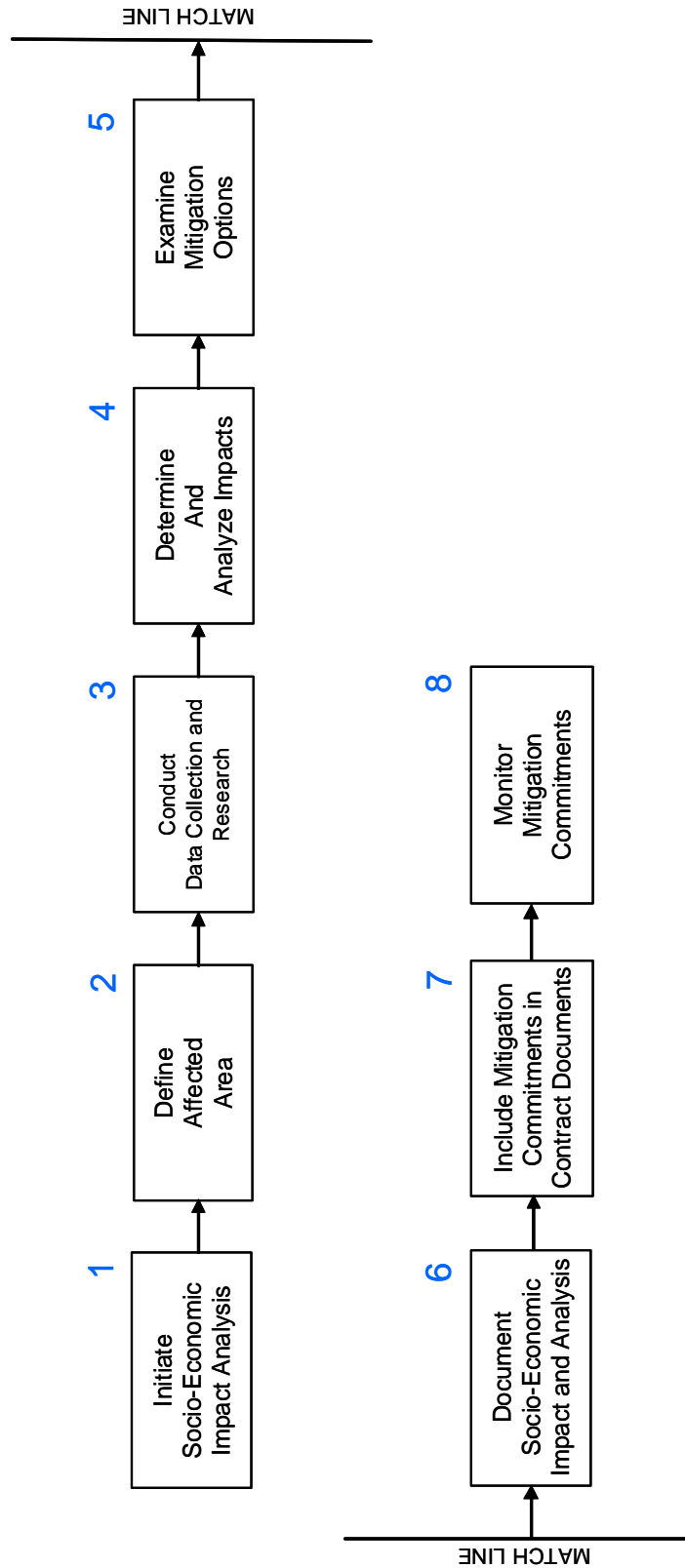


Figure 13.1-A — SOCIO-ECONOMICS ANALYSIS

PROJECT ACTIVITY

Activity Title: Initiate Socio-Economic Impact Analysis

Activity No.: 1

Activity Description:

The Environmental Services Division will monitor proposed projects for potential socio-economic impacts and will provide input into the project purpose and need and the development of project alternatives. Elements that can trigger a socio-economic analysis include:

- population effects/population type (e.g., Native American tribes)
- impacts on neighborhoods or community facilities;
- residential development effects;
- business development effects;
- noise impacts;
- air quality impacts; and
- aesthetic impacts or issues.

Regulations and Guidance

23 USC 109(h) (Consideration of possible adverse economic, social and environmental effects of Federal-aid highway projects)

National Environmental Policy Act of 1969

[23 CFR 771 "Environmental Impact and Related Procedures"](#)

EO 12898 on Environmental Justice (1994)

PROJECT ACTIVITY

Activity Title: Define Affected Area

Activity No.: 2

Activity Description:

The Environmental Services Division will identify the geographic region expected to be affected by the project. For purposes of the socio-economic impact analysis, this will include recognition that the project might have social consequences for communities beyond the immediate project area and that the scope of the socio-economic impact study area may change as more information is collected and alternatives are introduced.

Regulations and Guidance

Community Impact Assessment, A Quick Reference for Transportation, FHWA-PD-96-036, September 1996.

FHWA Environmental Guidebook

[FHWA Technical Advisory T 6640.8A](#)

Community Impact Assessment Website at www.ciatrans.net

PROJECT ACTIVITY

Activity Title: Conduct Data Collection and Research

Activity No.: 3

Activity Description:

The Environmental Services Division will collect data through field surveys, from library sources, on the Internet or from other sources to describe the characteristics of the project location. Examples of pertinent information include:

- transportation data;
- demographic information;
 - + population;
 - + age, gender and ethnic distribution;
 - + special population subgroups (e.g., disabled persons); and
 - + income levels;
- neighborhood boundaries;
- housing;
 - + density,
 - + multi versus single family,
 - + owner versus rental,
 - + occupancy rate, and
 - + condition;
- community facilities;
 - + location and type, and
 - + access to and from;
- public services (e.g., police, fire);

PROJECT ACTIVITY

Activity Title: Conduct Data Collection and Research
(Continued)

Activity No.: 3

Activity Description:

- business;
 - + number,
 - + ownership,
 - + stability, and
 - + number of employees;
- tax base/economy;
 - + unemployment rate,
 - + income distribution, and
 - + stability.

Regulations and Guidance

Community Impact Assessment, A Quick Reference for Transportation, FHWA-PD-96-036,
September 1996.

[FHWA Environmental Guidebook](#)

[FHWA Technical Advisory T 6640.8A](#)

Community Impact Assessment Website at www.ciatrans.net

PROJECT ACTIVITY

Activity Title: Determine and Analyze Impacts

Activity No.: 4

Activity Description:

The Environmental Services Division will examine the anticipated future conditions with the proposed project in comparison to the anticipated conditions without the proposed project to identify impacts (i.e., positive and negative impacts, temporary and long-term impacts, as well as secondary and cumulative effects). The Analyst will consider community goals when identifying impacts, will review and research issues the public perceives as an impact and will consider the magnitude of an issue in determining the appropriate level of analysis. Examples of the impacts to be assessed include:

1. Social Impacts:

- changes in neighborhoods or community cohesion;
- changes in travel patterns and accessibility;
- impacts on school districts, recreation areas, churches, businesses, police and fire protection, etc.;
- impacts on highway and traffic safety and overall public safety;
- social groups benefited or harmed by the proposed project (e.g., elderly, non-drivers, transit-dependent and minority and ethnic groups);
- changes in ethnic or minority employment opportunities;
- disproportionate impacts to any social groups;
- noise impacts or air quality impacts; and
- aesthetic or visual impacts.

2. Economic Impacts:

- impacts on the regional and/or local economy (e.g., effects on development, tax revenues and public expenditures, employment opportunities, accessibility and retail sales);
- impacts on the economic vitality of highway-related businesses and the resulting impact on the local economy;
- impacts on established business districts; and
- joint development opportunities.

3. Relocation Impacts:

- households to be displaced, including family characteristics;
- comparison of available decent, safe and sanitary housing in the area with the housing needs of persons displaced;
- affected neighborhoods, public facilities, non-profit organizations, and families which may require special relocation considerations;

PROJECT ACTIVITY

Activity Title: Determine and Analyze Impacts
(Continued)

Activity No.: 4

Activity Description:

- measures to be taken where existing housing does not meet the needs of the persons displaced; and
- numbers, types and sizes of businesses and farms (see [Chapter 21](#)) to be displaced and availability of sites for relocation, likelihood of relocation and potential impacts caused by displacement or proximity of the highway, if not displaced.

4. Land Use Impacts:

- impacts on development trends and governmental plans and policies on land use and growth,
- consistency with adopted comprehensive development plans, and
- foreseeable secondary impacts of development induced by the project.

The Environmental Services Division will identify groups that are adversely affected by the project, and will identify and address disproportionately high and adverse impacts on minority or low income populations.

Regulations and Guidance

Community Impact Assessment, A Quick Reference for Transportation, FHWA-PD-96-036, September 1996.

[FHWA Environmental Guidebook](#)

[FHWA Technical Advisory T 6640.8A](#)

Community Impact Assessment Website at www.ciatrans.net

Title VI of the *Civil Rights Act of 1964*

EO 12898 on Environmental Justice (1994)

DOT Order 5610.2 *Department of Transportation Actions to Address Environmental Justice in Minority Populations and Low-Income Populations*, April 15, 1997.

DOT Order 6640.23 *FHWA Actions to Address Environmental Justice in Minority Populations and Low-Income Populations*, December 2, 1998.

Uniform Relocation Assistance and Real Property Acquisition Policies Act of 1970 – referred to as the *Uniform Act*, as amended in 1987.

49 CFR Part 24 “Uniform Relocation Assistance and Real Property Acquisition for Federal and Federally-Assisted Programs.”

PROJECT ACTIVITY

Activity Title: Examine Mitigation Options

Activity No.: 5

Activity Description:

The Environmental Services Division will work with the Project Management Team to identify design or engineering options to deal with socio-economic impacts – starting with avoidance, and then moving on to minimization and mitigation.

Regulations and Guidance

Community Impact Mitigation Handbook, FHWA-PD-98-024, May 1998.

Community Impact Assessment, A Quick Reference for Transportation, FHWA-PD-96-036, September 1996.

Community Impact Assessment Website at www.ciatrans.net

EO 12898 on Environmental Justice (1994)

DOT Order 5610.2 *Department of Transportation Actions to Address Environmental Justice in Minority Populations and Low-Income Populations*, April 15, 1997.

DOT Order 6640.23 *FHWA Actions to Address Environmental Justice in Minority Populations and Low-Income Populations*, December 2, 1998.

23 CFR Part 750 “Highway Beautification”

PROJECT ACTIVITY

Activity Title: Document Socio-Economic Impact and Analysis

Activity No.: 6

Activity Description:

The Environmental Services Division will prepare documentation regarding the results of the analysis of socio-economic impacts and associated avoidance, minimization and mitigation measures for inclusion in the environmental documentation for the proposed project.

Mitigation commitments will be included in the NEPA document.

See [Section 2.3 "Preparing An Administrative Record."](#)

Regulations and Guidance

[FHWA Environmental Guidebook](#)

[FHWA Technical Advisory T 6640.8A](#)

Community Impact Assessment, A Quick Reference for Transportation, FHWA-PD-96-036, September 1996.

Community Impact Assessment Website at www.ciatrans.net

DOT Order 6640.23 *FHWA Actions to Address Environmental Justice in Minority Populations and Low-Income Populations*, December 2, 1998.

PROJECT ACTIVITY	
<u>Activity Title:</u>	Include Mitigation Commitments in Contract Documents
<u>Activity No.:</u>	7
<u>Activity Description:</u>	
<p>The Environmental Services Division will coordinate with the Project Management Team to ensure avoidance, minimization and mitigation measures for addressing the project’s socio-economic impacts are reflected in the Construction Contract Documents.</p>	

PROJECT ACTIVITY

Activity Title: Monitor Mitigation Commitments

Activity No.: 8

Activity Description:

The Environmental Services Division will monitor project construction activities to ensure mitigation commitments for addressing socio-economic impacts are implemented in accordance with the Construction Contract Documents.

See [Section 2.4](#) for an Environmental Commitment Checklist.