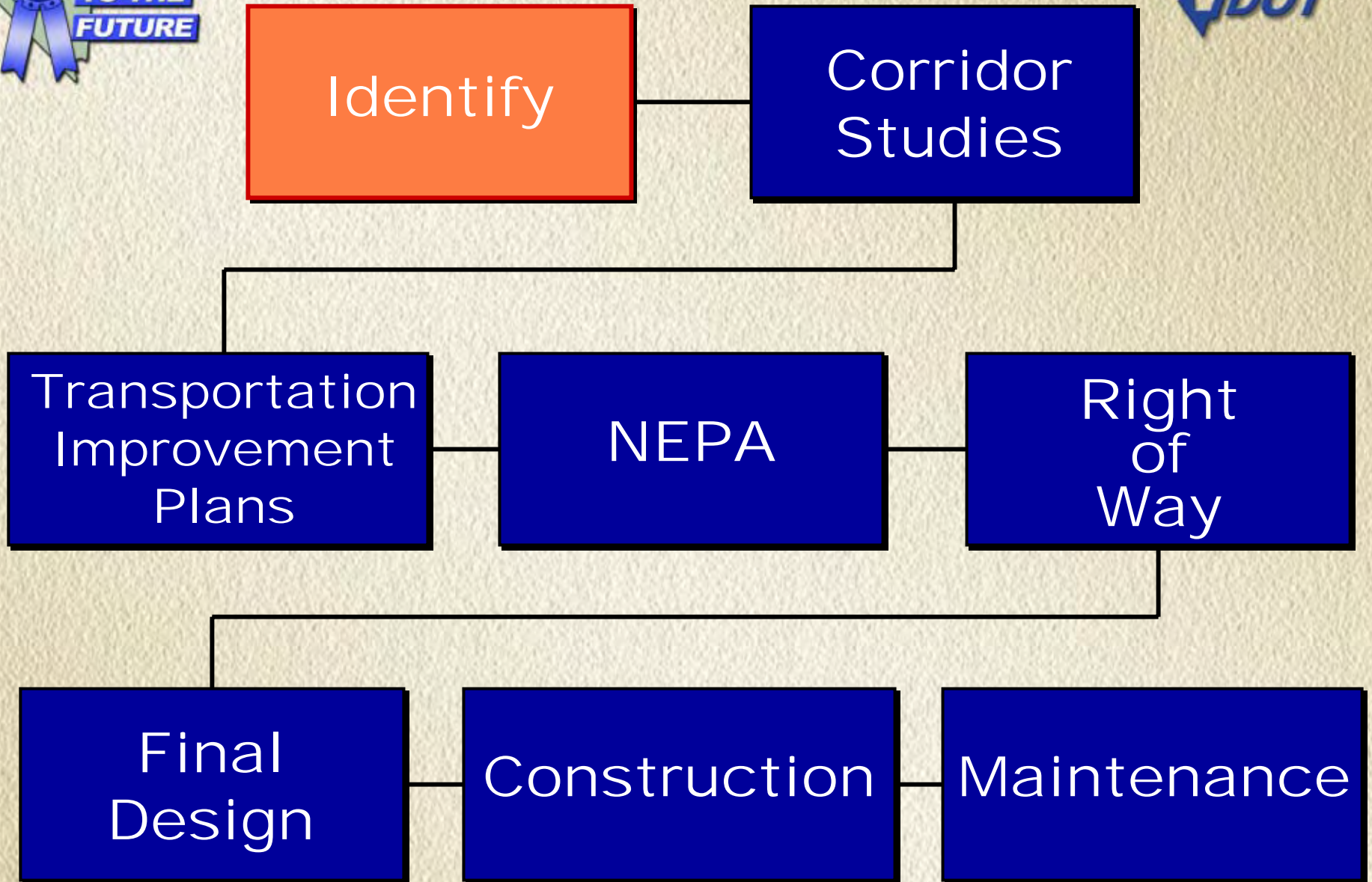


Agenda Item 6

Corridor Study & Project Development



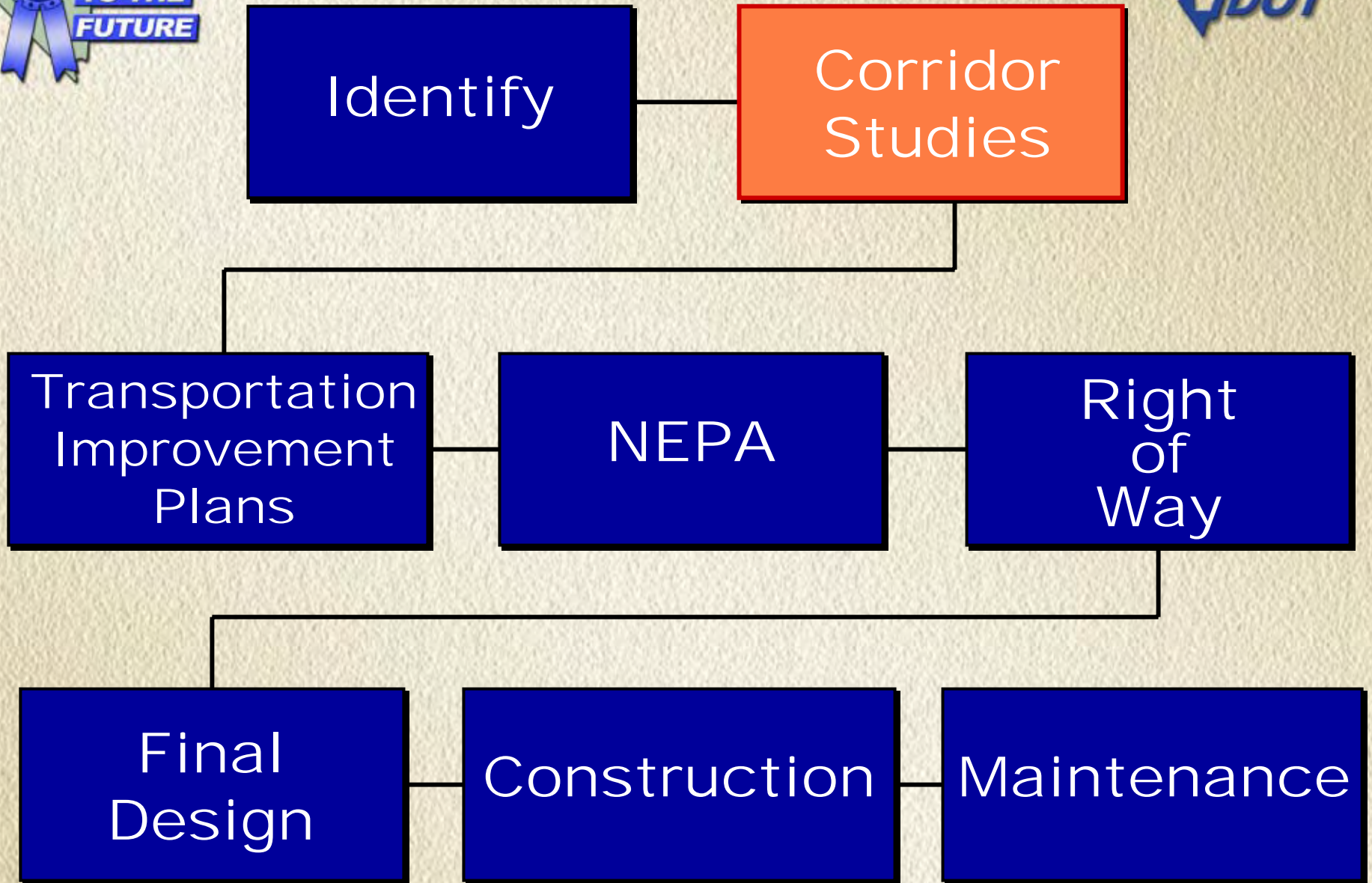
**Presented to
Blue Ribbon Task Force
December 2, 2005
Susan Martinovich, P.E.
Deputy Director,
Nevada Department of Transportation**





Identify

- **Metropolitan Planning Organizations (MPO)
/Local Jurisdictions**
 - **Public Workshops**
 - **Statewide Transportation Technical Advisory Committee (STTAC)**
 - **NDOT Planning**





Corridor Studies

- **Zoning and Land Use**
- **Traffic Numbers, Origin/Destination Studies**
- **Public Participation**
- **Alternatives**
 - **Widening**
 - **Interchanges**
 - **Transit and Alternative Modes**
 - **New Routes**

“Identify Projects and Phases”



Identify

Corridor
Studies

Transportation
Improvement
Plans

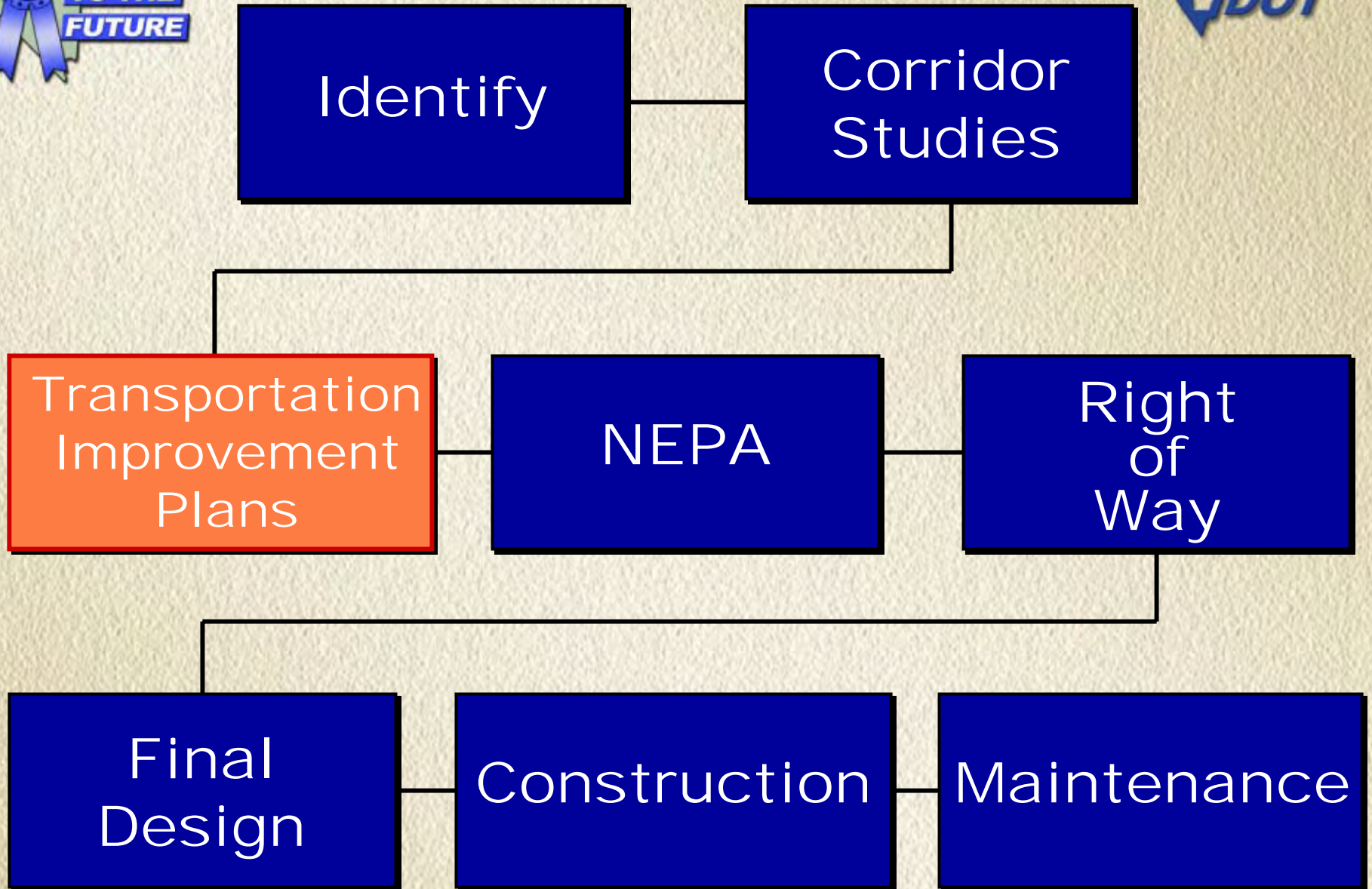
NEPA

Right
of
Way

Final
Design

Construction

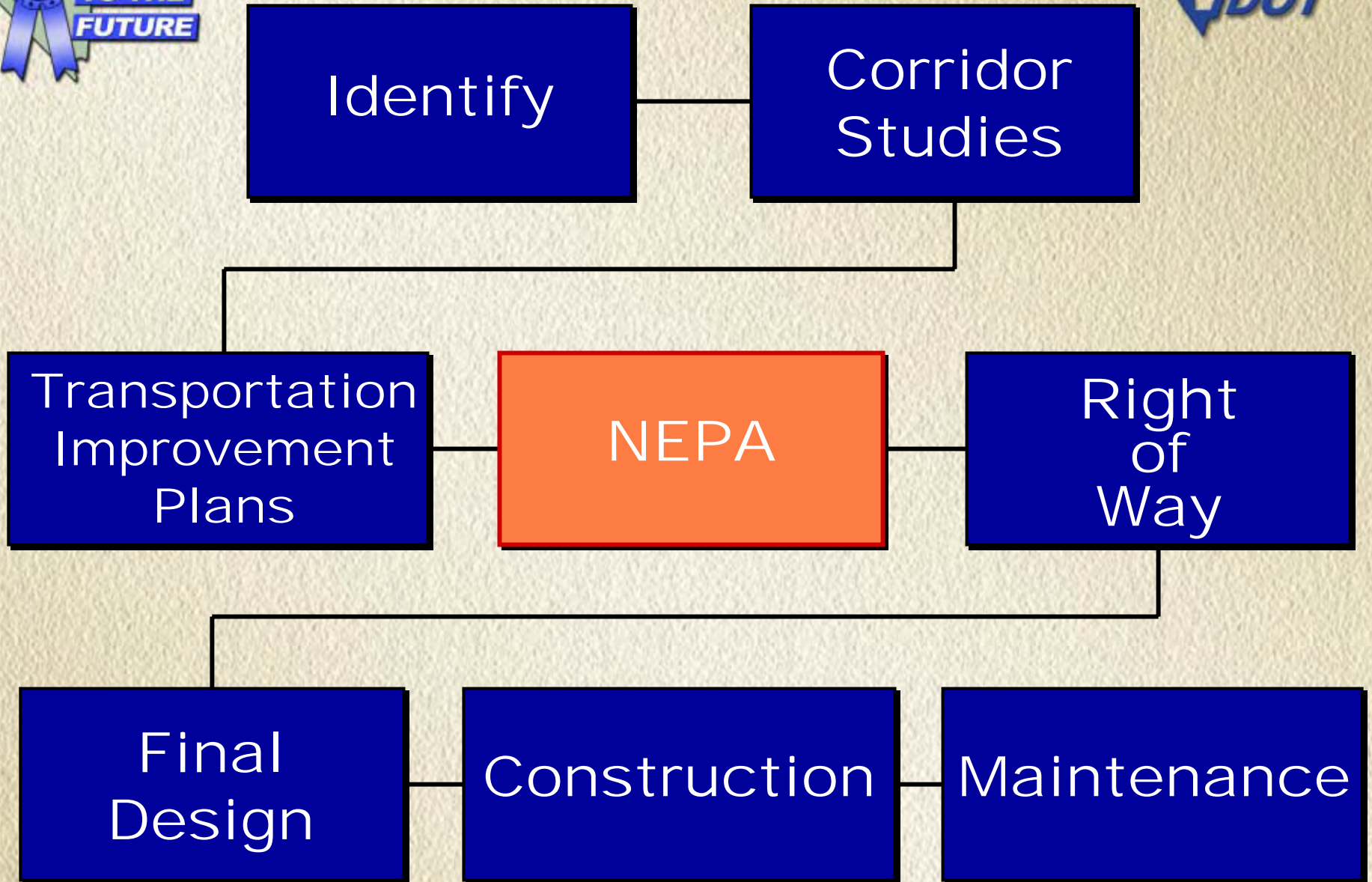
Maintenance





Transportation Improvement Plans Regional and Statewide

- **Statewide Transportation Improvement Plan (STIP)**
 - **Components: Annual Work Program; 3-year Short-Range (fiscally constrained); Long-Range.**
 - **Money Programmed (appropriate year for appropriate element) – Design, Right of Way, Construction**
- **Regional Transportation Improvement Plan (RTIP)**
 - **Metropolitan Planning Organization approves**
 - **Adopted without changes into STIP**
- **FHWA approval**





NEPA

National Environmental Protection Act

- **Categorical Exclusion (CE)**
- **Environmental Assessment (EA)**
 - 18 months – 3 years
 - Finding of No Significant Impact (FONSI)
- **Environmental Impact Statement (EIS)**
 - 2 – 5 years
 - Record of Decision (ROD)



NEPA

- **Social Impacts**
 - **Environmental Justice**
 - **Noise**
 - **Access**
 - **Community Impact**
- **Environmental Impacts**
 - **Wetlands**
 - **Wildlife Habitat**
 - **Cultural/Archeology**
 - **Air/Water Quality**



NEPA

- **Level of Service**

- **A – Greater than 60mph and free flow, unimpeded.**
- **B – 57–60 mph. Stable flow with slight delays.**
- **C – 54–57 mph. Stable flow with delays. Less freedom to maneuver**
- **D – 46–54 mph. High-density, but stable flow.**
- **E – 30-46 mph. At or near capacity, unstable flow.**
- **F – Less than 30 mph. Forced flow with breakdown conditions.**

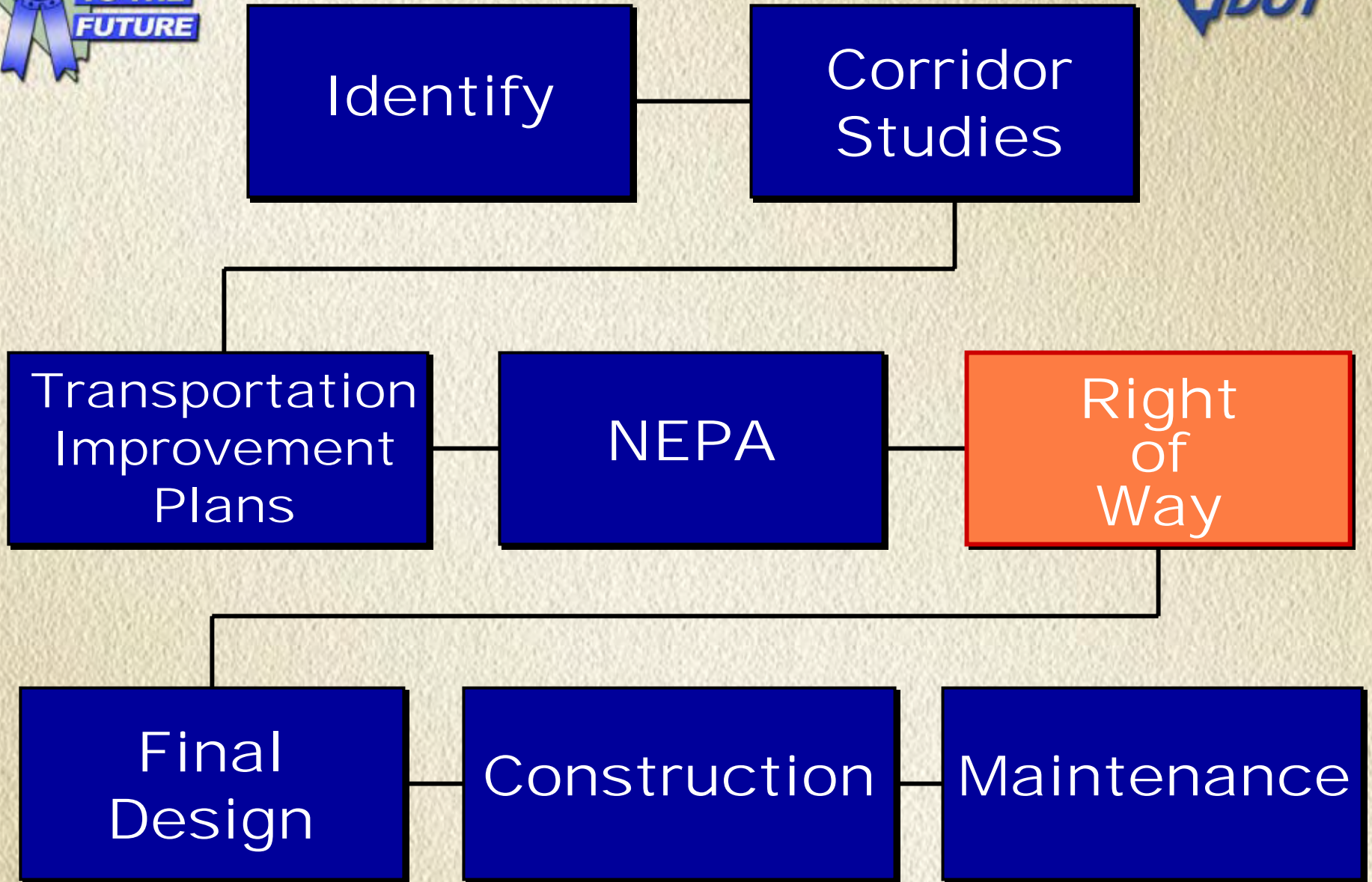


NEPA

- **Cooperating Agencies**
- **Public Involvement**

Evaluates impacts and footprint of alternatives.

**“Preferred Alternative” – Support of Local
Jurisdiction**

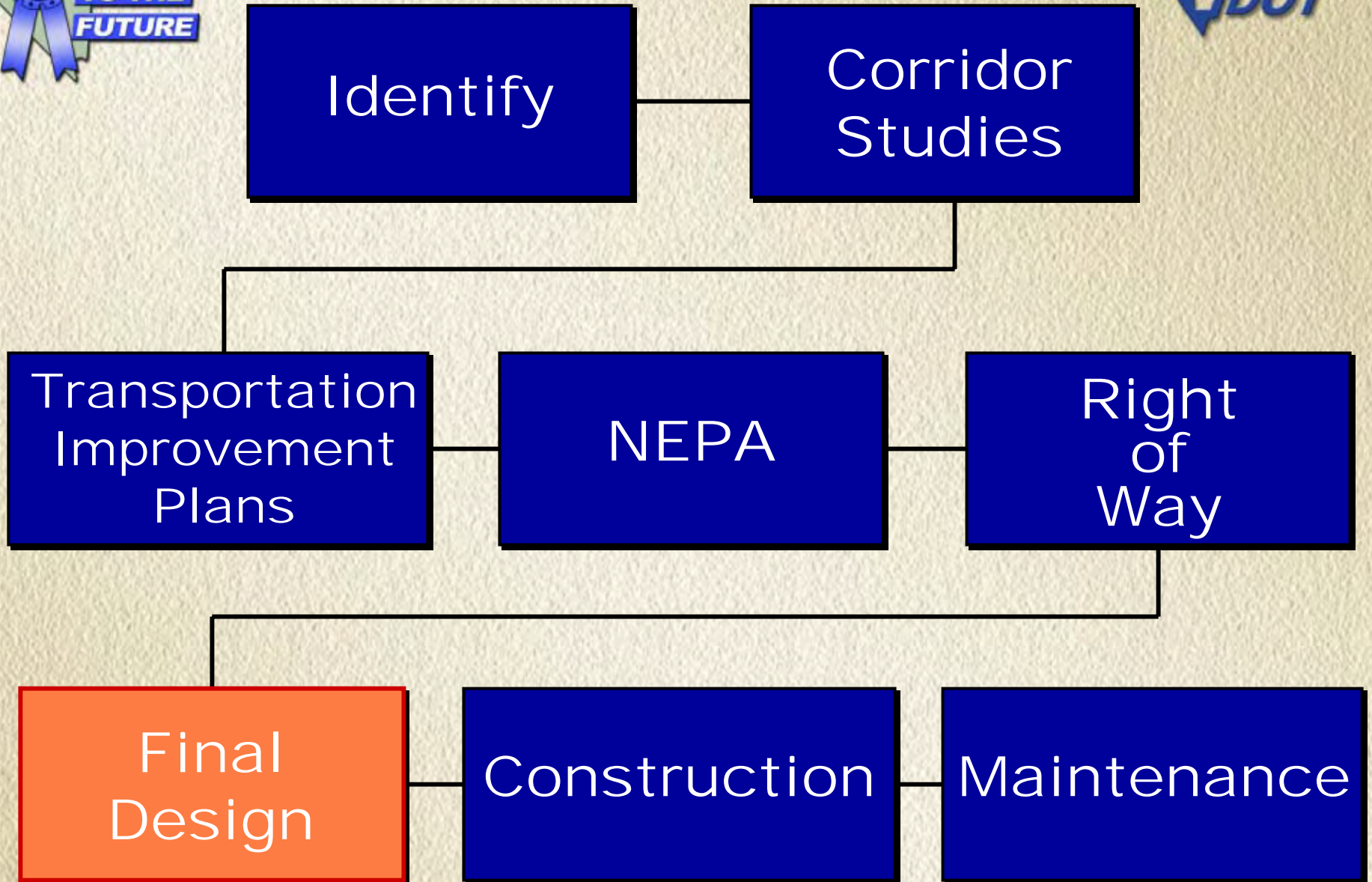




Right of Way



- **Preferred Alternative to 50% design – Set ROW**
- **NRS 408 and Federal CFR 23 - Show Purpose and Need**
- **Evaluate**
 - **Highest and best use in before and after condition**
 - **Access**
 - **Remainders**
 - **Cost of total acquisition versus partial**
 - **Owners needs and desires**
- **Costs**
 - **Acquisition**
 - **Relocation**
 - **Advanced acquisition**

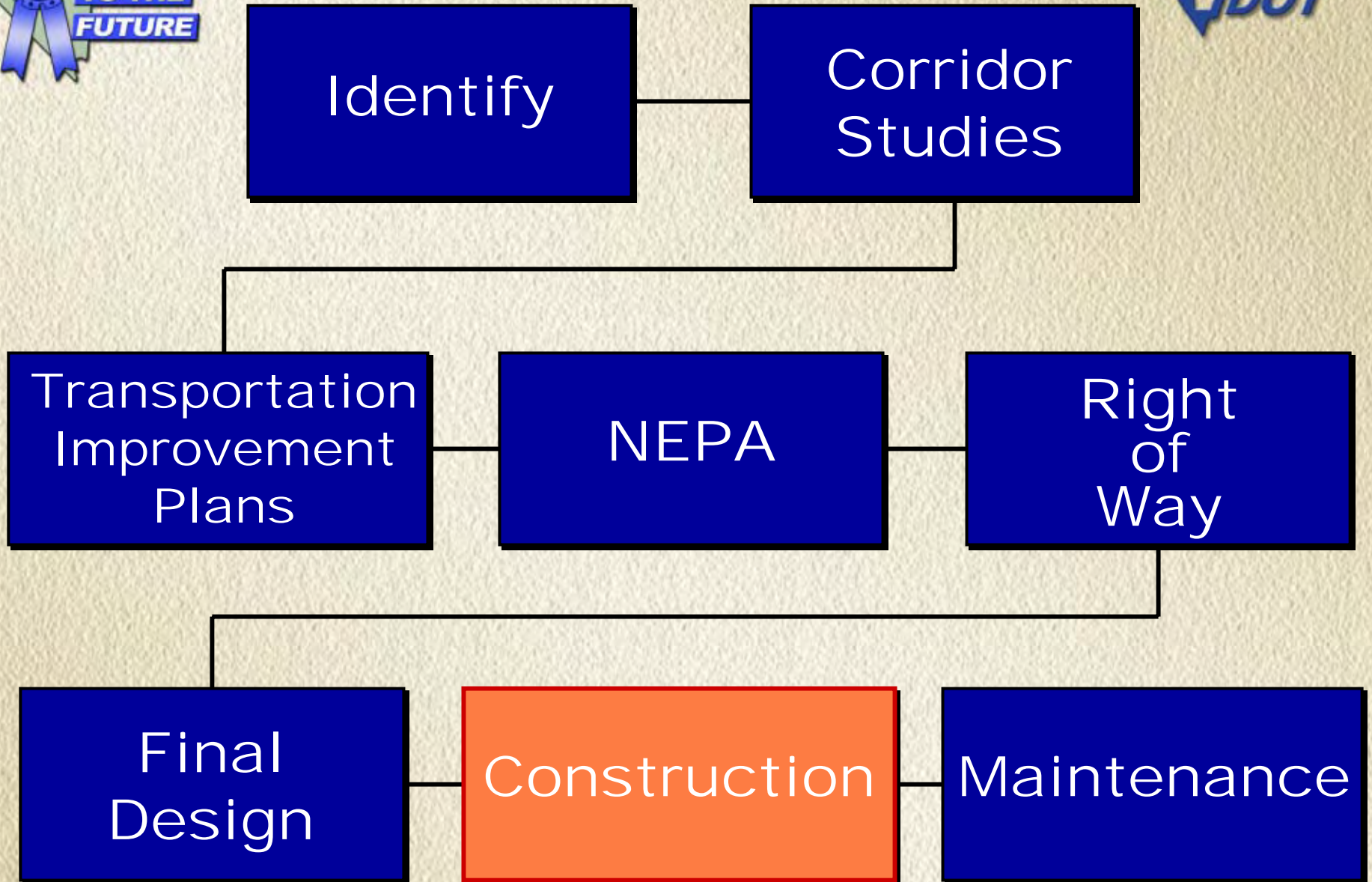




Final Design



- **Roadway Design**
 - **Horizontal/Vertical Alignments within Footprint**
- **Structural Design**
- **Hydraulic Design**
- **Traffic/Safety**
- **Construction**
 - **Feasibility/Staging**
 - **Working Days – production and limitations**
 - **Traffic Impacts**

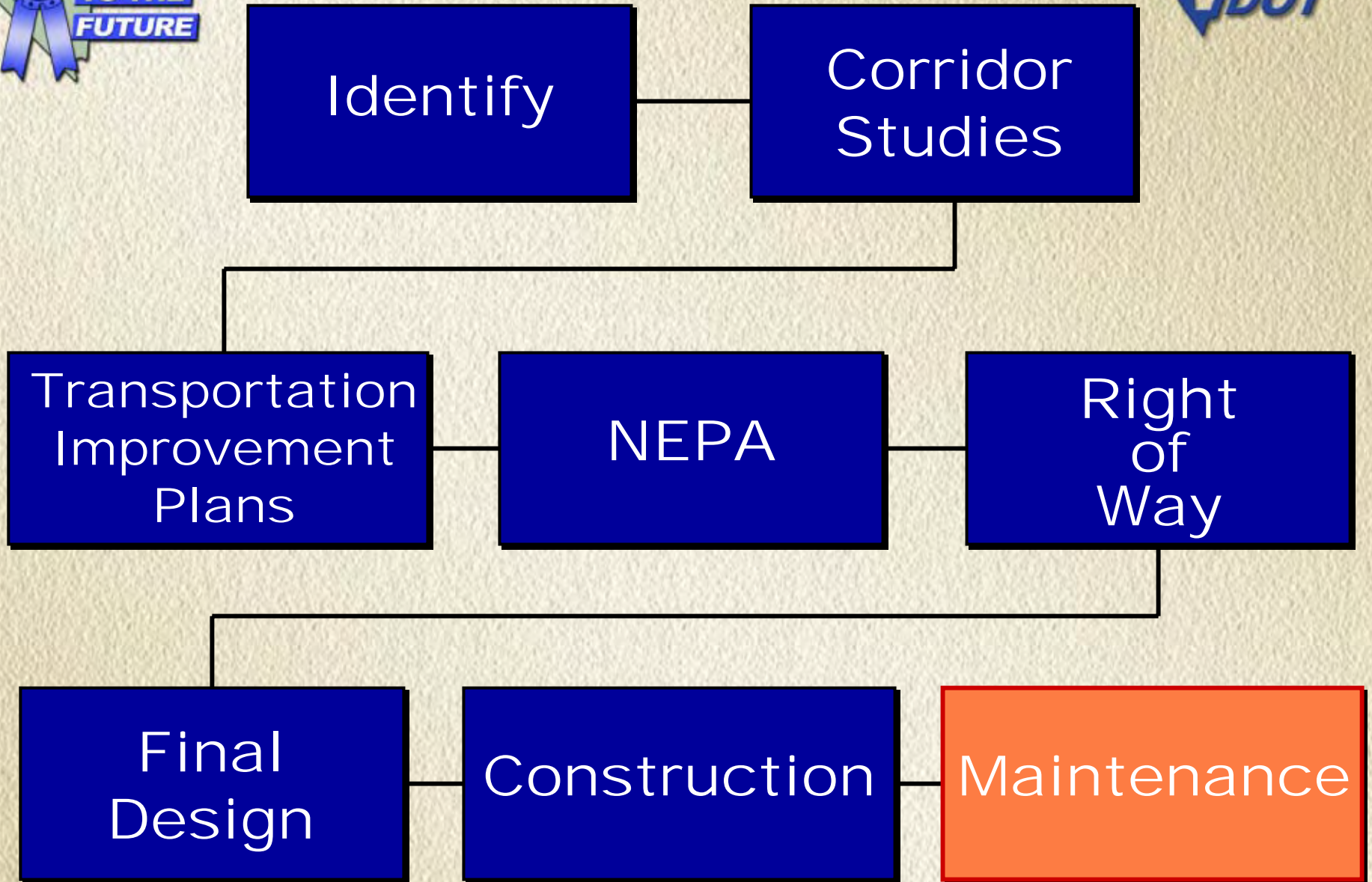




Construction



- **Get In and Get Out**
 - Liquidated Damages
 - Incentives
 - Milestones
- **Workzone Safety**
- **Bidding**
 - Low Bid
 - A + B Bid
 - Design Build (after NEPA)





Maintenance

- **General (daily)**
 - **Striping and Signing**
 - **Roadside Cleanup**
 - **Graffiti**
 - **Landscaping**
 - **Permitting**
- **Rehabilitation**