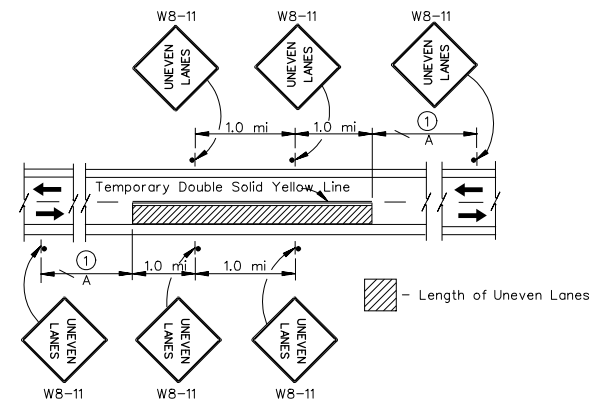


TYPICAL PLACEMENT OF SHOULDER DROP OFF SIGNS
(PLACED WHEN SHOULDER DROP-OFF EXIST
DURING NON-WORKING HOURS)

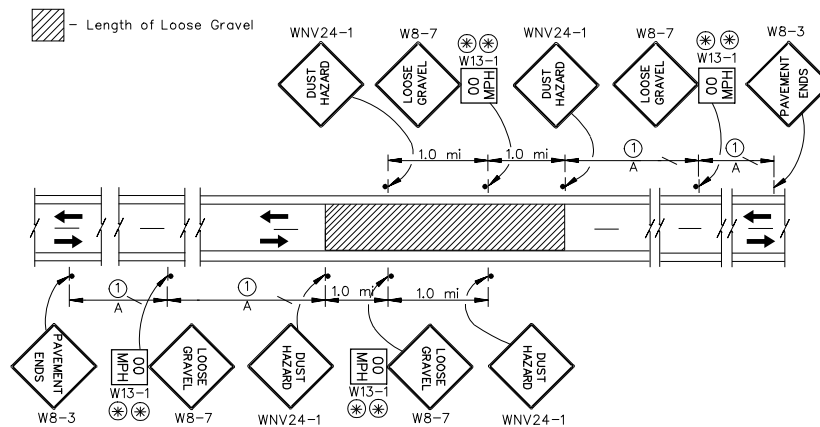


TYPICAL PLACEMENT OF UNEVEN LANES SIGNS
(PLACED WHEN UNEVEN LANES EXIST
DURING NON-WORKING HOURS)

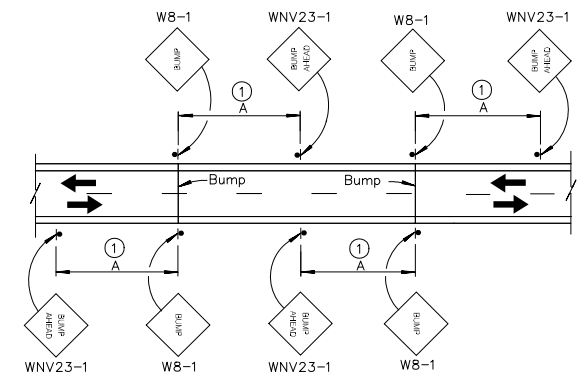
LEGEND:

- ⊗ ⊗ - OPTIONAL
* - SEE GENERAL NOTE NO. 1.

See T-35.1.1 For TABLES and GENERAL NOTES



TYPICAL PLACEMENT OF LOOSE GRAVEL/DUST HAZARD SIGNS



TYPICAL PLACEMENT OF BUMP SIGNS

NEVADA DEPARTMENT OF TRANSPORTATION			
TYPICAL TRAFFIC CONTROL FOR SHLDR. DROP OFF/ UNEVEN LANES/DUST HAZARD /LOOSE GRAVEL & BUMP			
Signed Original On File	T-35.1.11	(625)	
CHIEF SAFETY/TRAFFIC ENGR.	ADOPTED 7/96	REVISION	6/06