

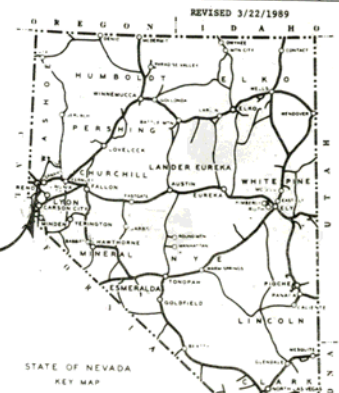
FED. RD. RES. NO.	STATE	PROJECT NO.	COUNTY	SHEET NO.
9	NEVADA	IR-580-1(12)0	WASHOE	1

INDEX OF SHEETS

- | | | | |
|------|----------------------|--------|--|
| 1-1C | TITLE SHEETS | B1-819 | M-1090 MEKINDEN ROAD GRADE SEPARATION MODIFICATION |
| 1-1D | GENERAL NOTES | B1-820 | STRUCTURE LIST - I 580 AND US 395 INTERCHANGE RAMP |
| 1-1E | QUANTITIES | B1-821 | US 395 INTERCHANGE RAMP |
| 1-1F | PLANS | B1-822 | US 395 STRUCTURES |
| 1-1G | SECTIONAL ELEVATIONS | B1-823 | US 395 INTERCHANGE RAMP |
| 1-1H | PLANS | B1-824 | US 395 INTERCHANGE RAMP |
| 1-1I | PLANS | B1-825 | US 395 INTERCHANGE RAMP |
| 1-1J | PLANS | B1-826 | US 395 INTERCHANGE RAMP |
| 1-1K | PLANS | B1-827 | US 395 INTERCHANGE RAMP |
| 1-1L | PLANS | B1-828 | US 395 INTERCHANGE RAMP |
| 1-1M | PLANS | B1-829 | US 395 INTERCHANGE RAMP |
| 1-1N | PLANS | B1-830 | US 395 INTERCHANGE RAMP |
| 1-1O | PLANS | B1-831 | US 395 INTERCHANGE RAMP |
| 1-1P | PLANS | B1-832 | US 395 INTERCHANGE RAMP |
| 1-1Q | PLANS | B1-833 | US 395 INTERCHANGE RAMP |
| 1-1R | PLANS | B1-834 | US 395 INTERCHANGE RAMP |
| 1-1S | PLANS | B1-835 | US 395 INTERCHANGE RAMP |
| 1-1T | PLANS | B1-836 | US 395 INTERCHANGE RAMP |
| 1-1U | PLANS | B1-837 | US 395 INTERCHANGE RAMP |
| 1-1V | PLANS | B1-838 | US 395 INTERCHANGE RAMP |
| 1-1W | PLANS | B1-839 | US 395 INTERCHANGE RAMP |
| 1-1X | PLANS | B1-840 | US 395 INTERCHANGE RAMP |
| 1-1Y | PLANS | B1-841 | US 395 INTERCHANGE RAMP |
| 1-1Z | PLANS | B1-842 | US 395 INTERCHANGE RAMP |
| 1-2A | PLANS | B1-843 | US 395 INTERCHANGE RAMP |
| 1-2B | PLANS | B1-844 | US 395 INTERCHANGE RAMP |
| 1-2C | PLANS | B1-845 | US 395 INTERCHANGE RAMP |
| 1-2D | PLANS | B1-846 | US 395 INTERCHANGE RAMP |
| 1-2E | PLANS | B1-847 | US 395 INTERCHANGE RAMP |
| 1-2F | PLANS | B1-848 | US 395 INTERCHANGE RAMP |
| 1-2G | PLANS | B1-849 | US 395 INTERCHANGE RAMP |
| 1-2H | PLANS | B1-850 | US 395 INTERCHANGE RAMP |
| 1-2I | PLANS | B1-851 | US 395 INTERCHANGE RAMP |
| 1-2J | PLANS | B1-852 | US 395 INTERCHANGE RAMP |
| 1-2K | PLANS | B1-853 | US 395 INTERCHANGE RAMP |
| 1-2L | PLANS | B1-854 | US 395 INTERCHANGE RAMP |
| 1-2M | PLANS | B1-855 | US 395 INTERCHANGE RAMP |
| 1-2N | PLANS | B1-856 | US 395 INTERCHANGE RAMP |
| 1-2O | PLANS | B1-857 | US 395 INTERCHANGE RAMP |
| 1-2P | PLANS | B1-858 | US 395 INTERCHANGE RAMP |
| 1-2Q | PLANS | B1-859 | US 395 INTERCHANGE RAMP |
| 1-2R | PLANS | B1-860 | US 395 INTERCHANGE RAMP |
| 1-2S | PLANS | B1-861 | US 395 INTERCHANGE RAMP |
| 1-2T | PLANS | B1-862 | US 395 INTERCHANGE RAMP |
| 1-2U | PLANS | B1-863 | US 395 INTERCHANGE RAMP |
| 1-2V | PLANS | B1-864 | US 395 INTERCHANGE RAMP |
| 1-2W | PLANS | B1-865 | US 395 INTERCHANGE RAMP |
| 1-2X | PLANS | B1-866 | US 395 INTERCHANGE RAMP |
| 1-2Y | PLANS | B1-867 | US 395 INTERCHANGE RAMP |
| 1-2Z | PLANS | B1-868 | US 395 INTERCHANGE RAMP |
| 1-3A | PLANS | B1-869 | US 395 INTERCHANGE RAMP |
| 1-3B | PLANS | B1-870 | US 395 INTERCHANGE RAMP |
| 1-3C | PLANS | B1-871 | US 395 INTERCHANGE RAMP |
| 1-3D | PLANS | B1-872 | US 395 INTERCHANGE RAMP |
| 1-3E | PLANS | B1-873 | US 395 INTERCHANGE RAMP |
| 1-3F | PLANS | B1-874 | US 395 INTERCHANGE RAMP |
| 1-3G | PLANS | B1-875 | US 395 INTERCHANGE RAMP |
| 1-3H | PLANS | B1-876 | US 395 INTERCHANGE RAMP |
| 1-3I | PLANS | B1-877 | US 395 INTERCHANGE RAMP |
| 1-3J | PLANS | B1-878 | US 395 INTERCHANGE RAMP |
| 1-3K | PLANS | B1-879 | US 395 INTERCHANGE RAMP |
| 1-3L | PLANS | B1-880 | US 395 INTERCHANGE RAMP |
| 1-3M | PLANS | B1-881 | US 395 INTERCHANGE RAMP |
| 1-3N | PLANS | B1-882 | US 395 INTERCHANGE RAMP |
| 1-3O | PLANS | B1-883 | US 395 INTERCHANGE RAMP |
| 1-3P | PLANS | B1-884 | US 395 INTERCHANGE RAMP |
| 1-3Q | PLANS | B1-885 | US 395 INTERCHANGE RAMP |
| 1-3R | PLANS | B1-886 | US 395 INTERCHANGE RAMP |
| 1-3S | PLANS | B1-887 | US 395 INTERCHANGE RAMP |
| 1-3T | PLANS | B1-888 | US 395 INTERCHANGE RAMP |
| 1-3U | PLANS | B1-889 | US 395 INTERCHANGE RAMP |
| 1-3V | PLANS | B1-890 | US 395 INTERCHANGE RAMP |
| 1-3W | PLANS | B1-891 | US 395 INTERCHANGE RAMP |
| 1-3X | PLANS | B1-892 | US 395 INTERCHANGE RAMP |
| 1-3Y | PLANS | B1-893 | US 395 INTERCHANGE RAMP |
| 1-3Z | PLANS | B1-894 | US 395 INTERCHANGE RAMP |
| 1-4A | PLANS | B1-895 | US 395 INTERCHANGE RAMP |
| 1-4B | PLANS | B1-896 | US 395 INTERCHANGE RAMP |
| 1-4C | PLANS | B1-897 | US 395 INTERCHANGE RAMP |
| 1-4D | PLANS | B1-898 | US 395 INTERCHANGE RAMP |
| 1-4E | PLANS | B1-899 | US 395 INTERCHANGE RAMP |
| 1-4F | PLANS | B1-900 | US 395 INTERCHANGE RAMP |
| 1-4G | PLANS | B1-901 | US 395 INTERCHANGE RAMP |
| 1-4H | PLANS | B1-902 | US 395 INTERCHANGE RAMP |
| 1-4I | PLANS | B1-903 | US 395 INTERCHANGE RAMP |
| 1-4J | PLANS | B1-904 | US 395 INTERCHANGE RAMP |
| 1-4K | PLANS | B1-905 | US 395 INTERCHANGE RAMP |
| 1-4L | PLANS | B1-906 | US 395 INTERCHANGE RAMP |
| 1-4M | PLANS | B1-907 | US 395 INTERCHANGE RAMP |
| 1-4N | PLANS | B1-908 | US 395 INTERCHANGE RAMP |
| 1-4O | PLANS | B1-909 | US 395 INTERCHANGE RAMP |
| 1-4P | PLANS | B1-910 | US 395 INTERCHANGE RAMP |
| 1-4Q | PLANS | B1-911 | US 395 INTERCHANGE RAMP |
| 1-4R | PLANS | B1-912 | US 395 INTERCHANGE RAMP |
| 1-4S | PLANS | B1-913 | US 395 INTERCHANGE RAMP |
| 1-4T | PLANS | B1-914 | US 395 INTERCHANGE RAMP |
| 1-4U | PLANS | B1-915 | US 395 INTERCHANGE RAMP |
| 1-4V | PLANS | B1-916 | US 395 INTERCHANGE RAMP |
| 1-4W | PLANS | B1-917 | US 395 INTERCHANGE RAMP |
| 1-4X | PLANS | B1-918 | US 395 INTERCHANGE RAMP |
| 1-4Y | PLANS | B1-919 | US 395 INTERCHANGE RAMP |
| 1-4Z | PLANS | B1-920 | US 395 INTERCHANGE RAMP |

STATE OF NEVADA
DEPARTMENT OF TRANSPORTATION
WASHOE COUNTY
CONSTRUCTION PLANS
FROM FAU 661 (SOUTH VIRGINIA STREET) NORTHERLY VIA
NORTH-SOUTH FREEWAY TO RS 080-1 AT THE U.S.395 INTERCHANGE

PROJECT IR-580-1(12)0
I 580-WA21.91 to 25.83

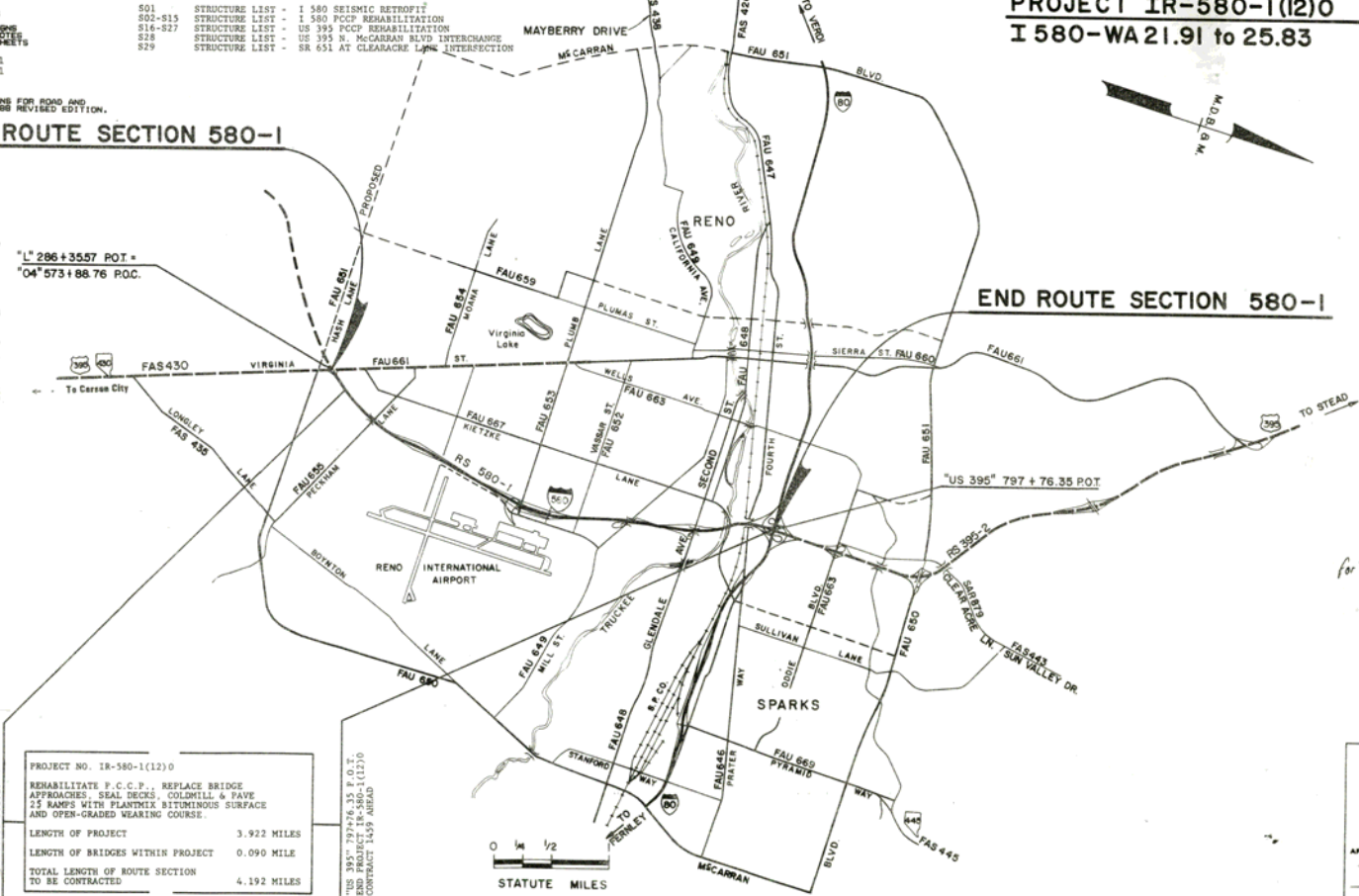


- | | | | |
|-------|---|---------|---|
| TC-1 | TRAFFIC CONTROL - PHASING DIAGRAM (S thru VI) | S01 | STRUCTURE LIST - I 580 SEISMIC RETROFIT |
| TC-1A | TRAFFIC CONTROL - PHASING DIAGRAM (S thru VI) | S02-S15 | STRUCTURE LIST - I 580 PCRP REHABILITATION |
| TC-1B | TRAFFIC CONTROL - PHASING DIAGRAM (S thru VI) | S16-S27 | STRUCTURE LIST - US 395 PCRP REHABILITATION |
| TC-1C | TRAFFIC CONTROL - PHASING DIAGRAM (S thru VI) | S28 | STRUCTURE LIST - US 395 N. MCCARRAN BLVD INTERCHANGE |
| TC-1D | TRAFFIC CONTROL - PHASING DIAGRAM (S thru VI) | S29 | STRUCTURE LIST - SR 651 AT CLEARCREEK LANE INTERSECTION |
| TC-1E | TRAFFIC CONTROL - PHASING DIAGRAM (S thru VI) | | |
| TC-1F | TRAFFIC CONTROL - PHASING DIAGRAM (S thru VI) | | |
| TC-1G | TRAFFIC CONTROL - PHASING DIAGRAM (S thru VI) | | |
| TC-1H | TRAFFIC CONTROL - PHASING DIAGRAM (S thru VI) | | |
| TC-1I | TRAFFIC CONTROL - PHASING DIAGRAM (S thru VI) | | |
| TC-1J | TRAFFIC CONTROL - PHASING DIAGRAM (S thru VI) | | |
| TC-1K | TRAFFIC CONTROL - PHASING DIAGRAM (S thru VI) | | |
| TC-1L | TRAFFIC CONTROL - PHASING DIAGRAM (S thru VI) | | |
| TC-1M | TRAFFIC CONTROL - PHASING DIAGRAM (S thru VI) | | |
| TC-1N | TRAFFIC CONTROL - PHASING DIAGRAM (S thru VI) | | |
| TC-1O | TRAFFIC CONTROL - PHASING DIAGRAM (S thru VI) | | |
| TC-1P | TRAFFIC CONTROL - PHASING DIAGRAM (S thru VI) | | |
| TC-1Q | TRAFFIC CONTROL - PHASING DIAGRAM (S thru VI) | | |
| TC-1R | TRAFFIC CONTROL - PHASING DIAGRAM (S thru VI) | | |
| TC-1S | TRAFFIC CONTROL - PHASING DIAGRAM (S thru VI) | | |
| TC-1T | TRAFFIC CONTROL - PHASING DIAGRAM (S thru VI) | | |
| TC-1U | TRAFFIC CONTROL - PHASING DIAGRAM (S thru VI) | | |
| TC-1V | TRAFFIC CONTROL - PHASING DIAGRAM (S thru VI) | | |
| TC-1W | TRAFFIC CONTROL - PHASING DIAGRAM (S thru VI) | | |
| TC-1X | TRAFFIC CONTROL - PHASING DIAGRAM (S thru VI) | | |
| TC-1Y | TRAFFIC CONTROL - PHASING DIAGRAM (S thru VI) | | |
| TC-1Z | TRAFFIC CONTROL - PHASING DIAGRAM (S thru VI) | | |
| TC-2A | TRAFFIC CONTROL - PHASING DIAGRAM (S thru VI) | | |
| TC-2B | TRAFFIC CONTROL - PHASING DIAGRAM (S thru VI) | | |
| TC-2C | TRAFFIC CONTROL - PHASING DIAGRAM (S thru VI) | | |
| TC-2D | TRAFFIC CONTROL - PHASING DIAGRAM (S thru VI) | | |
| TC-2E | TRAFFIC CONTROL - PHASING DIAGRAM (S thru VI) | | |
| TC-2F | TRAFFIC CONTROL - PHASING DIAGRAM (S thru VI) | | |
| TC-2G | TRAFFIC CONTROL - PHASING DIAGRAM (S thru VI) | | |
| TC-2H | TRAFFIC CONTROL - PHASING DIAGRAM (S thru VI) | | |
| TC-2I | TRAFFIC CONTROL - PHASING DIAGRAM (S thru VI) | | |
| TC-2J | TRAFFIC CONTROL - PHASING DIAGRAM (S thru VI) | | |
| TC-2K | TRAFFIC CONTROL - PHASING DIAGRAM (S thru VI) | | |
| TC-2L | TRAFFIC CONTROL - PHASING DIAGRAM (S thru VI) | | |
| TC-2M | TRAFFIC CONTROL - PHASING DIAGRAM (S thru VI) | | |
| TC-2N | TRAFFIC CONTROL - PHASING DIAGRAM (S thru VI) | | |
| TC-2O | TRAFFIC CONTROL - PHASING DIAGRAM (S thru VI) | | |
| TC-2P | TRAFFIC CONTROL - PHASING DIAGRAM (S thru VI) | | |
| TC-2Q | TRAFFIC CONTROL - PHASING DIAGRAM (S thru VI) | | |
| TC-2R | TRAFFIC CONTROL - PHASING DIAGRAM (S thru VI) | | |
| TC-2S | TRAFFIC CONTROL - PHASING DIAGRAM (S thru VI) | | |
| TC-2T | TRAFFIC CONTROL - PHASING DIAGRAM (S thru VI) | | |
| TC-2U | TRAFFIC CONTROL - PHASING DIAGRAM (S thru VI) | | |
| TC-2V | TRAFFIC CONTROL - PHASING DIAGRAM (S thru VI) | | |
| TC-2W | TRAFFIC CONTROL - PHASING DIAGRAM (S thru VI) | | |
| TC-2X | TRAFFIC CONTROL - PHASING DIAGRAM (S thru VI) | | |
| TC-2Y | TRAFFIC CONTROL - PHASING DIAGRAM (S thru VI) | | |
| TC-2Z | TRAFFIC CONTROL - PHASING DIAGRAM (S thru VI) | | |

SEE BOOK OF STANDARD PLANS FOR ROAD AND BRIDGE CONSTRUCTION, 1908 REVISED EDITION.

BEGIN ROUTE SECTION 580-1

- ALIGNMENT
- IR-580-WA-21.91
 - BEGIN PROJECT IR-580-1(12)0
 - "02" 588+00.00 P.O.C.
 - "02" 602+36.91 P.O.C.
 - "02" 603+56.41 P.O.C.
 - "02" 605+66.29 P.O.T.
 - "03" 605+66.29 P.O.V.
 - "03" 628+65.97 P.O.T.
 - "03" 630+07.47 P.O.T.
 - "03" 637+09.00 P.O.C.
 - "02" 662+21.30 P.O.T.
 - "02" 653+36.44 P.O.T.
 - "02" 677+52.31 P.O.C.
 - "02" 692+95.12 P.O.C.
 - "02" 704+59.33 P.O.T.
 - "02" 705+75.87 P.O.T.
 - "02" 729+65.19 P.O.C.
 - "02" 731+38.68 P.O.C.
 - "02" 754+00.30 P.O.T.
 - "01" 755+92.80 P.O.T.
 - "01" 759+73.53 P.O.T.
 - "01" 761+02.79 P.O.C.
 - RS 395 761+02.79 P.C.
 - "US 395" 761+38.28 P.O.C.
 - "US 395" 773+58.37 P.O.C.
 - "US 395" 778+56.27 P.O.C.
 - "US 395" 783+03.46 P.O.C.
 - "US 395" 787+66.33 P.O.C.
 - "US 395" 792+42.61 P.O.T.
 - "US 395" 793+86.13 P.O.T.
 - "US 395" 797+76.35 P.O.T.
 - END PROJECT IR-580-1(12)0
 - IR-580-WA-25.83



PROJECT NO. IR-580-1(12)0	
REHABILITATE P.C.C.P., REPLACE BRIDGE APPROACHES, SEAL DECKS, COLLMILL & PAVE 25 RAMP WITH PLANTMIX BITUMINOUS SURFACE AND OPEN-GRADED WEARING COURSE.	
LENGTH OF PROJECT	3.922 MILES
LENGTH OF BRIDGES WITHIN PROJECT	0.090 MILE
TOTAL LENGTH OF ROUTE SECTION TO BE CONTRACTED	4.192 MILES

THIS PLAN WAS PREPARED BY THE DIVISION OF HIGHWAY ADMINISTRATION, DEPARTMENT OF TRANSPORTATION, NEVADA. CONTRACT 1429 AHEAD.

APPROVED JAN 30 1989
for GARTH F. DULL PE DIRECTOR, DEPT. OF TRANSPORTATION

U.S. DEPARTMENT OF TRANSPORTATION
FEDERAL HIGHWAY ADMINISTRATION

APPROVED: _____
DIVISION ADMINISTRATOR

DATE _____

INDEX OF SHEETS

STATE OF NEVADA
DEPARTMENT OF TRANSPORTATION

CONSTRUCTION PLANS

WASHOE COUNTY
FROM FAU 661 (SOUTH VIRGINIA STREET) NORTHERLY VIA
NORTH-SOUTH FREEWAY TO RS 080-1 AT THE U.S. 395 INTERCHANGE

PROJECT SPI-580-1(4)
IR 580-WA 25.37 to 25.63

FED. RD. DIST. NO.	STATE	PROJECT NO.	COUNTY	SHEET NO.
9	NEVADA	SPI-580-1(4)	WASHOE	1A

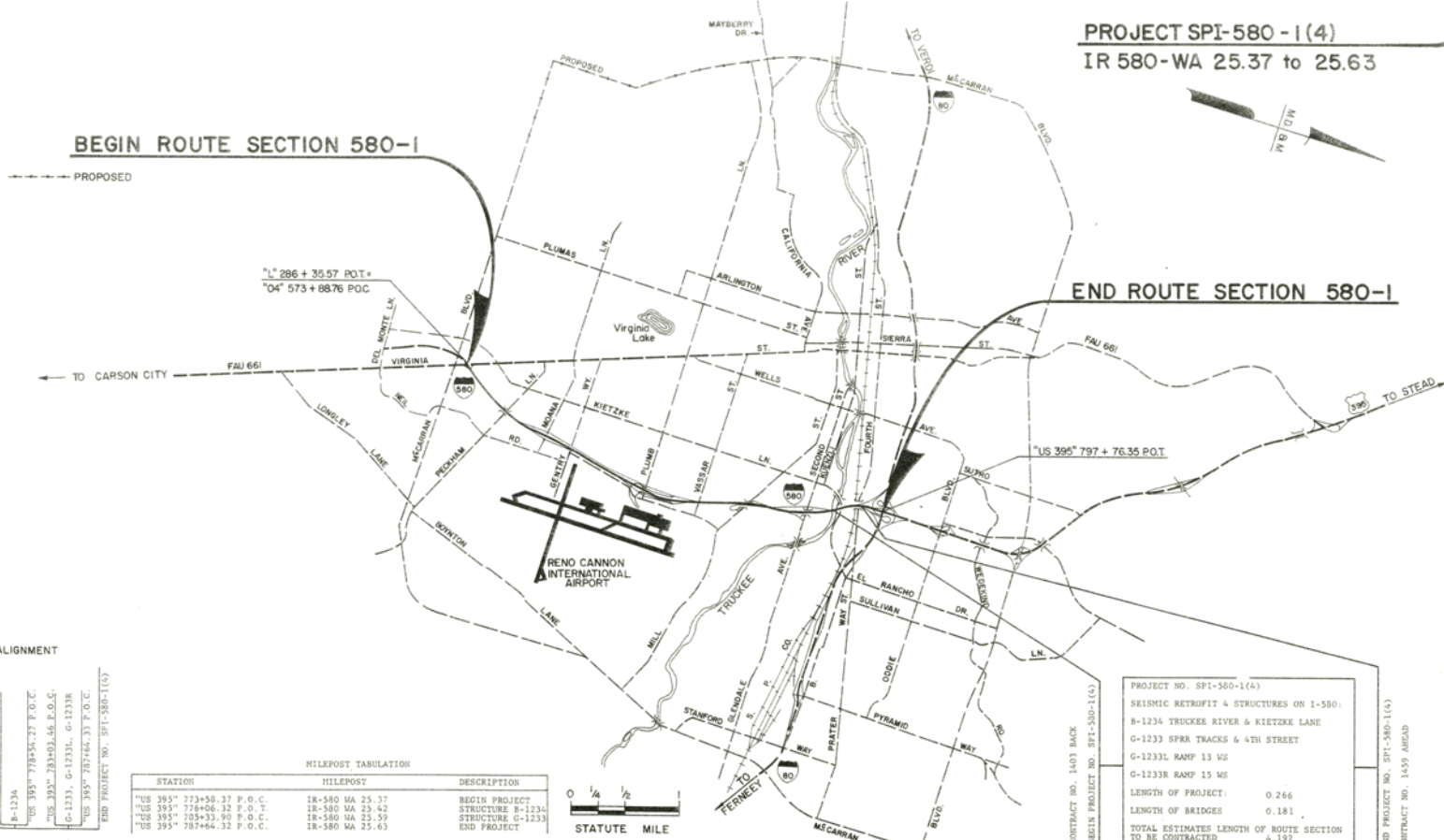
DESIGN DESIGNATION
ADT 1989 101,000
ADT 2000 113,000
DPT 20,975
DPT (2000) 557
DPT (2010) 557
DPT (2020) 70,000



STATE OF NEVADA
KEY MAP

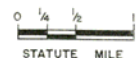
BEGIN ROUTE SECTION 580-1

END ROUTE SECTION 580-1



ALIGNMENT
BEGIN PROJECT NO. SPI-580-1(4)
"US 395" 722+53.31 P.O.C.
B-1234
"US 395" 773+50.37 P.O.C.
"US 395" 783+03.46 P.O.C.
G-1233, G-1233L, G-1233R
"US 395" 787+64.33 P.O.C.
END PROJECT NO. SPI-580-1(4)

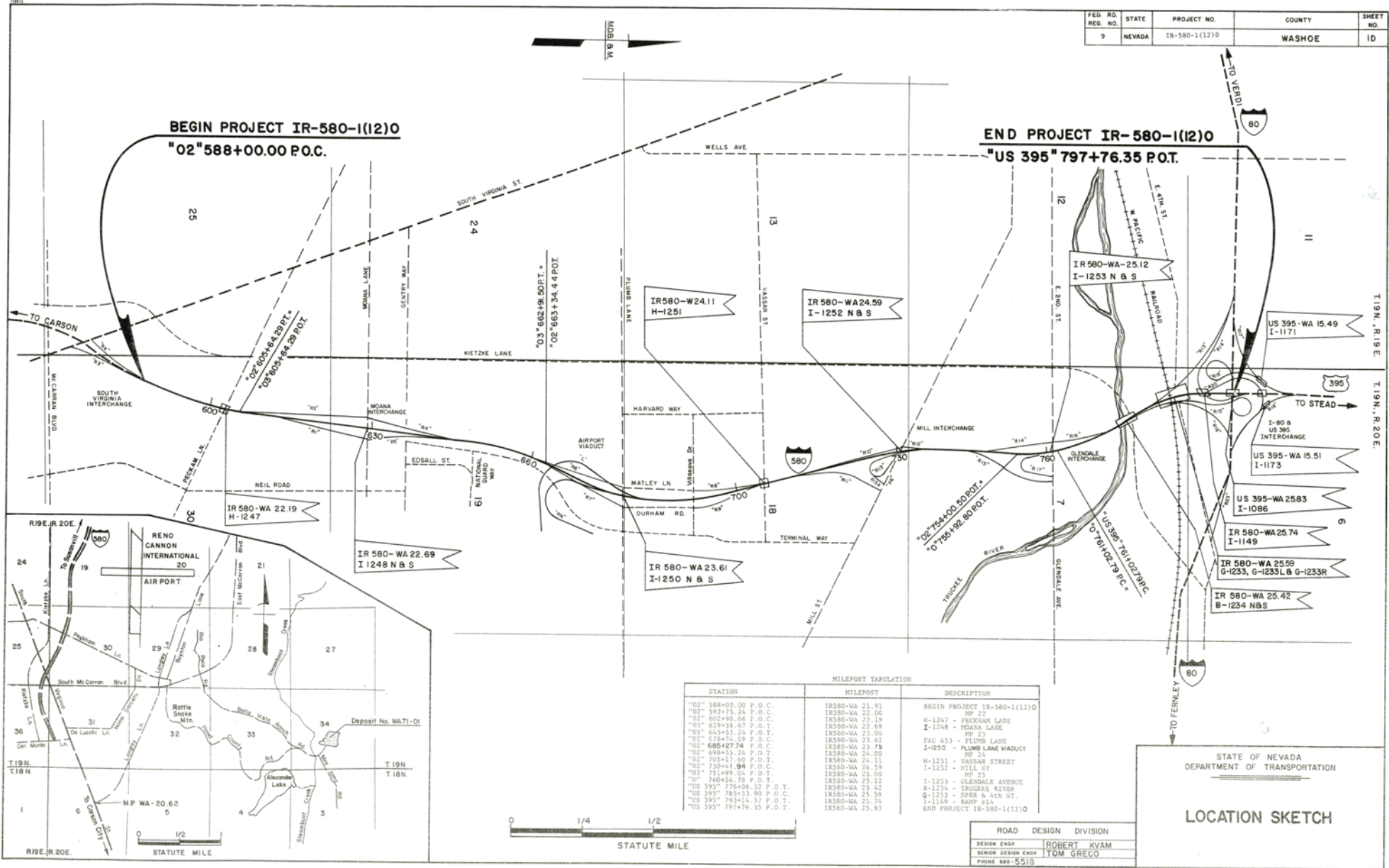
STATION	MILEPOST	DESCRIPTION
"US 395" 773+50.37 P.O.C.	18-580 WA 25.37	BEGIN PROJECT
"US 395" 776+06.32 P.O.C.	18-580 WA 25.42	STRUCTURE B-1234
"US 395" 785+33.90 P.O.C.	18-580 WA 25.59	STRUCTURE G-1233
"US 395" 787+64.32 P.O.C.	18-580 WA 25.63	END PROJECT



CONTRACT NO. 1403 BACK
BEGIN PROJECT NO. SPI-580-1(4)
PROJECT NO. SPI-580-1(4)
SEISMIC RETROFIT & STRUCTURES ON I-580:
B-1234 TRUCKEE RIVER & KIETZE LANE
G-1233 SPRN TRACKS & 4TH STREET
G-1233L RAMP 13 WS
G-1233R RAMP 15 WS
LENGTH OF PROJECT: 0.266
LENGTH OF BRIDGES: 0.181
TOTAL ESTIMATES LENGTH OF ROUTE SECTION TO BE CONTRACTED: 4.192
END PROJECT NO. SPI-580-1(4)
CONTRACT NO. 1459 AHEAD

APPROVED JAN 30 1989
Garth F. Dull, P.E.
DIRECTOR, DEPT. OF TRANSPORTATION

FED. RD. RES. NO.	STATE	PROJECT NO.	COUNTY	SHEET NO.
9	NEVADA	IR-580-1(12)0	WASHOE	ID



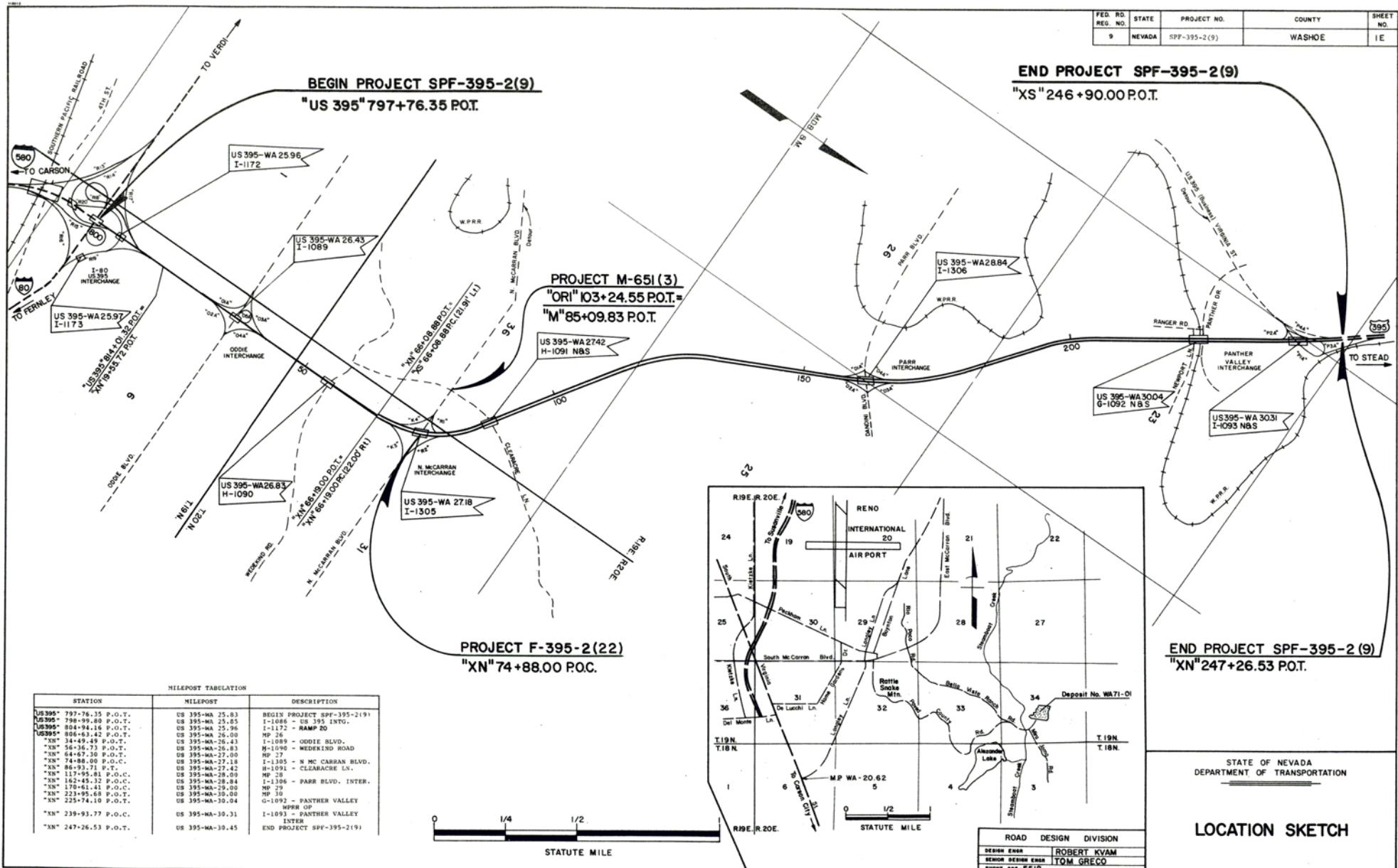
MILEPOST TABULATION		
STATION	MILEPOST	DESCRIPTION
"02" 588+00.00 P.O.C.	IR580-WA 21.91	BEGIN PROJECT IR-580-1(12)0
"02" 592+75.24 P.O.C.	IR580-WA 22.00	MP 22
"02" 602+46.66 P.O.C.	IR580-WA 22.19	H-1247 - PECKERMAN LANE
"03" 629+36.67 P.O.C.	IR580-WA 22.69	I-1248 - MOANA LANE
"03" 643+55.24 P.O.C.	IR580-WA 23.00	MP 23
"03" 678+74.09 P.O.C.	IR580-WA 23.61	PAV 653 - PLUMB LANE VIADUCT
"02" 685+27.74 P.O.C.	IR580-WA 23.75	I-1250 - PLUMB LANE VIADUCT
"02" 698+35.24 P.O.C.	IR580-WA 24.00	MP 24
"02" 703+17.60 P.O.C.	IR580-WA 24.11	H-1251 - VASSAR STREET
"02" 730+41.94 P.O.C.	IR580-WA 24.59	I-1252 - MILL ST
"03" 751+99.04 P.O.T.	IR580-WA 25.00	MP 25
"01" 760+54.78 P.O.T.	IR580-WA 25.12	I-1253 - GLENDALE AVENUE
"02" 395" 764+06.37 P.O.T.	IR580-WA 25.42	B-1234 - TRUCKEE RIVER
"02" 395" 785+13.90 P.O.C.	IR580-WA 25.59	G-1233 - SPIER & 4TH ST.
"02" 395" 793+14.37 P.O.T.	IR580-WA 25.74	I-1149 - RAMP #16
"02" 395" 797+76.35 P.O.T.	IR580-WA 25.83	END PROJECT IR-580-1(12)0

STATE OF NEVADA
DEPARTMENT OF TRANSPORTATION

LOCATION SKETCH

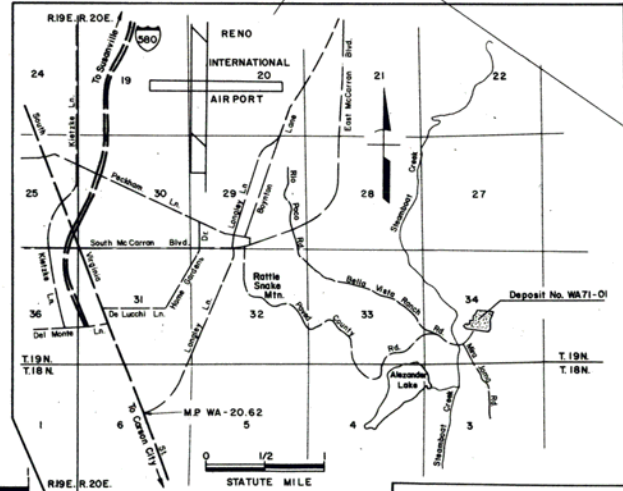
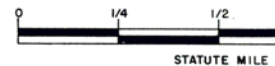
ROAD DESIGN DIVISION
DESIGN ENGR. ROBERT KVAM
SENIOR DESIGN ENGR. TOM GRECO
PHONE 885-5518

FED. RD. RES. NO.	STATE	PROJECT NO.	COUNTY	SHEET NO.
9	NEVADA	SPF-395-2(9)	WASHOE	1 E



MILEPOST TABULATION

STATION	MILEPOST	DESCRIPTION
US 395* 797-76.35 P.O.T.	US 395-WA 25.83	BEGIN PROJECT SPF-395-2(19)
US 395* 798-99.80 P.O.T.	US 395-WA 25.85	I-1085 - US 395 INTG.
US 395* 804-94.16 P.O.T.	US 395-WA 25.96	I-1172 - RAMP 20
US 395* 806-63.42 P.O.T.	US 395-WA 26.00	MP 26
XN 84-49.49 P.O.T.	US 395-WA-26.43	I-1089 - ODDIE BLVD.
XN 86-36.73 P.O.T.	US 395-WA-26.83	H-1090 - WEDERIND ROAD
XN 84-67.30 P.O.T.	US 395-WA-27.00	MP 27
XN 74-88.00 P.O.C.	US 395-WA-27.18	I-1305 - N MC CARRAN BLVD.
XN 86-93.71 P.T.	US 395-WA-27.42	H-1091 - CLEARACRE LN.
XN 117-95.81 P.O.C.	MP 28	
XN 162-45.32 P.O.C.	US 395-WA-28.84	I-1306 - PARR BLVD. INTER.
XN 178-61.41 P.O.C.	US 395-WA-29.00	MP 29
XN 223-95.68 P.O.T.	US 395-WA-30.04	MP 30
XN 225-74.10 P.O.T.		G-1092 - PANTHER VALLEY
XN 239-93.77 P.O.C.	US 395-WA-30.31	ENTER
XN 247-26.53 P.O.T.	US 395-WA-30.45	END PROJECT SPF-395-2(19)



END PROJECT SPF-395-2(9)
"XN" 247+26.53 P.O.T.

STATE OF NEVADA
DEPARTMENT OF TRANSPORTATION

LOCATION SKETCH

ROAD DESIGN DIVISION	
DESIGN ENGR	ROBERT KVAM
SENIOR DESIGN ENGR	TOM GRECO
PHONE 885-5518	