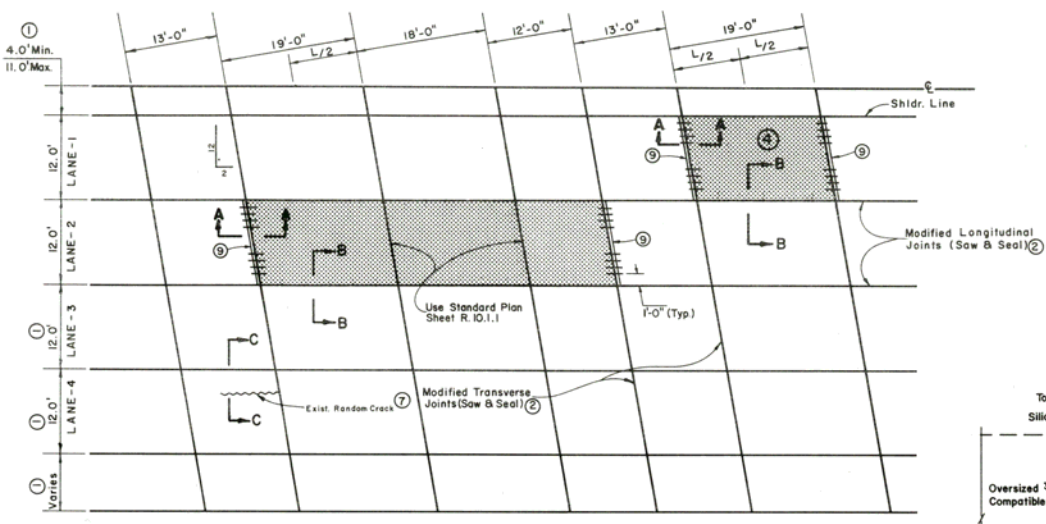


FED. RD. RES. NO.	STATE	PROJECT NO.	COUNTY	SHEET NO.
9	NEVADA	1K-580-1(12)0 SPF-393-2(9)	WASHOE	27

REVISED MARCH 22, 1989

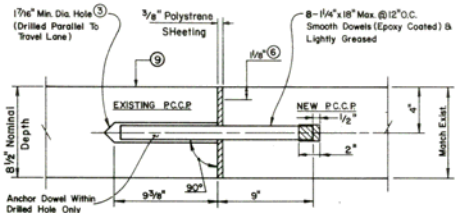
SEE DETAIL "A"

NOTE: Existing Transverse Spacing May Vary

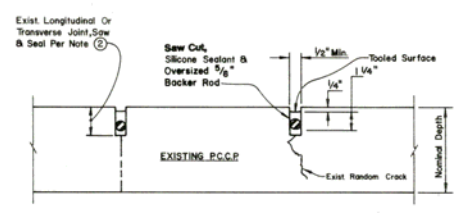


PLAN

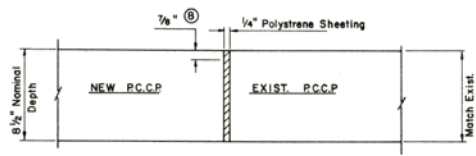
JOINTED CONCRETE PAVEMENT REPLACEMENT



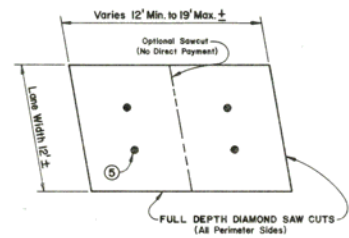
SECTION A-A  
TRANSVERSE WORKING JOINT DETAIL



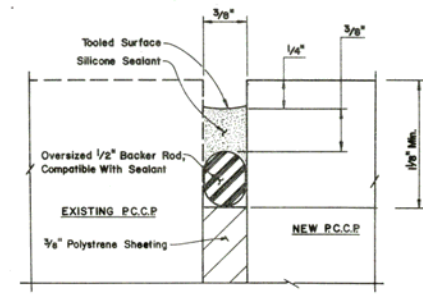
SECTION C-C  
RANDOM CRACK REPAIRS



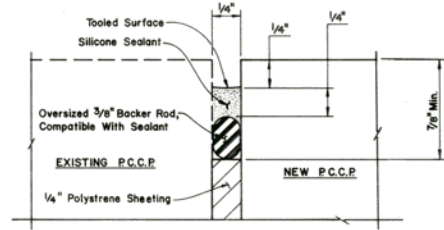
SECTION B-B  
LONGITUDINAL JOINT DETAIL



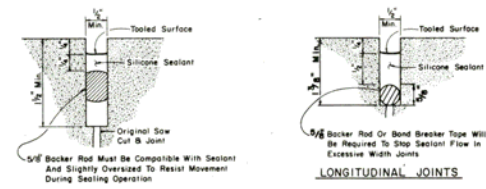
DETAIL "A"  
REPLACEMENT SLAB  
(SLAB REMOVAL BY LIFTOUT METHOD ONLY)



DETAIL "B"  
REPLACEMENT TRANSVERSE JOINT



DETAIL "C"  
REPLACEMENT LONGITUDINAL JOINT



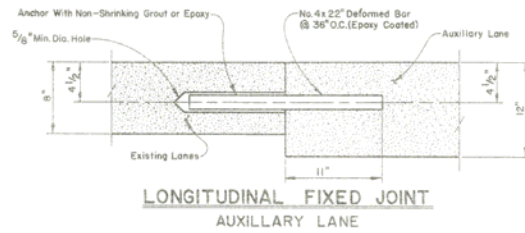
DETAIL "D"  
RESEALING EXIST. CONC. PAVEMENT JOINTS

- NOTES:
- SEE TYPICAL SECTIONS
  - USE RESEALING EXISTING CONCRETE PAVEMENT JOINTS DETAIL "D"
  - MULTIPLE PRESET DRILL HEADS POINTED ON RIGID FRAME WITH PNEUMATIC OR HYDRAULIC DRILL RIG MANDATORY (MINIMUM BITS: 2 LONGITUDINAL, 3 TRANSVERSE)
  - SLAB REMOVALS (SEE STRUCTURE LIST)
  - DRILLED LIFT-OUT HOLES (DIAMETER, SIZE AND SPACING DETERMINED BY CONTRACTOR)
  - USE REPLACEMENT TRANSVERSE JOINT (SEE DETAIL "B")
  - SAWCUT LOCATIONS TO BE DETERMINED BY RESIDENT ENGINEER. (INVENTORY PROVIDED BY DESIGNER) SEE SECTION C-C.
  - USE REPLACEMENT LONGITUDINAL JOINT (SEE DETAIL "C")
  - OFFSET FULL DEPTH DIAMOND SAWCUT FROM EXISTING TRANSVERSE JOINT AS REQUIRED BY ENGINEER TO PROVIDE SOUND CONCRETE FOR DOWELING. THEN USE SECTION A-A.

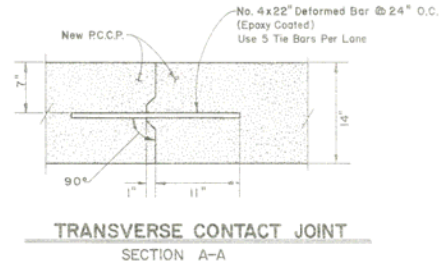
CO#1  
NOTE #3  
MINIMUM 4 BITS

STATE OF NEVADA  
DEPARTMENT OF TRANSPORTATION  
**SPECIAL DETAIL**  
**P.C.C.P.**  
**REPLACEMENT/REPAIR**

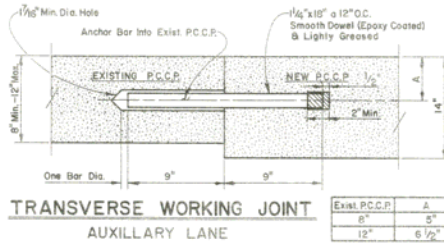
FED. RD. RES. NO.	STATE	PROJECT NO.	COUNTY	SHEET NO.
9	NEVADA	1R-560-1(12)0 SPF-393-2(9)	WASHOE	28



**LONGITUDINAL FIXED JOINT**  
AUXILLARY LANE



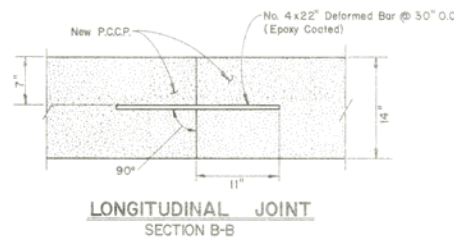
**TRANSVERSE CONTACT JOINT**  
SECTION A-A



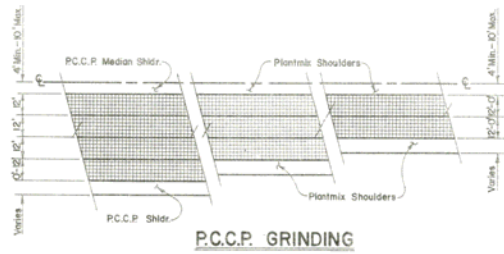
**TRANSVERSE WORKING JOINT**  
AUXILLARY LANE

EXIST. P.C.C.P.	A
8"	5"
12"	6 1/2"

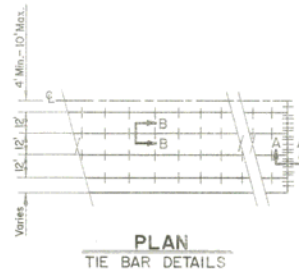
- POLYVINYL CAP
- LIMITS OF GRINDING



**LONGITUDINAL JOINT**  
SECTION B-B



**P.C.C.P. GRINDING**



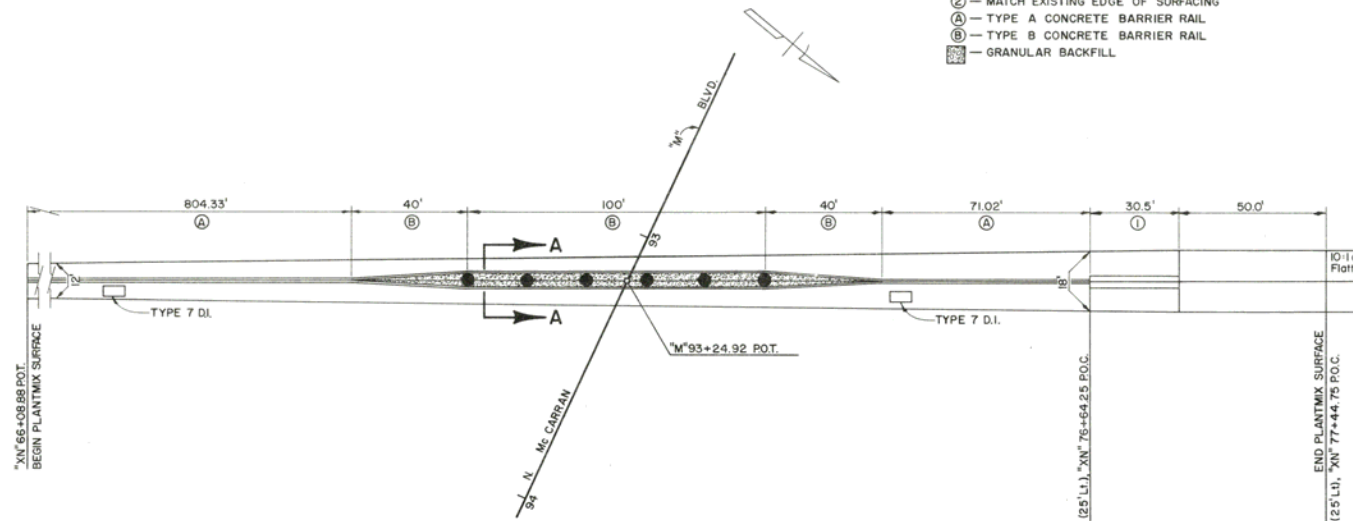
**PLAN**  
TIE BAR DETAILS

STATE OF NEVADA  
DEPARTMENT OF TRANSPORTATION

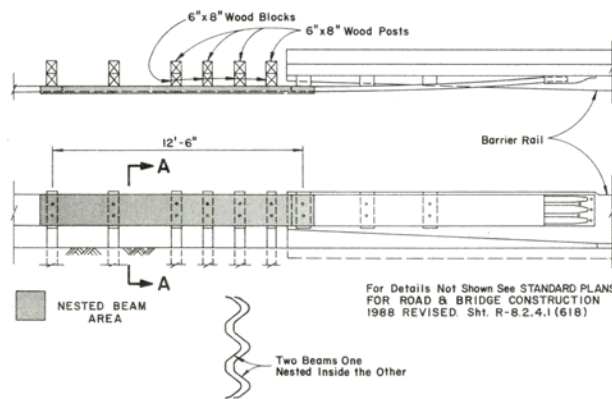
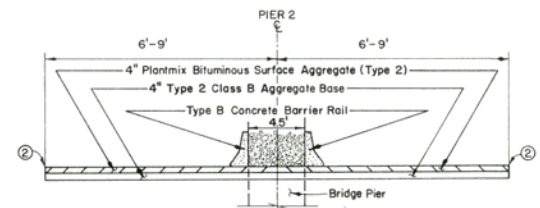
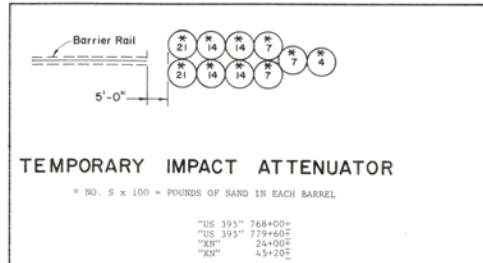
**SPECIAL DETAIL**  
**P.C.C.P.**  
**RECONSTRUCTION/GRINDING**

FED. RD. REG. NO.	STATE	PROJECT NO.	COUNTY	SHEET NO.
9	NEVADA	SPF-395-2(9) IR-980-1(L)R10	WASHOE	29

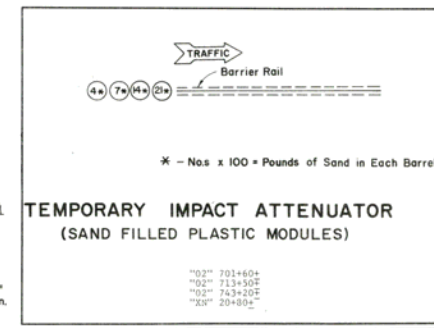
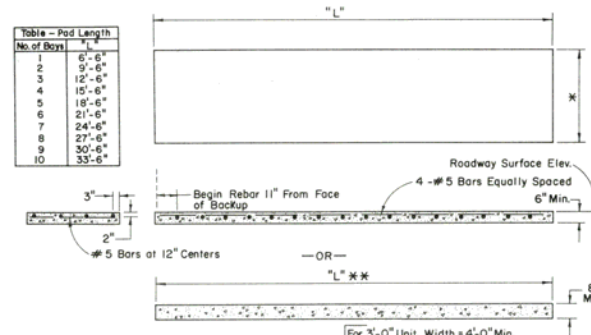
- ① - 9 BAY G.R.E.A.T. IMPACT ATTENUATOR WITH CONCRETE PAD.
- ② - MATCH EXISTING EDGE OF SURFACING
- (A) - TYPE A CONCRETE BARRIER RAIL
- (B) - TYPE B CONCRETE BARRIER RAIL
- - GRANULAR BACKFILL



PLAN



No. of Bays	L
1	6'-6"
2	9'-6"
3	12'-6"
4	15'-6"
5	18'-6"
6	21'-6"
7	24'-6"
8	27'-6"
9	30'-6"
10	33'-6"



STATE OF NEVADA  
 DEPARTMENT OF TRANSPORTATION

**SPECIAL DETAILS**