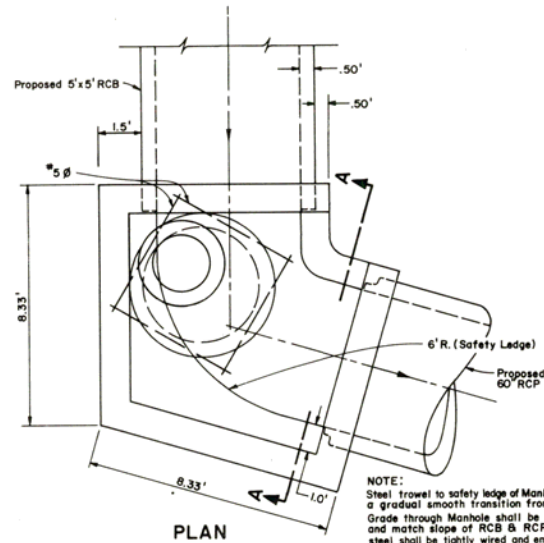
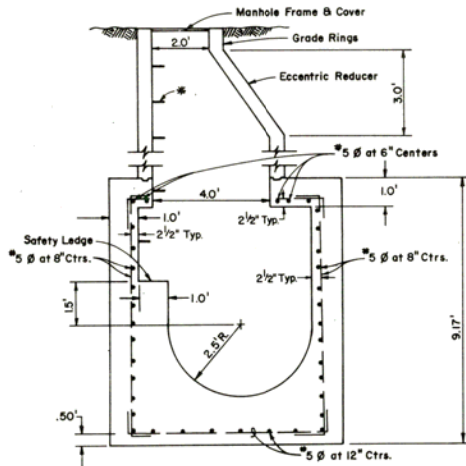


FED. RD. DIST. NO.	STATE	PROJECT NO.	COUNTY	SHEET NO.
1	NEVADA	1-580-1(5)	WASHOE	20

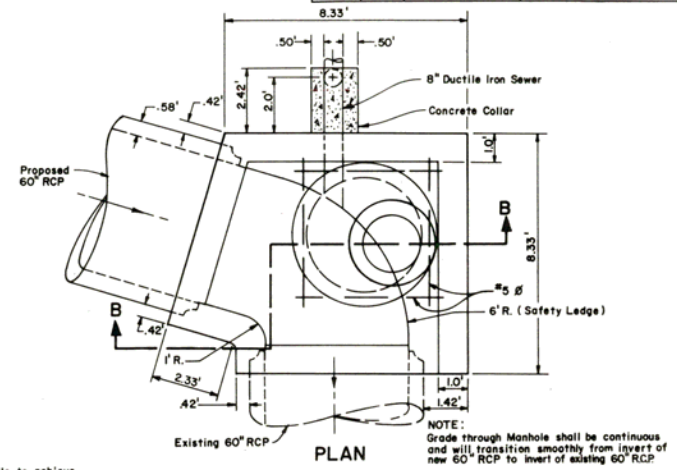


NOTE:
Steel trowel to safety ledge of Manhole to achieve a gradual smooth transition from RCB to RCP. Grade through Manhole shall be continuous and match slope of RCB & RCP. All reinforcing steel shall be tightly wired and embedded 1/2" min. clear of all concrete surfaces.

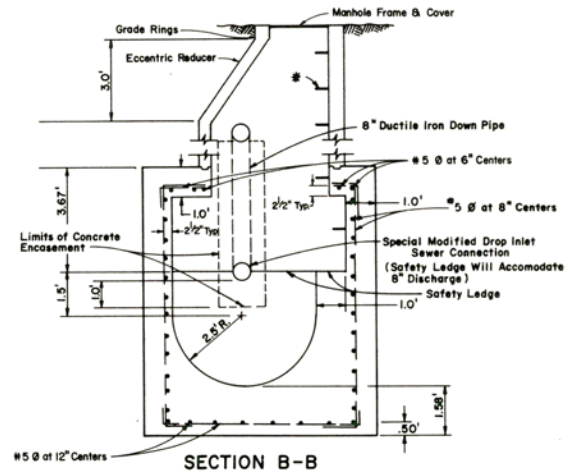
* Steps shall be installed in manholes at 1.33' max. intervals.



SPECIAL MANHOLE
(126' RT.) STA. "03" 619+57.2



NOTE:
Grade through Manhole shall be continuous and will transition smoothly from invert of new 60" RCP to invert of existing 60" RCP

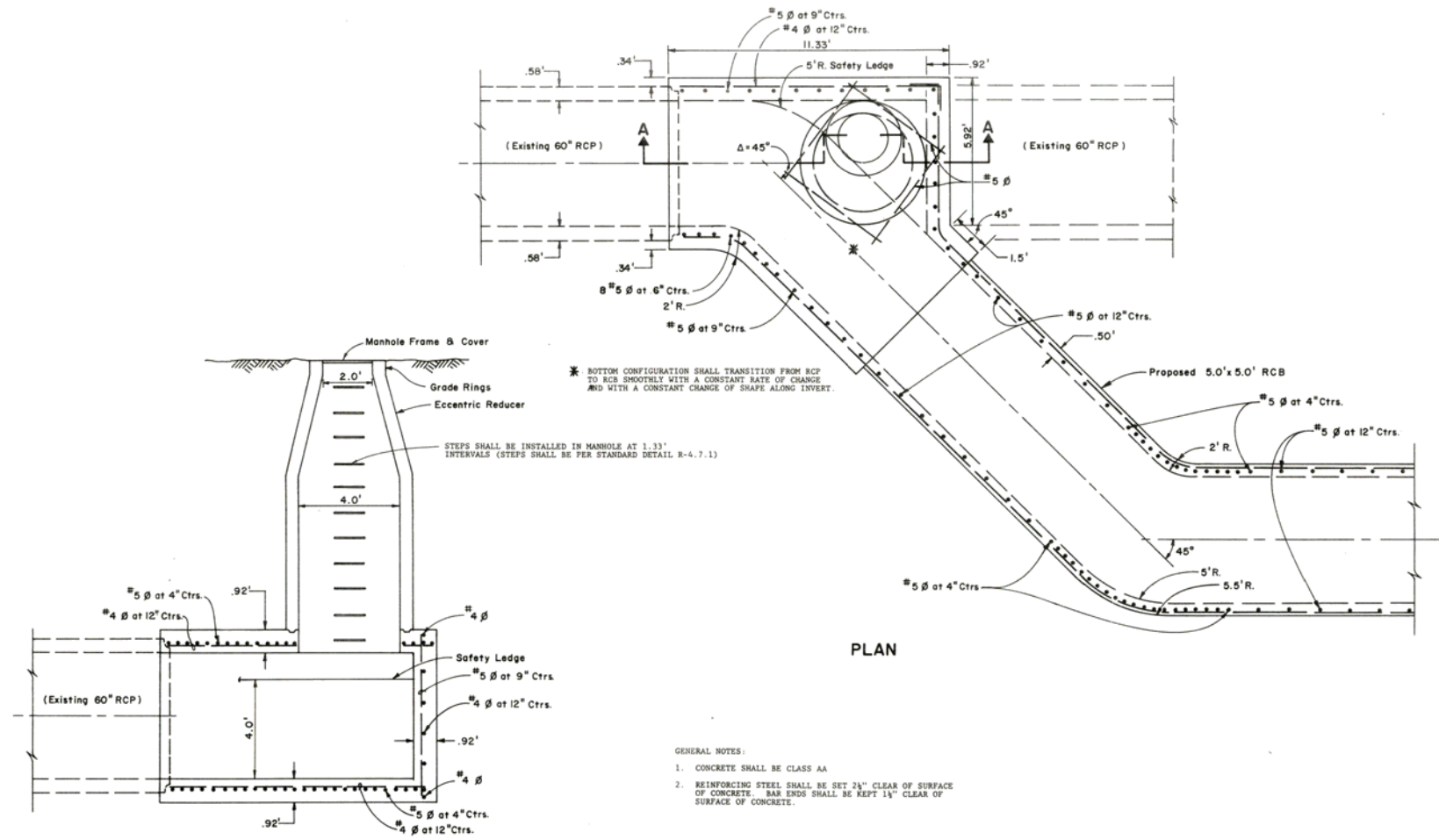


SPECIAL MANHOLE (TO EXISTING SYSTEM)

(200' RT.) STA. "03" 623+69.2

STATE OF NEVADA
DEPARTMENT OF HIGHWAYS
SPECIAL DETAILS

FED. RD. REG. NO.	STATE	PROJECT NO.	COUNTY	SHEET NO.
9	NEVADA	1-580-1(5)1	WASHOE	20A



- GENERAL NOTES:
1. CONCRETE SHALL BE CLASS AA
 2. REINFORCING STEEL SHALL BE SET 2 1/2" CLEAR OF SURFACE OF CONCRETE. BAR ENDS SHALL BE KEPT 1 1/2" CLEAR OF SURFACE OF CONCRETE.

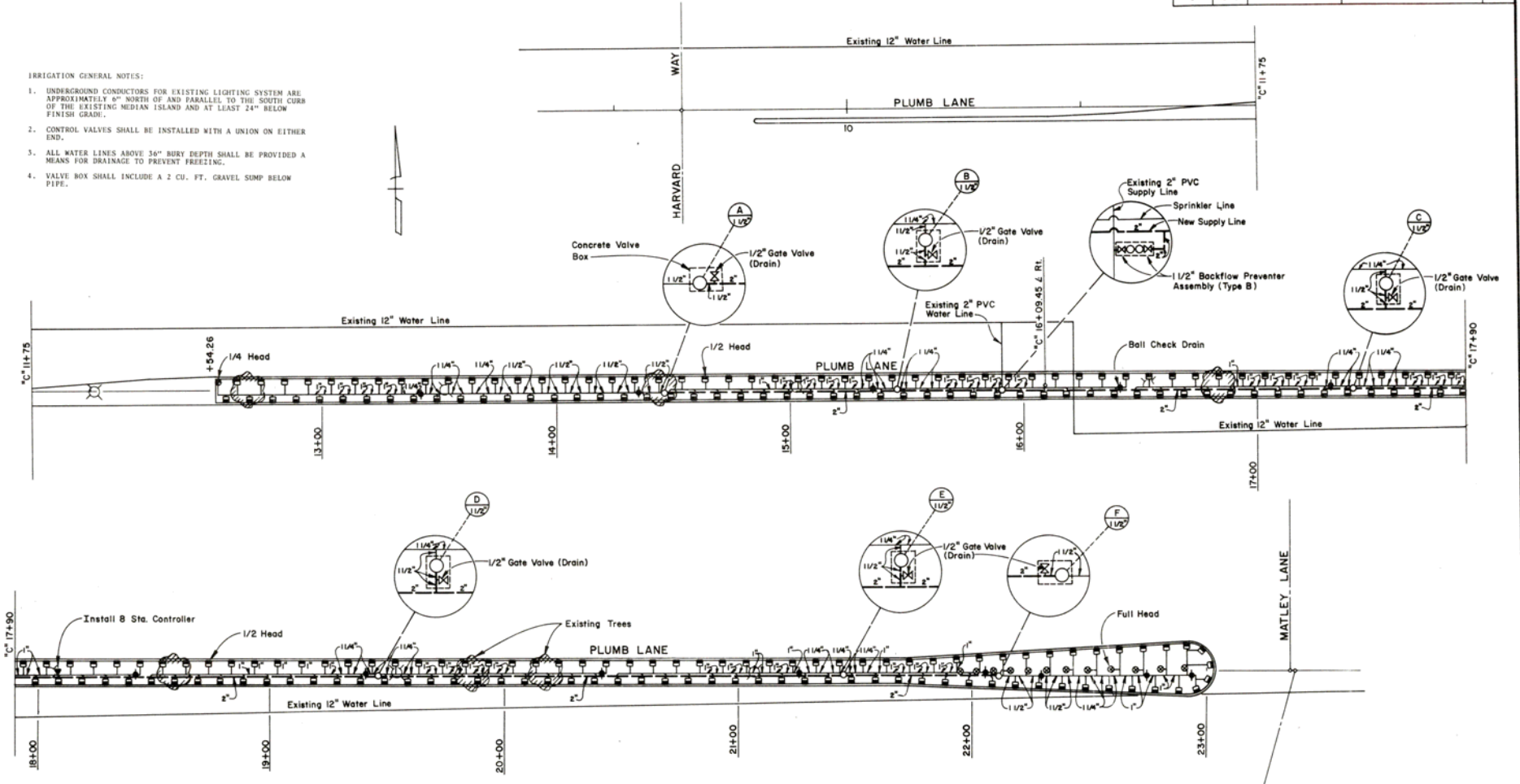
SPECIAL TRANSITION MANHOLE
 (126' Lt. STA. 09+37 ±)

STATE OF NEVADA
 DEPARTMENT OF HIGHWAYS
SPECIAL DETAILS

FED. RD. DIST. NO.	STATE	PROJECT NO.	COUNTY	SHEET NO.
5	NEVADA	1-580-1(5)1	WASHOE	21

IRRIGATION GENERAL NOTES:

1. UNDERGROUND CONDUCTORS FOR EXISTING LIGHTING SYSTEM ARE APPROXIMATELY 6" NORTH OF AND PARALLEL TO THE SOUTH CURB OF THE EXISTING MEDIAN ISLAND AND AT LEAST 24" BELOW FINISH GRADE.
2. CONTROL VALVES SHALL BE INSTALLED WITH A UNION ON EITHER END.
3. ALL WATER LINES ABOVE 36" BURY DEPTH SHALL BE PROVIDED A MEANS FOR DRAINAGE TO PREVENT FREEZING.
4. VALVE BOX SHALL INCLUDE A 2 CU. FT. GRAVEL SUMP BELOW PIPE.

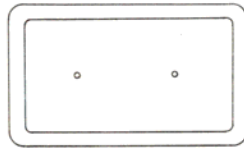


Note: Pipe sizes not shown shall be 3/4"

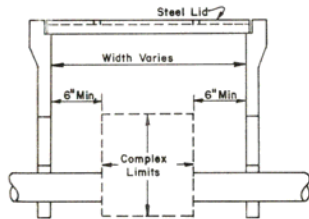
STATE OF NEVADA
DEPARTMENT OF HIGHWAYS

IRRIGATION PLAN

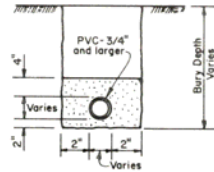
FED. RD. DIST. NO.	STATE	PROJECT NO.	COUNTY	SHEET NO.
8	NEVADA	I-580-1(5)1	WASHOE	22



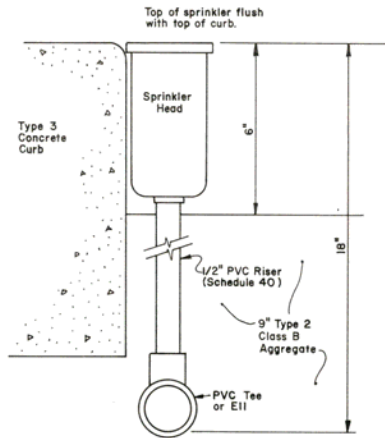
TOP VIEW



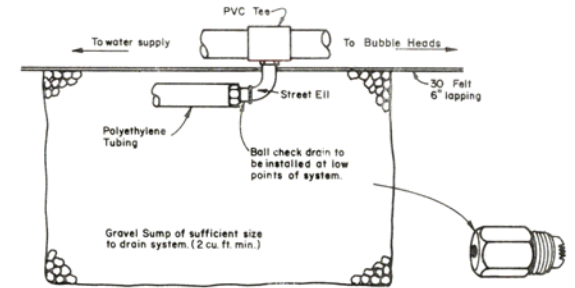
SECTION
CONCRETE VALVE BOX



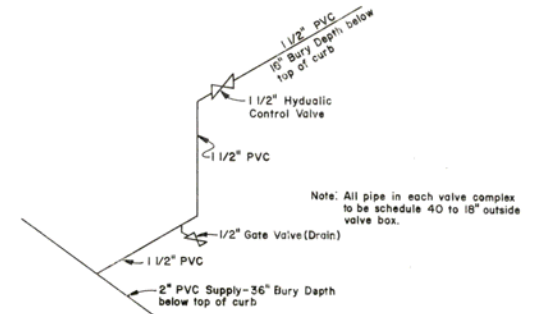
SECTION
SAND BEDDING
FOR PVC PIPE



ELEVATION
SPRINKLER INSTALLATION



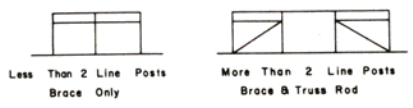
SECTION
BALL CHECK DRAIN & SUMP DETAILS



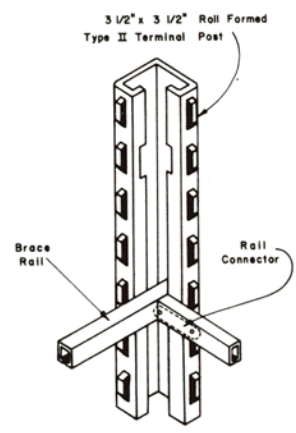
SCHEMATIC
VALVE COMPLEX

STATE OF NEVADA
DEPARTMENT OF HIGHWAYS
SPECIAL DETAILS

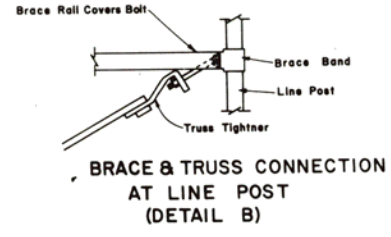
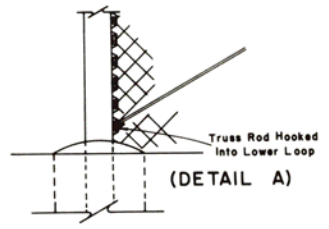
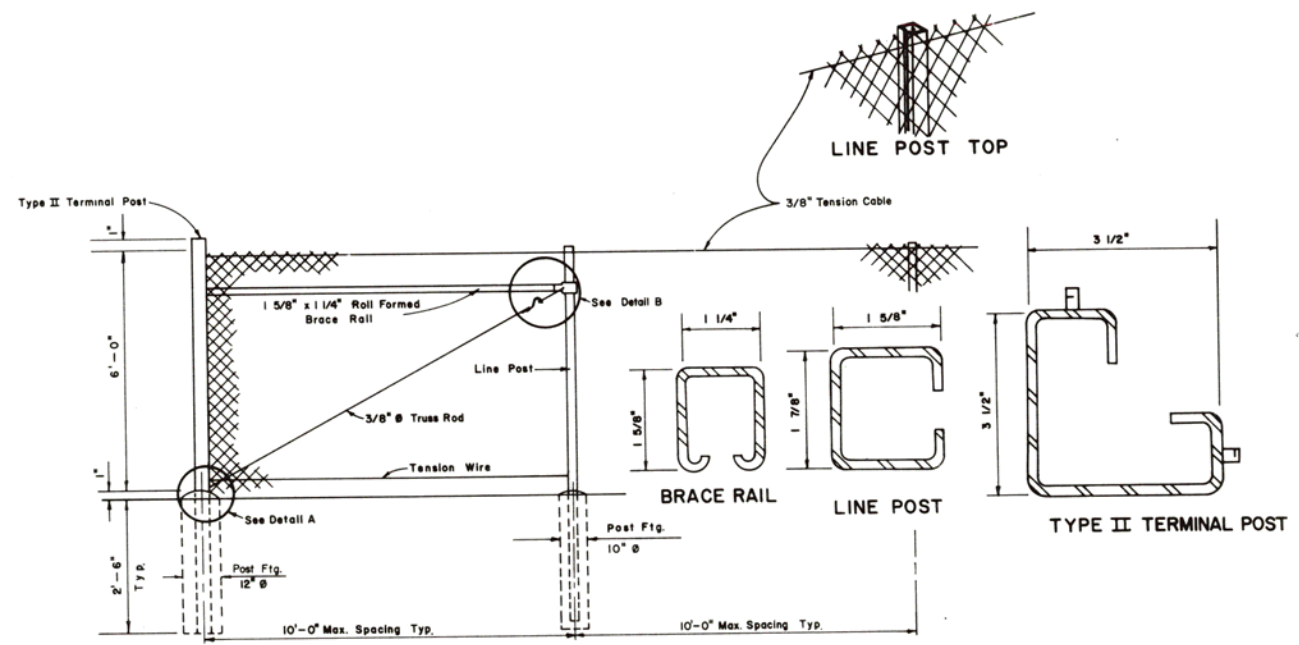
FED. RD. DIST. NO.	STATE	PROJECT NO.	COUNTY	SHEET NO.
9	NEVADA	I-580-1(5)1	WASHOE	23



BRACING ARRANGEMENT



RAIL CONNECTION AT CORNER POST



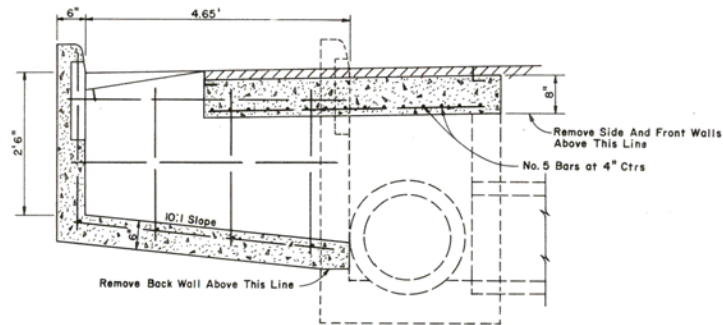
- GENERAL NOTES**
- FENCE POSTS AND MATERIALS SHALL CONFORM TO THE REQUIREMENTS OF STANDARD SPECIFICATIONS AND SUPPLEMENTS.
 - CHAIN LINK FENCING SHALL CONSIST OF GALVANIZED CHAIN LINK FABRIC ON STEEL POSTS (H-COLLING, TUBULAR OR C-COLLING).
 - (A) ALL POSTS SHALL BE SET IN CLASS A OR AA CONCRETE.
 (B) BRACES SHALL BE SPACED APPROXIMATELY 12" BELOW TOP OF TERMINAL POSTS AND SHALL EXTEND FROM END, GATE OR CORNER POSTS TO FIRST ADJACENT LINE POST.
 (C) ALL FITTINGS SHALL BE HOT DIPPED GALVANIZED MALLEABLE, CAST IRON, OR PRESSED STEEL.
 (D) FABRIC SHALL BE FASTENED TO LINE POSTS WITH FABRIC BANDS SPACED APPROXIMATELY 14" APART, AND TO TOP TENSION CABLE AND BOTTOM TENSION WIRE WITH HOOP RINGS OR TIE WIRES SPACED APPROXIMATELY 24" APART.
 (E) FOR TUBULAR POST AND BRACERAIL DETAILS, SEE SHEET NO. R-6.1.1.

STATE OF NEVADA
DEPARTMENT OF HIGHWAYS

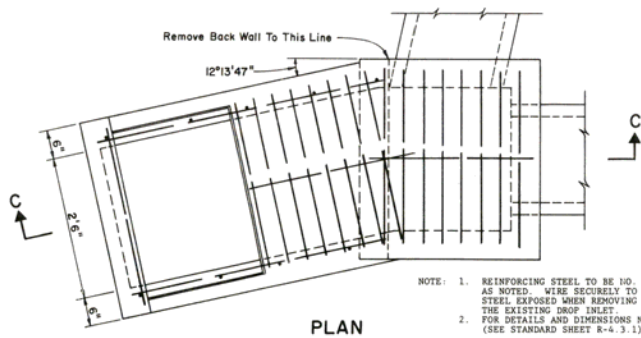
SPECIAL DETAILS
C-TYPE FENCE POST
(ALTERNATE)

R-6.3.6(16)	REVISION
CHIEF ROAD DESIGN ENGR.	ADOPTED

FED. RD. DIST. NO.	STATE	PROJECT NO.	COUNTY	SHEET NO.
8	NEVADA	1-580-1(5)1	WASHOE	24



SECTION C-C

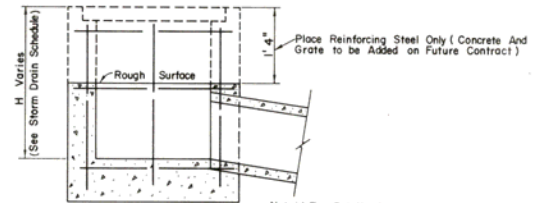


PLAN

METHOD OF MODIFYING EXISTING TYPE 3 DROP INLET

42' Lt. OF Sta. "C" 29+64.80

- NOTE: 1. REINFORCING STEEL TO BE NO. 4 BARS EXCEPT AS NOTED. WIRE SECURELY TO REINFORCING STEEL EXPOSED WHEN REMOVING PORTIONS OF THE EXISTING DROP INLET.
 2. FOR DETAILS AND DIMENSIONS NOT SHOWN, (SEE STANDARD SHEET R-4.3.1.)



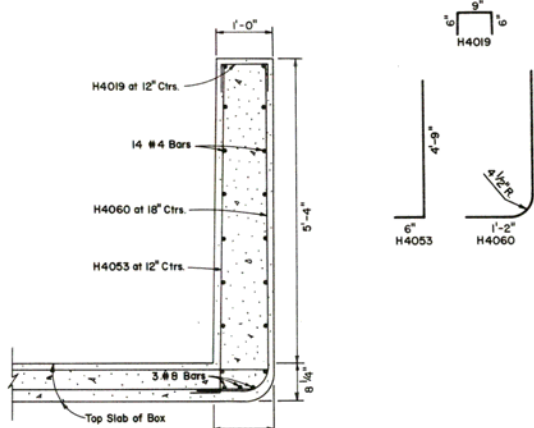
SECTION
PARTIAL TYPE 2 DROP INLET

- Note: 1. For Details And Dimensions Not Shown, (See Standard Sheet R-4.2.1.)
 2. See Storm Drain Schedule For Locations

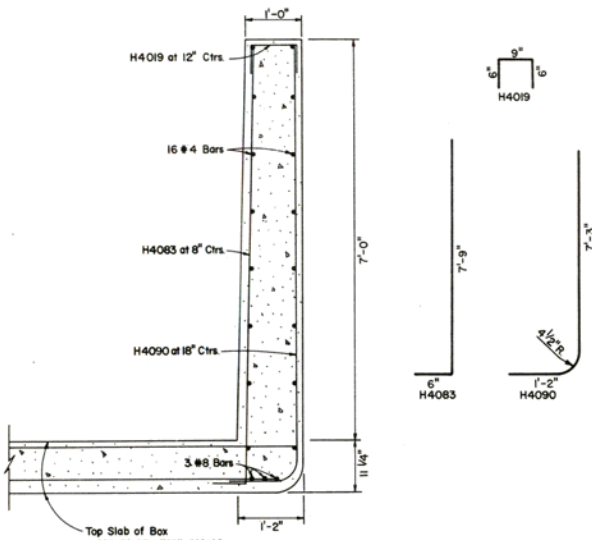
STATE OF NEVADA
DEPARTMENT OF HIGHWAYS

SPECIAL DETAILS

FED. RD. DIST. NO.	STATE	PROJECT NO.	COUNTY	SHEET NO.
8	NEVADA	I-580-1(5)1	WASHOE	25

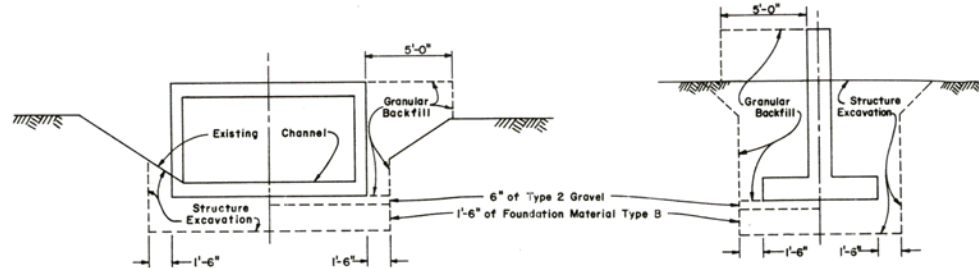


114.75' LT. "03" 659+40
 USE TYPE II HEADWALL (8'-9") FOR WINGWALLS AND FOOTINGS
 (SEE STANDARD SHEET B-20.1.6)



114.5' LT. "03" 662+18
 USE TYPE II HEADWALL (8'-10") FOR WINGWALLS AND FOOTINGS
 (SEE STANDARD SHEET B-23.1.6)

MODIFIED TYPE II HEADWALLS

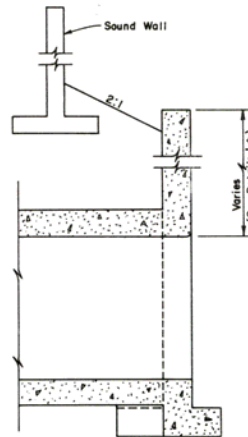


RCB HALF SECTIONS

HEADWALL HALF SECTIONS

METHOD OF MEASURING STRUCTURE EXCAVATION AND EMBANKMENT

LT. STA. "03" 649+651
 LT. STA. "03" 659+501
 LT. STA. "03" 662+152
 STA. "03" 657+04.00
 STA. "03" 653+40.00

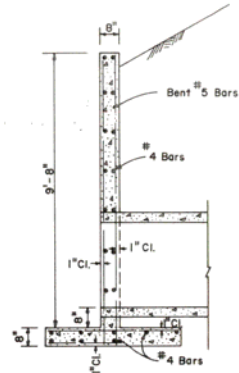


LONGITUDINAL SECTION AT INLET OF RCB

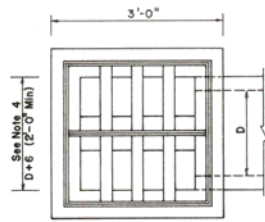
STATE OF NEVADA
 DEPARTMENT OF HIGHWAYS

SPECIAL DETAILS

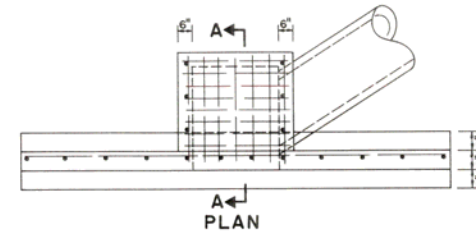
FED. RD. REG. NO.	STATE	PROJECT NO.	COUNTY	SHEET NO.
9	NEVADA	I-580-1(5)1	WASHOE	26



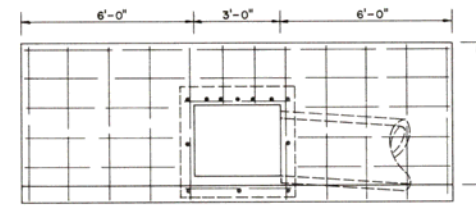
SECTION A-A



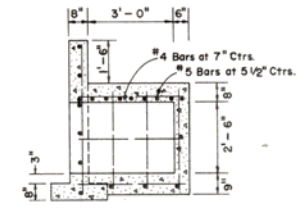
PLAN
MODIFIED TYPE 2A DROP INLET



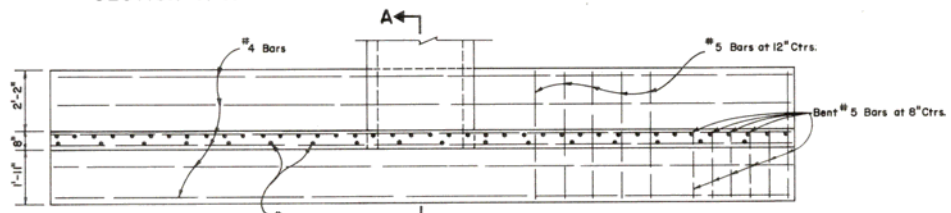
PLAN



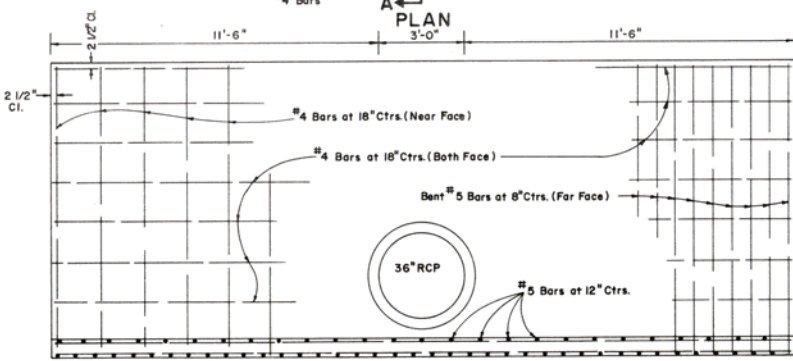
ELEVATION



SECTION A-A



PLAN



ELEVATION

SPECIAL HEADWALL
114' Lt. Sta. 03 649+65

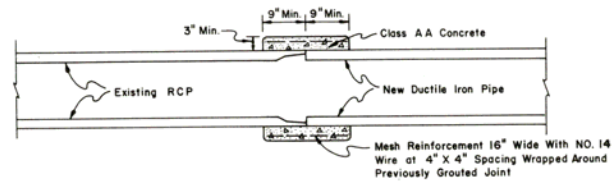
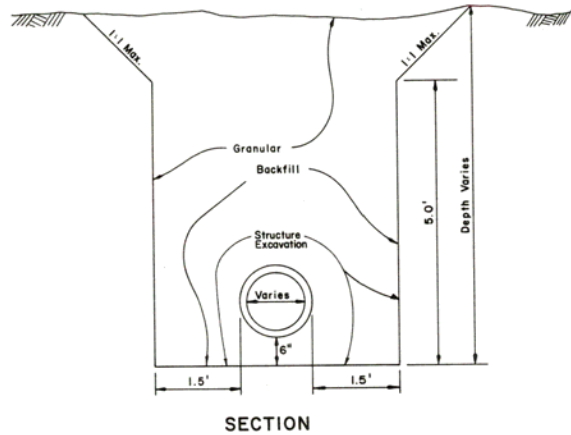
SPECIAL INLET
115.5' Lt. Sta. 03 662+80

- NOTE:
1. ALL CONCRETE SHALL BE CLASS AA.
 2. ALL REINFORCING STEEL SHALL BE #4 BARS WITH A MAXIMUM SPACING OF 18" EXCEPT AS NOTED. BARS TO BE EMBEDDED A MINIMUM OF 2 1/2" AND BAR ENDS MUST CLEAR CONCRETE SURFACE BY 1 1/2".
 3. H OF TYPE MODIFIED 2A DROP INLET VARIES (SEE STORM DRAIN SCHEDULE).
 4. WHEN PIPE INTERSECTS MODIFIED TYPE 2A DROP INLET ON A 12" OR LARGER SKEW, INCREASE THIS DIMENSION TO $(D+4") \times \cos \theta$. INCREASE SIZE OF GRATE ACCORDINGLY.
 5. FOR DETAILS OF MODIFIED TYPE 2A DROP INLET NOT SHOWN, SEE STANDARD SHEET R-4.2.2.

STATE OF NEVADA
DEPARTMENT OF HIGHWAYS

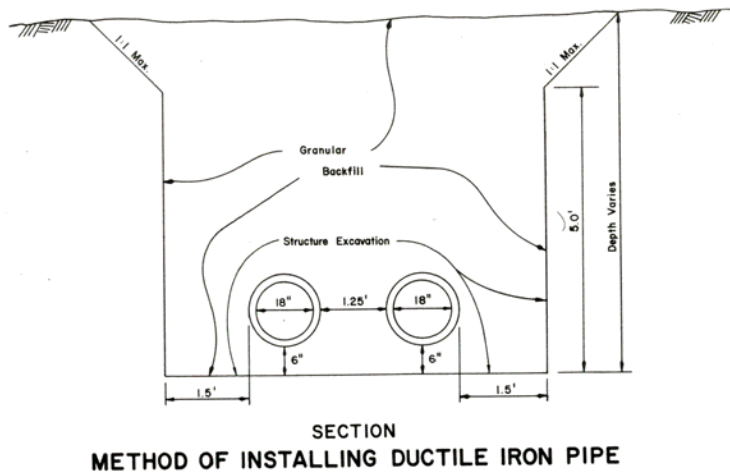
SPECIAL DETAILS

FED. RD. DIST. NO.	STATE	PROJECT NO.	COUNTY	SHEET NO.
#	NEVADA	I-580-(15)	WASHOE	27



CONCRETE COLLAR

RT. STA. "03" 649 + 80"
 RT. STA. "03" 651 + 39"



STATE OF NEVADA
 DEPARTMENT OF HIGHWAYS

SPECIAL DETAILS